



## Strickland River Tract

The Strickland River Tract is the ideal wooded waterfront property on the Ogeechee River. This 432± acres is the perfect spot to enjoy the peace and serenity of the open outdoors while having access to multiple lakes, as well as frontage along the Ogeechee River. You can enjoy fishing, hunting, boating, swimming, kayaking, and more! This place would be a great investment or recreational tract for any buyer. The property features 78± acres of lakes and ponds much of which are surrounded by upland areas perfect for possible building sites. The remainder of the property consists of natural woodland hills and flats. Approximately 249± acres are low lying along the Ogeechee River. Strickland River tract is an ideal weekend get-a-way, hunting retreat, lake/river property or a unique place to build your own private Lakefront Home. Located 30 miles from Savannah, GA on Old River Rd and Interstate-16. This property is easily accessible from Savannah, Atlanta, Carolina or Florida. Call Jason Williams today for more details or to set up a showing! 912.764.LAND(5263)



**Price:** \$875,000

**Property Type:** Land

**Status:** Sold

**Street/Address:** Old River Rd.

**City:** Bloomingdale

**State:** Georgia

**Zip code:** 31302

**County:** effingham

**Acreage:** 432

**Per Acre Price:** \$0.00

**Phone Number:**

**Email:** [info@LandandRivers.com](mailto:info@LandandRivers.com)

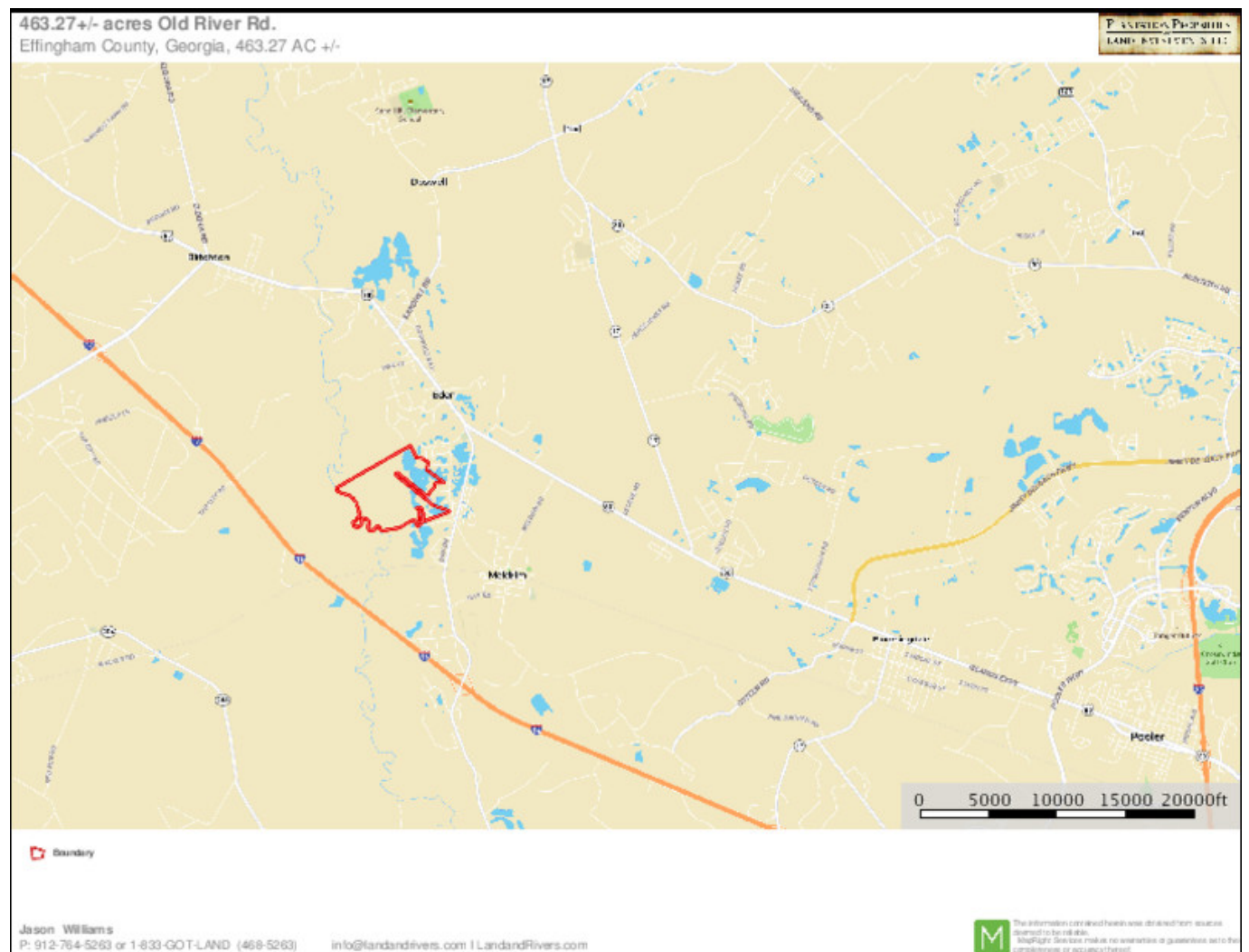
# Strickland River Tract

Published on Plantation Properties & Land Investments, LLC (<https://www.landandrivers.com>)

Google Maps link: [View Larger Map](#)



## Location map

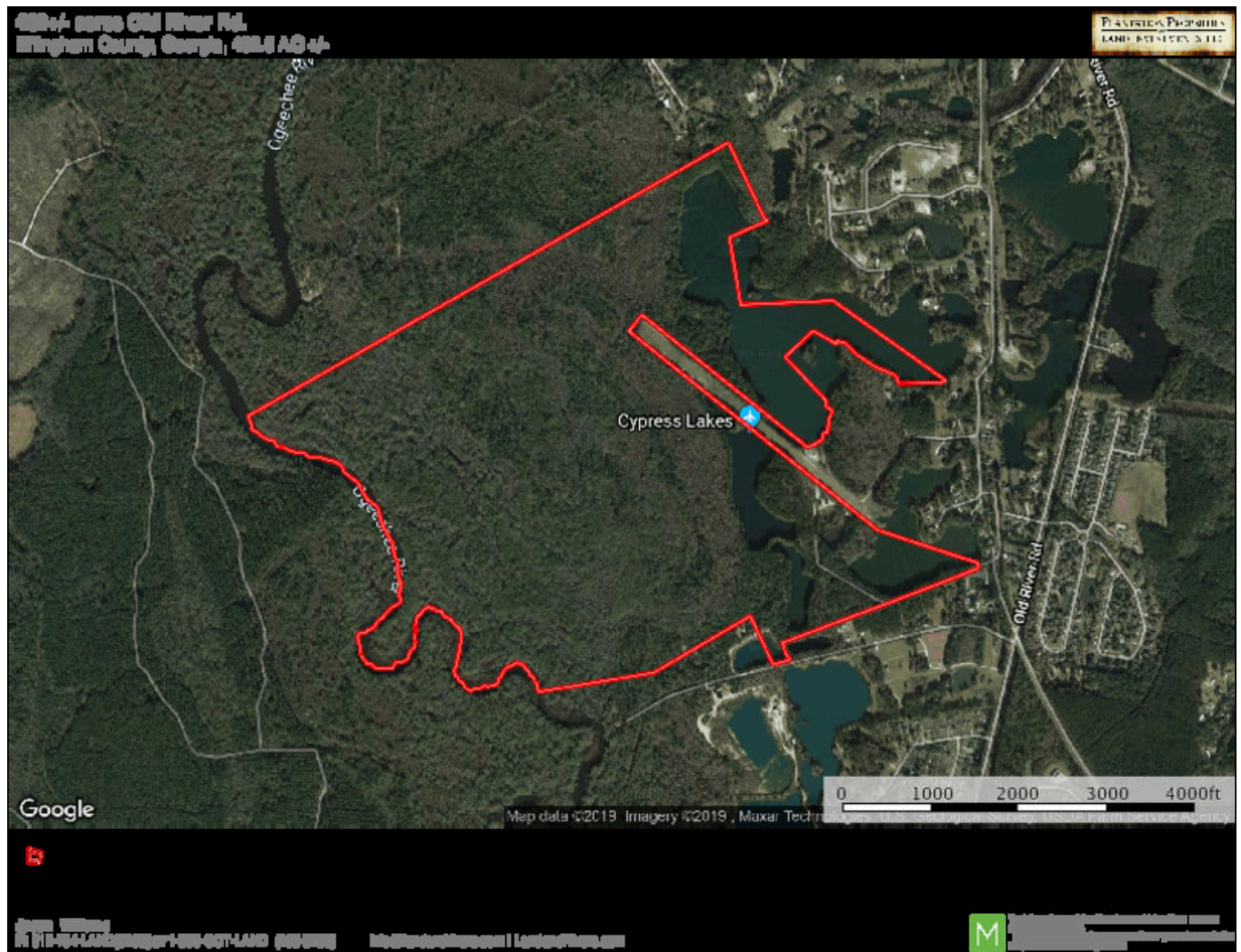




## Strickland River Tract

Published on Plantation Properties & Land Investments, LLC (<https://www.landanddrivers.com>)

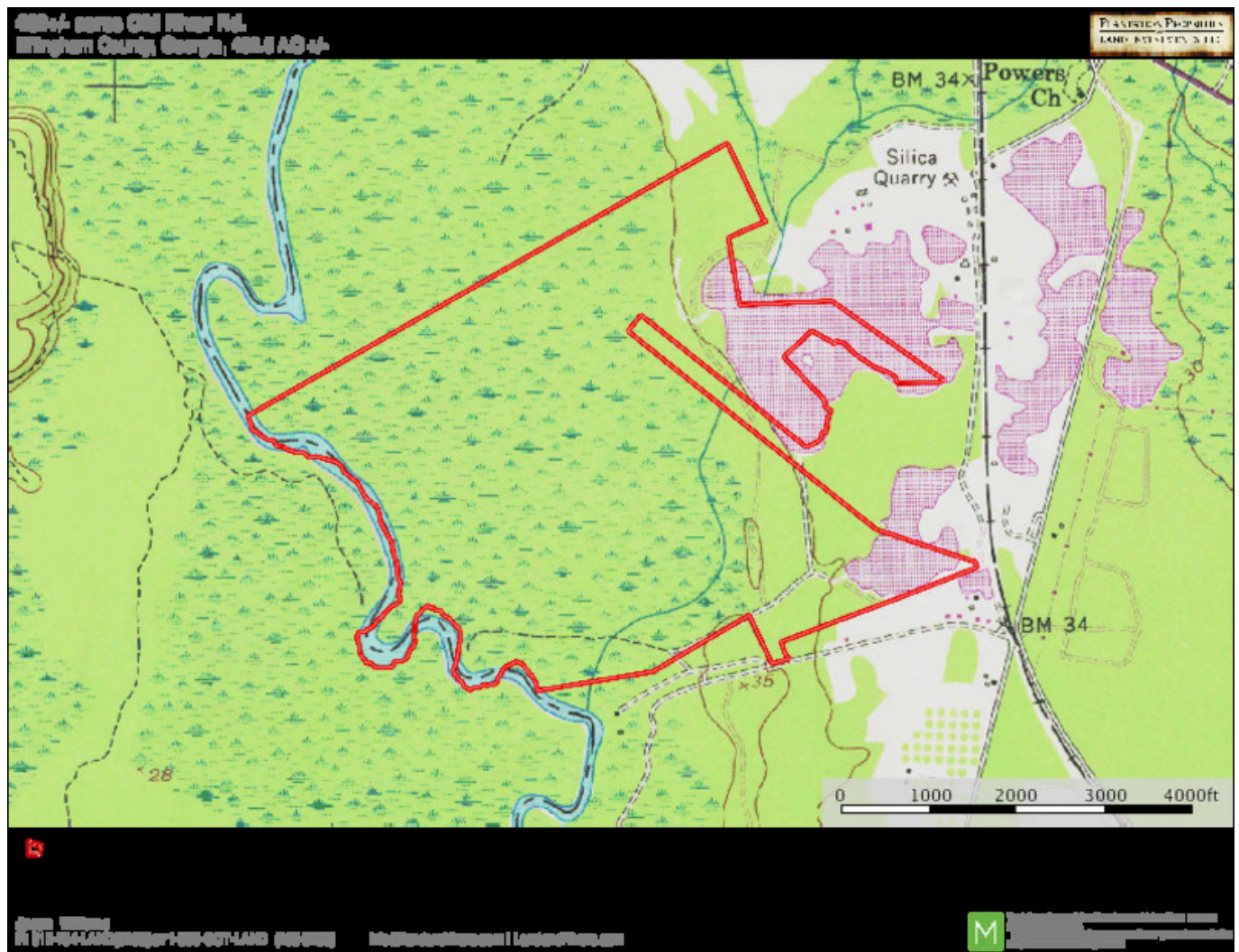
### Aerial map



### Topo Map

## Strickland River Tract

Published on Plantation Properties & Land Investments, LLC (<https://www.landandrivers.com>)



Source URL: <https://www.landandrivers.com/property/strickland-river-tract>