

Westside Farm Tract 2

Published on Plantation Properties & Land Investments, LLC (<https://www.landanddrivers.com>)



Westside Farm Tract 2

PRICE REDUCED!!!! Westside Farm Tract 2 is 28± acres with paved road frontage on Metter Rd. in Bulloch County. It includes 6± acres of planted pines. It would be the perfect recreational retreat, hunting property, future home site, or investment opportunity. See map for additional tracts also available. Enjoy hunting and more on your own property! Call Jason Williams today to see this property! 912.764.LAND(5263)



Price: \$117,600

Property Type: Land

Status: Sold

Street/Address: Metter Rd.

City: Statesboro

State: Georgia

Zip code: 30458

County: bulloch

Acreage: 28

Per Acre Price: \$4,200.00

Phone Number:

Email:

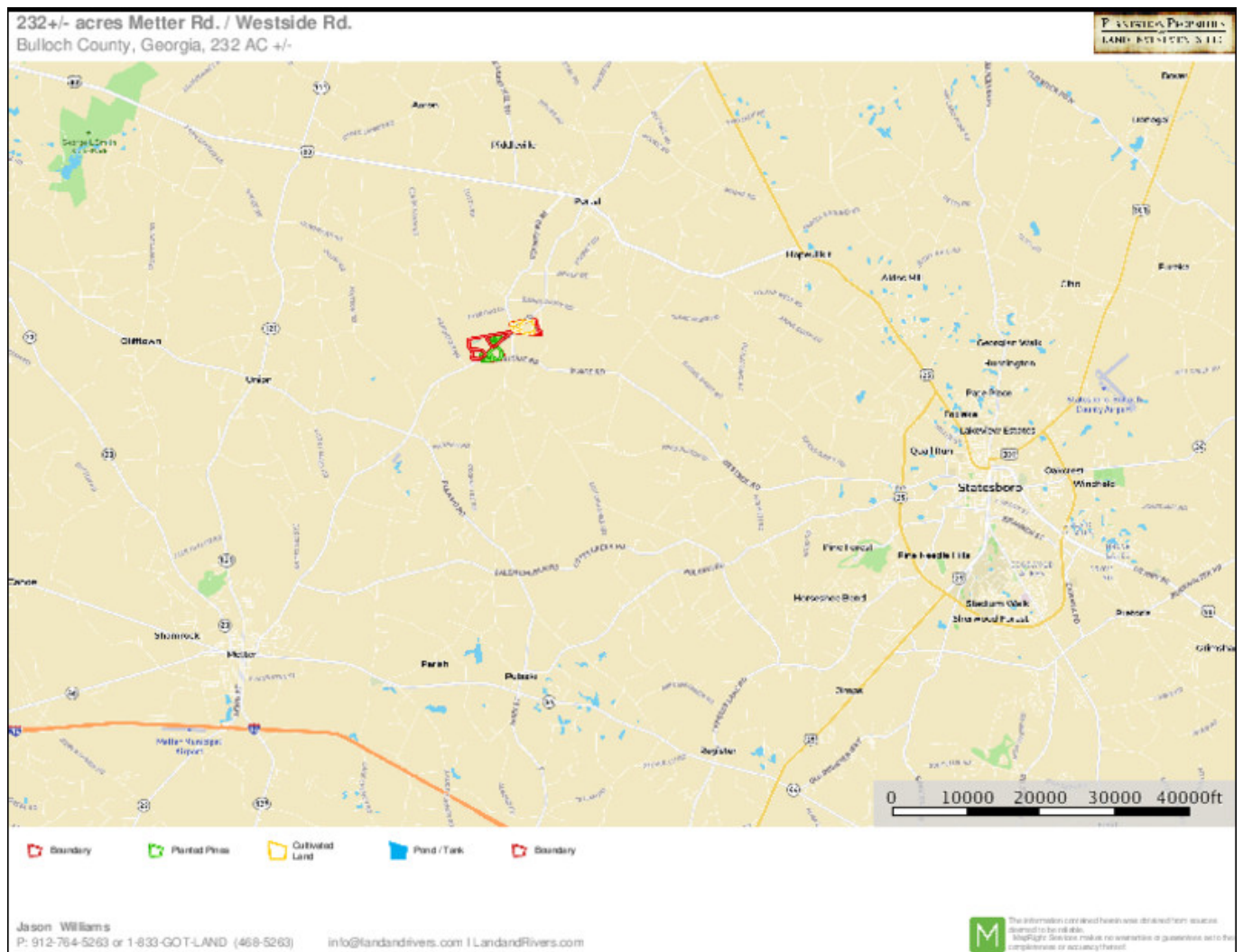
Google Maps link: [View Larger Map](#)

Westside Farm Tract 2

Published on Plantation Properties & Land Investments, LLC (<https://www.landandrivers.com>)



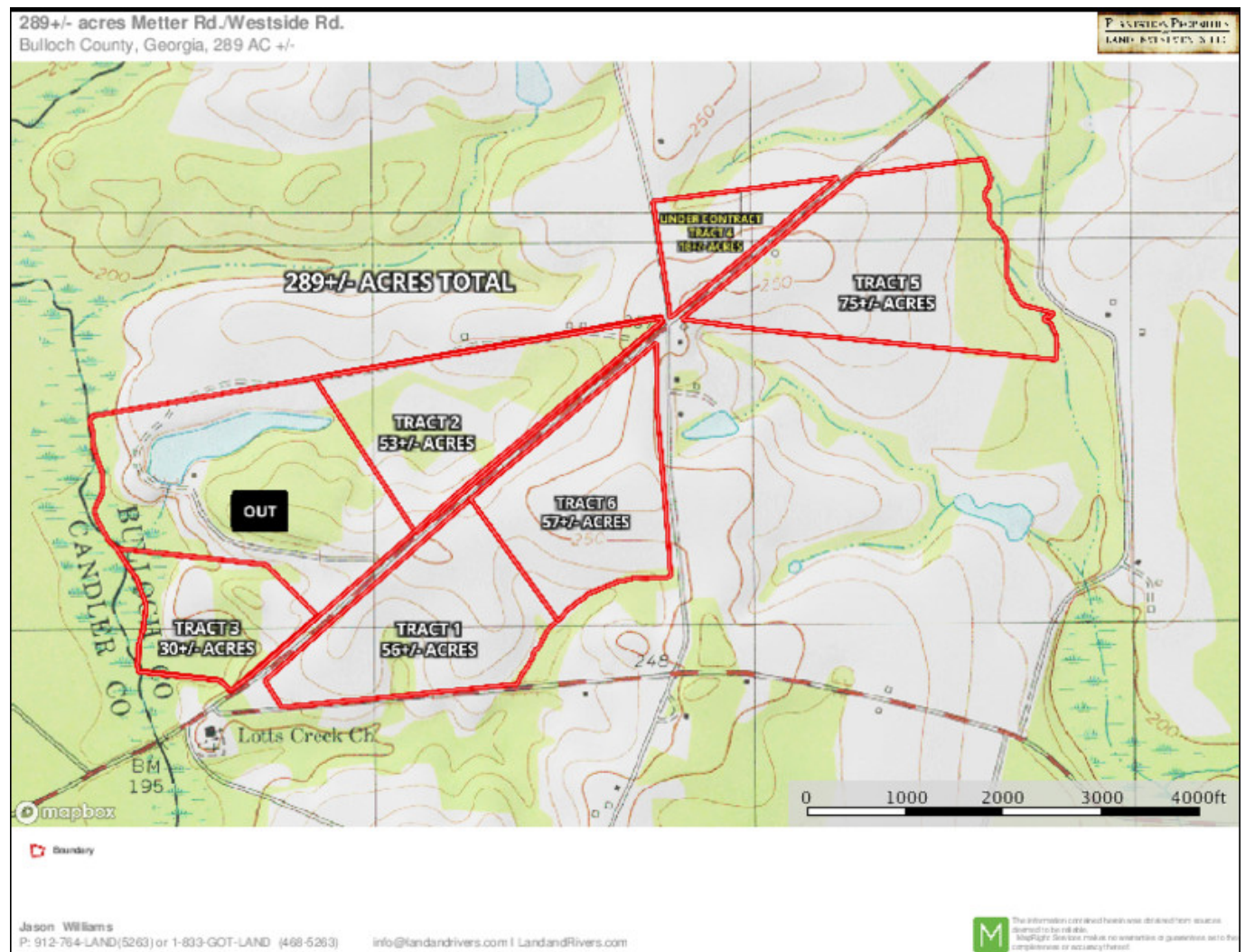
Location map



Topo map

Westside Farm Tract 2

Published on Plantation Properties & Land Investments, LLC (<https://www.landandrivers.com>)



Aerial Map

Westside Farm Tract 2

Published on Plantation Properties & Land Investments, LLC (<https://www.landanddrivers.com>)



Source URL: <https://www.landanddrivers.com/property/westside-farm-tract-2>