



Beaverdam Creek

Beaverdam Creek is a 82± acre tract located in Burke County, GA on Middleground Road. This property consists of 40± acres of cultivated land, 2 separate fields one being 27± acres and the other being 13± acres with the remaining in natural hardwoods. The frontage along Beaverdam Creek and cropland is sure to attract loads of wildlife! This would be a nice investment or recreational tract with deer, turkey, ducks and more. Call today to set up a time to visit this property!



Price: \$160,000

Property Type: Land

Status: Sold

Street/Address: Middleground Road

City: Waynesboro

State: Georgia

Zip code: 30830

County: burke

Acreage: 82

Per Acre Price: \$0.00

Phone Number: 912-764-5263 (LAND)

Email: info@LandandRivers.com

Google Maps link: [View Larger Map](#)

Beaverdam Creek

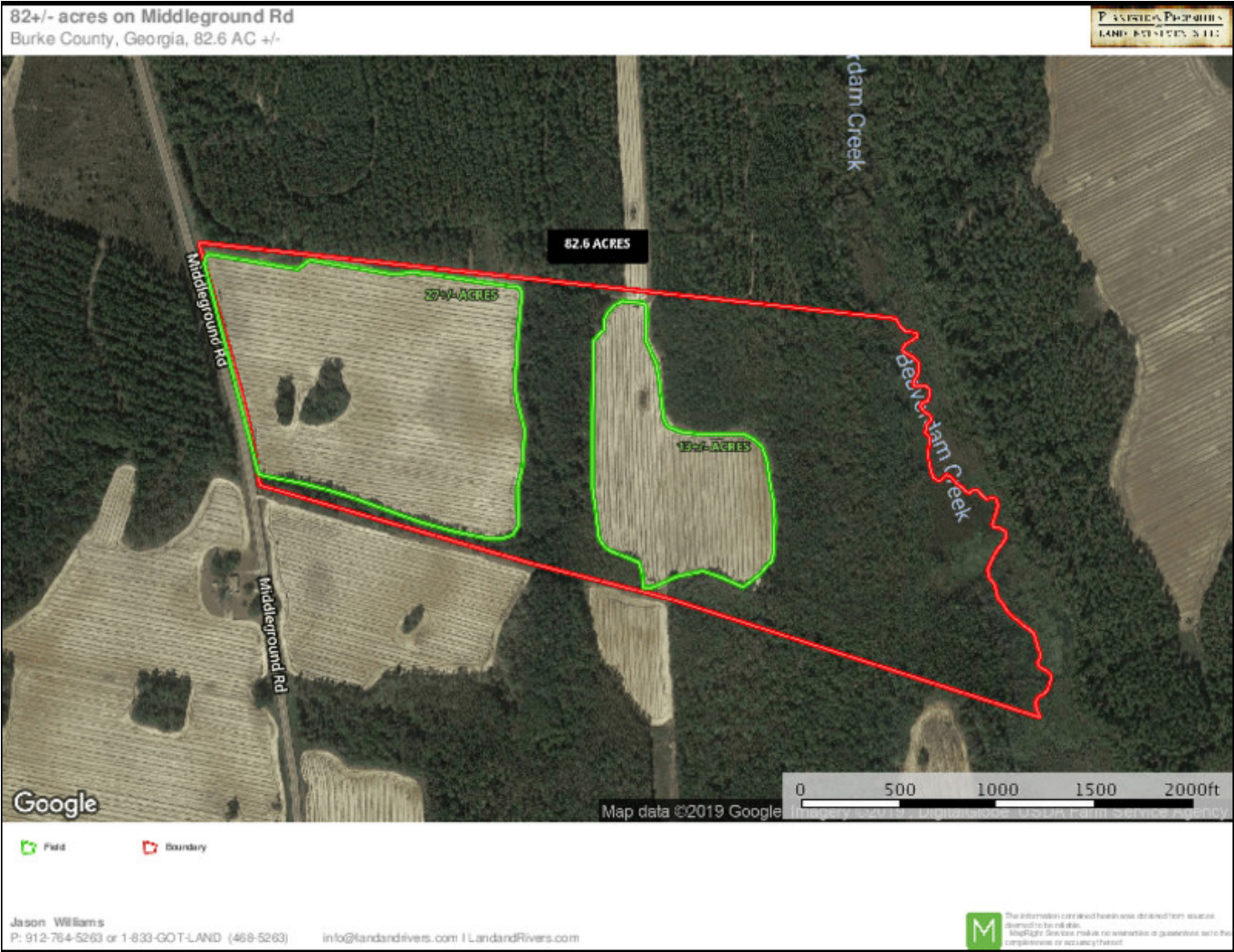
Published on Plantation Properties & Land Investments, LLC (<https://www.landandrivers.com>)



Aerial Map

Beaverdam Creek

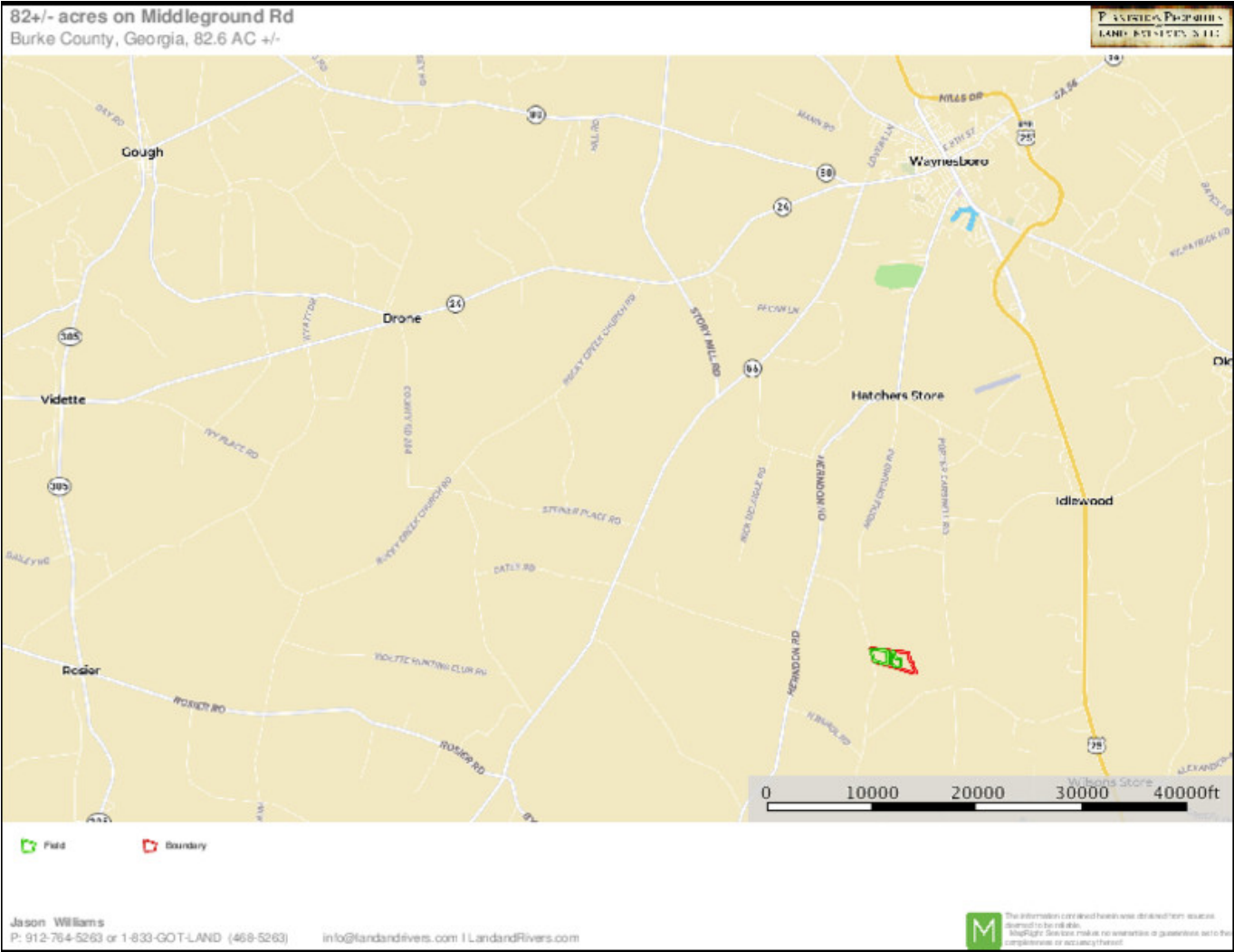
Published on Plantation Properties & Land Investments, LLC (<https://www.landandrivers.com>)



Location Map

Beaverdam Creek

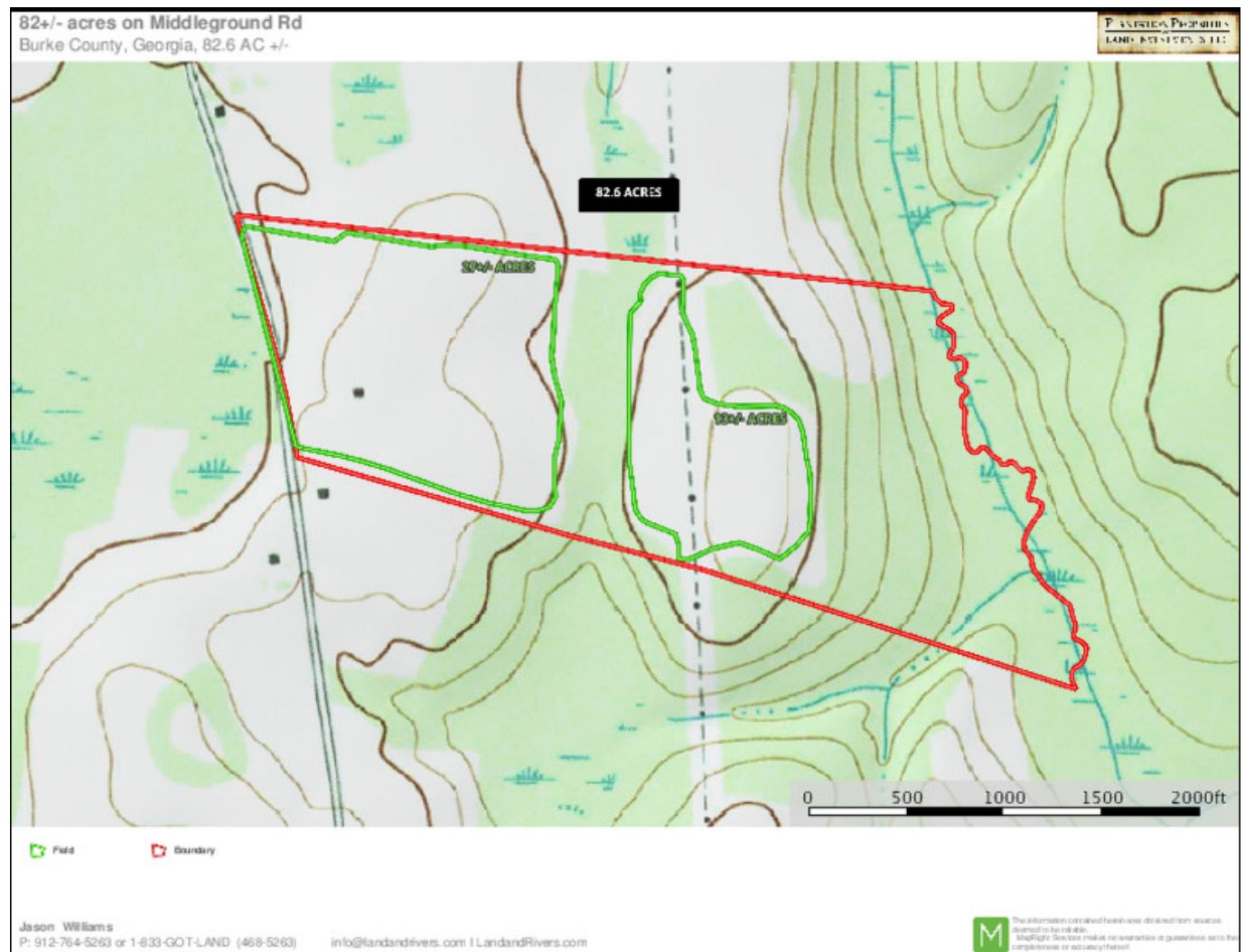
Published on Plantation Properties & Land Investments, LLC (<https://www.landandrivers.com>)



Topo Map

Beaverdam Creek

Published on Plantation Properties & Land Investments, LLC (<https://www.landandrivers.com>)



Source URL: <https://www.landandrivers.com/property/beaverdam-creek>