

## Temple Rd. Acreage

Published on Plantation Properties & Land Investments, LLC (<https://www.landanddrivers.com>)

---



## Temple Rd. Acreage

122+/- acres divided by the Burke and Jenkins County line outside of Perkins. Approximately 70 acres of the property was previously cultivated with the balance of the land in woods. The property includes a wetland area great for all kinds of wildlife. This piece would make a great recreational property or a beautiful homplace. Very private located down a county dirt road only minutes from Millen/ Waynesboro, and 40 minutes to Statesboro/Augusta.



**Price:** \$268,400

**Property Type:** Land

**Status:** Sold

**Street/Address:** Temple Road

**City:** millen

**State:** Georgia

**Zip code:** 30442

**County:** jenkins

**Acreage:** 122

**Per Acre Price:** \$2,200.00

**Phone Number:**

**Email:**

**Google Maps link:** [View Larger Map](#)

## Temple Rd. Acreage

Published on Plantation Properties & Land Investments, LLC (<https://www.landanddrivers.com>)

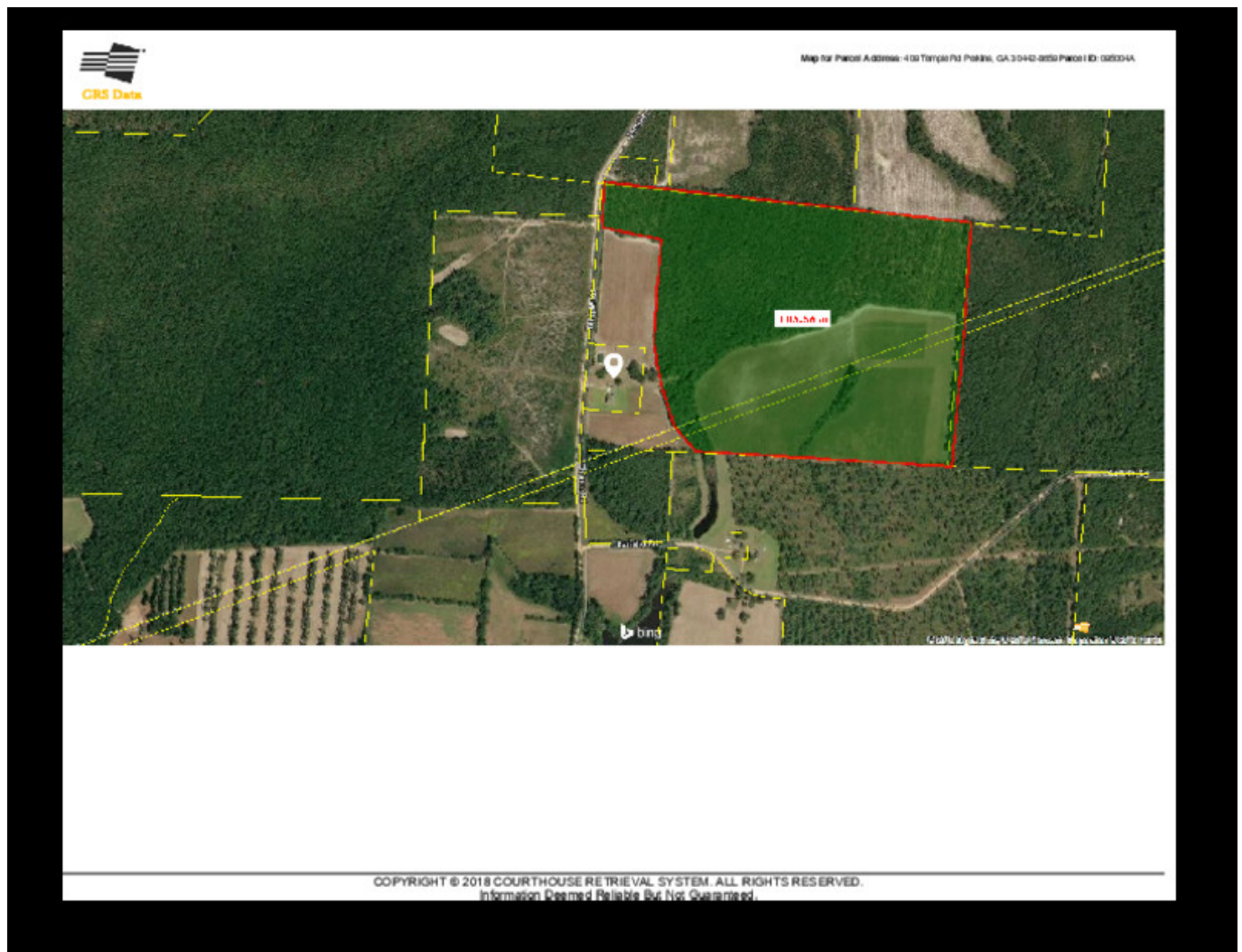
---





## Temple Rd. Acreage

Published on Plantation Properties & Land Investments, LLC (<https://www.landandrivers.com>)



Source URL: <https://www.landandrivers.com/property/temple-rd-acreage>