

Bellamys Tract 2

Published on Plantation Properties & Land Investments, LLC (<https://www.landanddrivers.com>)



Bellamys Tract 2

Bellamys Tract 2 is 148+/- acres located in Emanuel County. This tract features paved road frontage on Modoc Rd. and Hwy 56, along with a road system that continues throughout the property. The land is gently rolling with young hardwoods and mature pine stands, making this the perfect home for an abundance of wildlife. This property is a great opportunity for an avid hunter, recreational tract, or home site. Call today to schedule a showing for this must see tract!



Price: \$267,600

Property Type: Land

Status: Sold

Street/Address: Hwy 56

City: Swainsboro

State: Georgia

Zip code: 30401

County: emanuel

Acreage: 148

Per Acre Price: \$0.00

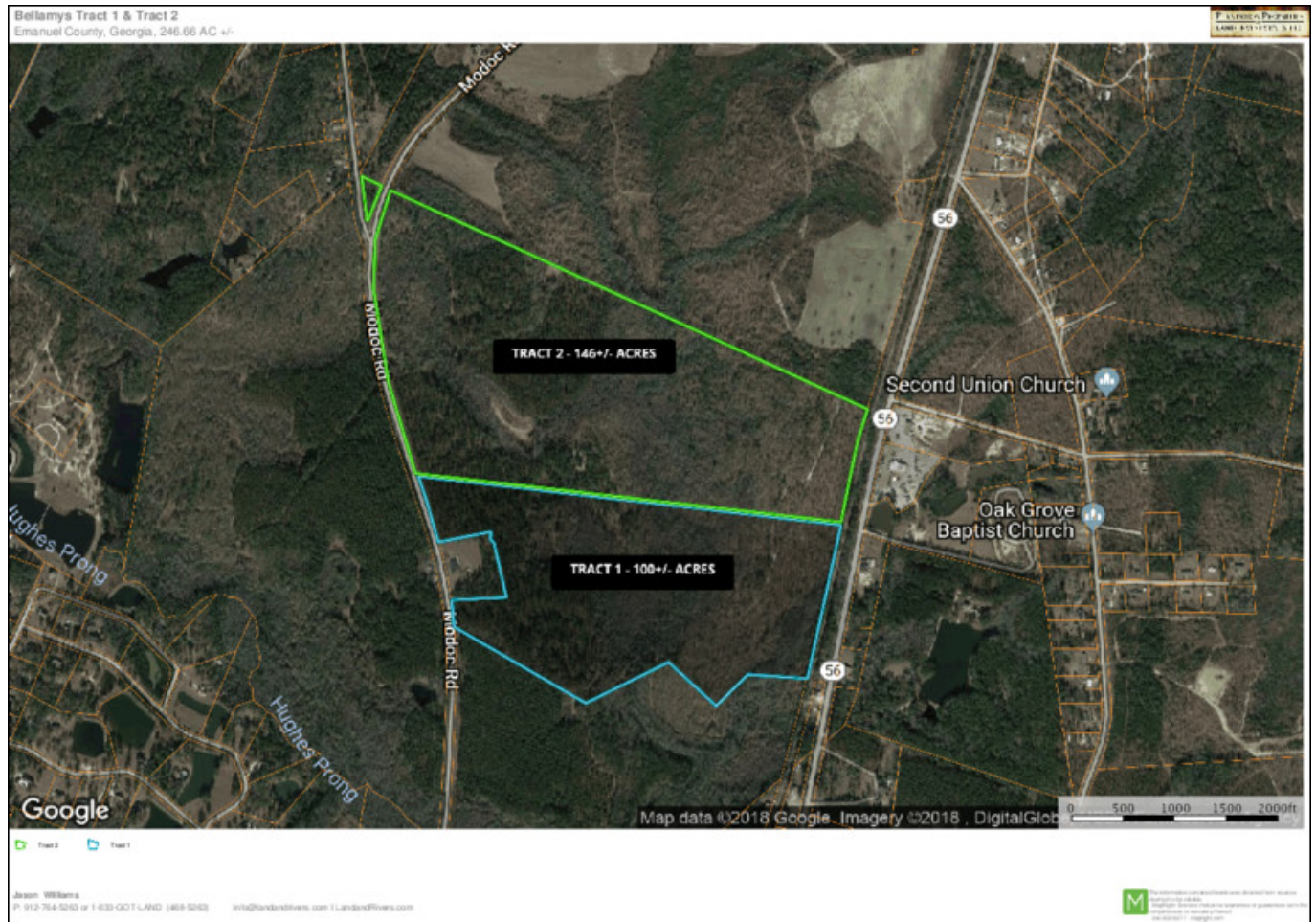
Phone Number: 912.764.LAND(5263)

Email:

Google Maps link: [View Larger Map](#)

Bellamys Tract 2

Published on Plantation Properties & Land Investments, LLC (<https://www.landanddrivers.com>)



Source URL: <https://www.landanddrivers.com/property/bellamys-tract-2>