



Groveland Oaks

Groveland Oaks 42 +/- Acres is situated in southern Bulloch County between Nevils and Pembroke, Georgia. It fronts Nevils Groveland Road, just minutes from I-16; with the convenience and layout of this property there are a variety of opportunities and investment potentials. 26 +/- acres of this property are scattered mature oak tree with natural regeneration of pines and hardwoods, creating an exceptional home site. There are 14 +/- acres of cultivated land, allowing opportunity for additional income. There is also a 2 bedroom, 856 sq ft, home surrounded by mature landscaping that could be used as a rental investment or starter home. Groveland Oaks is located in the desirable SEB school district and just minutes away from I-16; it is an ideal homeplace to raise a family and conveniently situated for travel. There is the possibility to divide this property. Call us to today to view this property!



Price: \$135,600

Property Type: Land

Status: Sold

Street/Address: 0 Nevils Groveland Road

City: Pembroke

State: Georgia

Zip code: 31321

County: bulloch

Acreage: 42

Per Acre Price: \$0.00

Phone Number: 912-682-9953

Email: brooks@landanddrivers.com

Google Maps link: [View Larger Map](#)

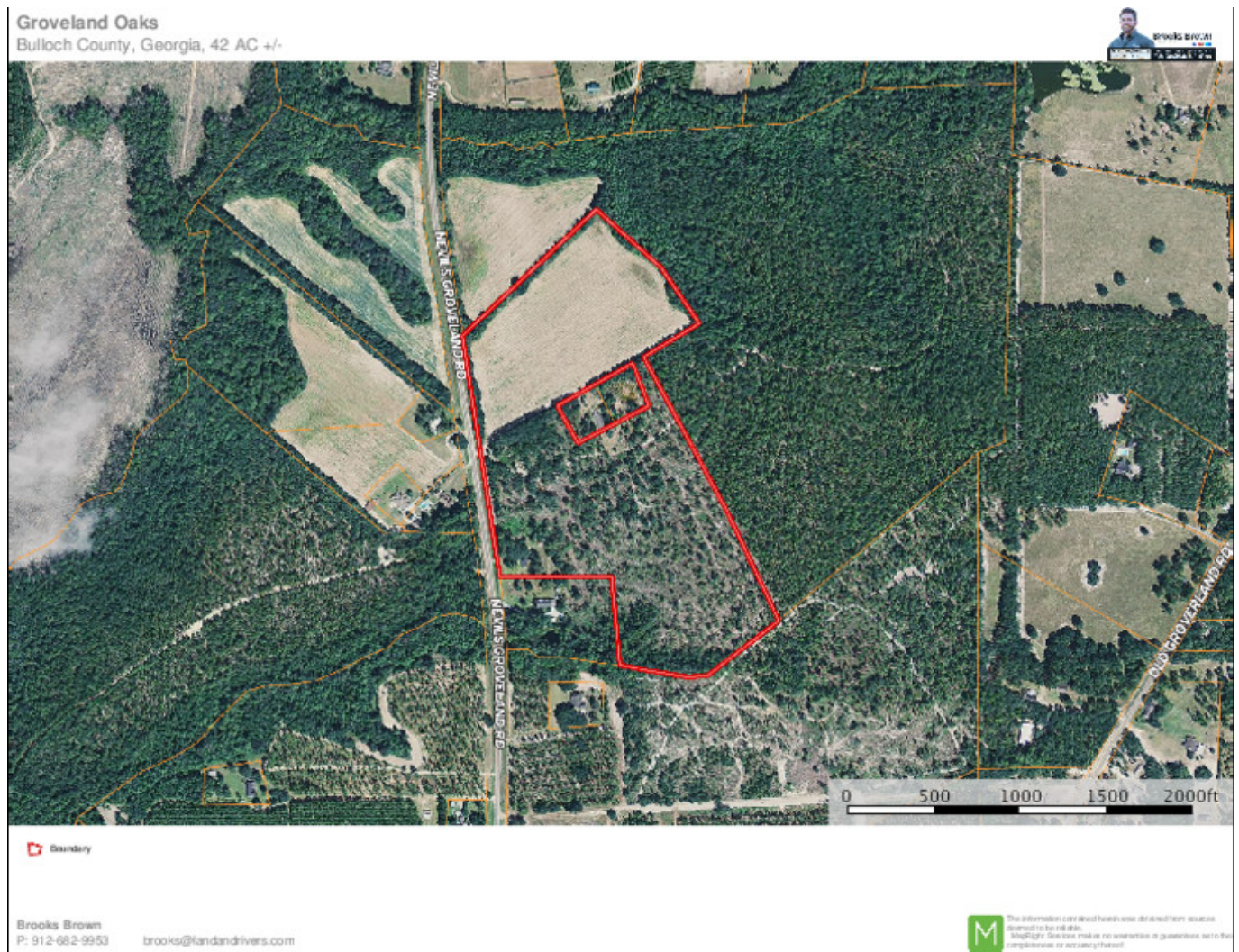
Groveland Oaks

Published on Plantation Properties & Land Investments, LLC (<https://www.landanddrivers.com>)



Groveland Oaks

Published on Plantation Properties & Land Investments, LLC (<https://www.landanddrivers.com>)



Source URL: <https://www.landanddrivers.com/property/groveland-oaks>