

Cribbs Farm - Tract 2

Published on Plantation Properties & Land Investments, LLC (<https://www.landanddrivers.com>)



Cribbs Farm - Tract 2

Cribbs Farm Parcel 2 is 29± acre farm that is 13± of cultivated land and 16± acres is natural hardwoods. This property is great for a farmer or for a home. Call today to schedule a showing. 912.764.LAND (5263)



Price: \$145,000

Property Type: Land

Status: Sold

Street/Address: Stilson Leefield Road

City: Brooklet

State: Georgia

Zip code: 30415

County: bulloch

Acreage: 29

Per Acre Price: \$5,000.00

Phone Number: 912.764.5263

Email: info@landanddrivers.com

Google Maps link: [View Larger Map](#)

Cribbs Farm - Tract 2

Published on Plantation Properties & Land Investments, LLC (<https://www.landanddrivers.com>)



Full Map

Published on Plantation Properties & Land Investments, LLC (<https://www.landandrivers.com>)

59.11 ACRES

J.R. Cribbs Rd

Stillson-Leaflet Rd

0 500 1000 1500 2000ft

Google

Map data ©2018 Google Imagery ©2018, DigitalGlobe, GeoEye, Earthstar (NAIP), Airphoto, USDA, etc.

Boundary

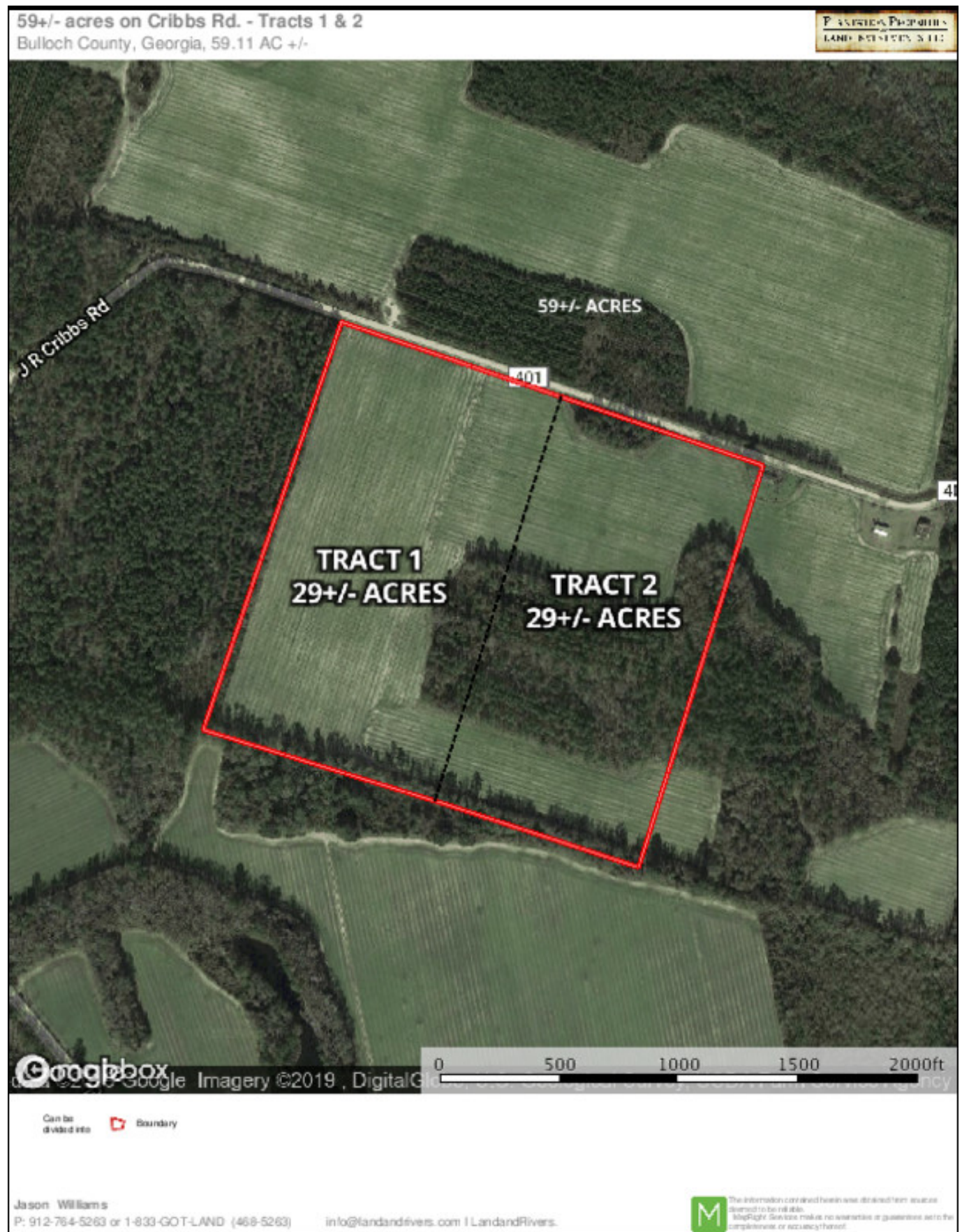
Jason Williams
P: 912-764-5263 or 1-833-GOT-LAND (468-5263)
info@landandrivers.com | LandandRivers.com

The information contained herein was derived from sources deemed reliable by the seller. No warranty is made as to the completeness or accuracy thereof.

Page 3 of 4

Cribbs Farm - Tract 2

Published on Plantation Properties & Land Investments, LLC (<https://www.landandrivers.com>)



Source URL: <https://www.landandrivers.com/property/cribbs-farm-tract-2>