

## Cribbs Farm - Tract 1

Published on Plantation Properties & Land Investments, LLC (<https://www.landanddrivers.com>)

---



## Cribbs Farm - Tract 1

Cribbs Farm Parcel 1 is 29± acre farm that is 24± of cultivated land. The other 5± acres is natural hardwoods. This property is great for a farmer or for a home. Call today to schedule a showing. 912.764.LAND (5263)



**Price:** \$145,000

**Property Type:** Land

**Status:** Sold

**Street/Address:** Stilson Leefield Road

**City:** Brooklet

**State:** Georgia

**Zip code:** 30415

**County:** bulloch

**Acreage:** 29

**Per Acre Price:** \$5,000.00

**Phone Number:** 912.764.5263

**Email:** [info@landanddrivers.com](mailto:info@landanddrivers.com)

**Google Maps link:** [View Larger Map](#)

## Cribbs Farm - Tract 1

Published on Plantation Properties & Land Investments, LLC (<https://www.landanddrivers.com>)

---



**Full Map**

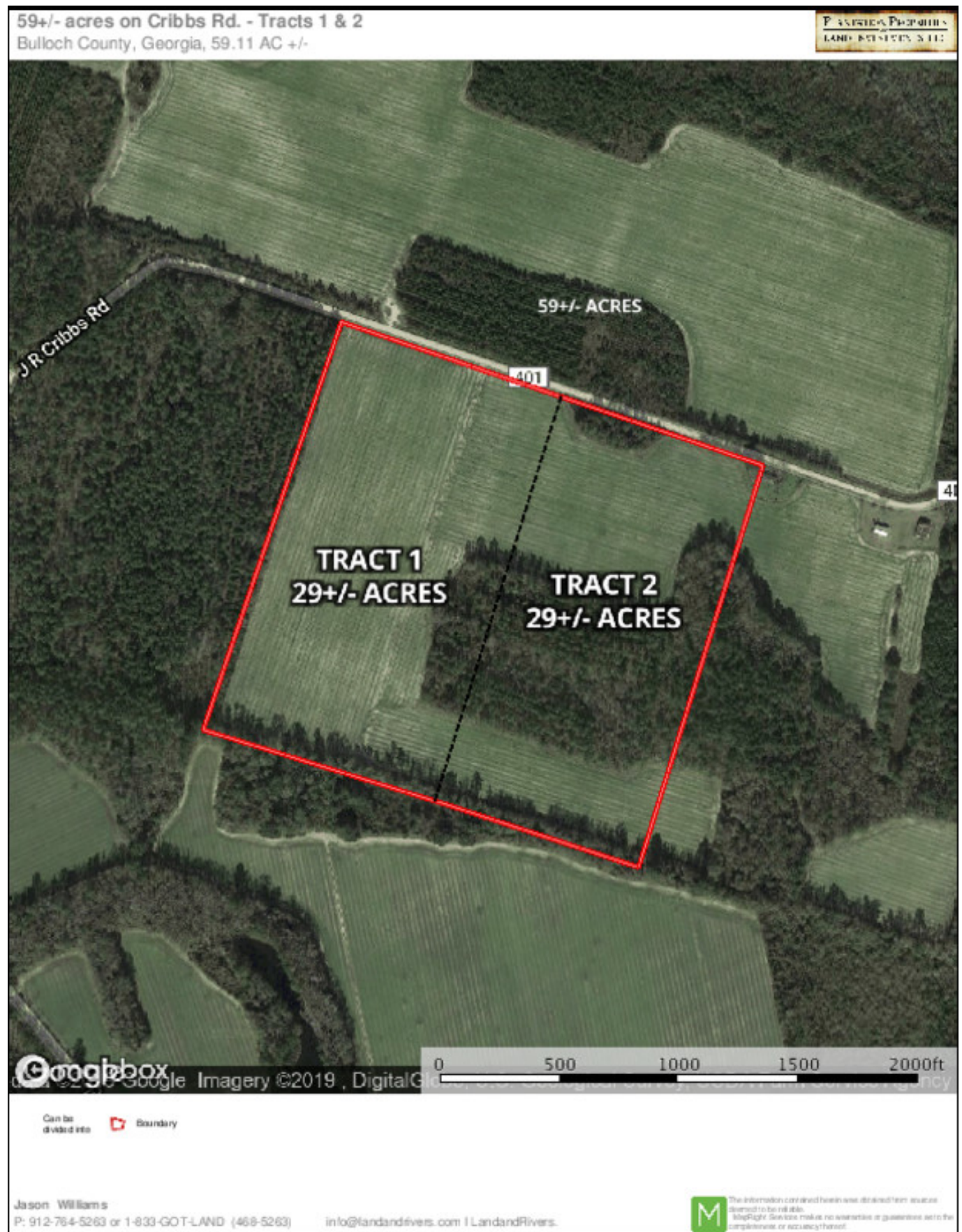
## Cribbs Farm - Tract 1

Published on Plantation Properties & Land Investments, LLC (<https://www.landandrivers.com>)



## Cribbs Farm - Tract 1

Published on Plantation Properties & Land Investments, LLC (<https://www.landandrivers.com>)



Source URL: <https://www.landandrivers.com/property/cribbs-farm-tract-1>