

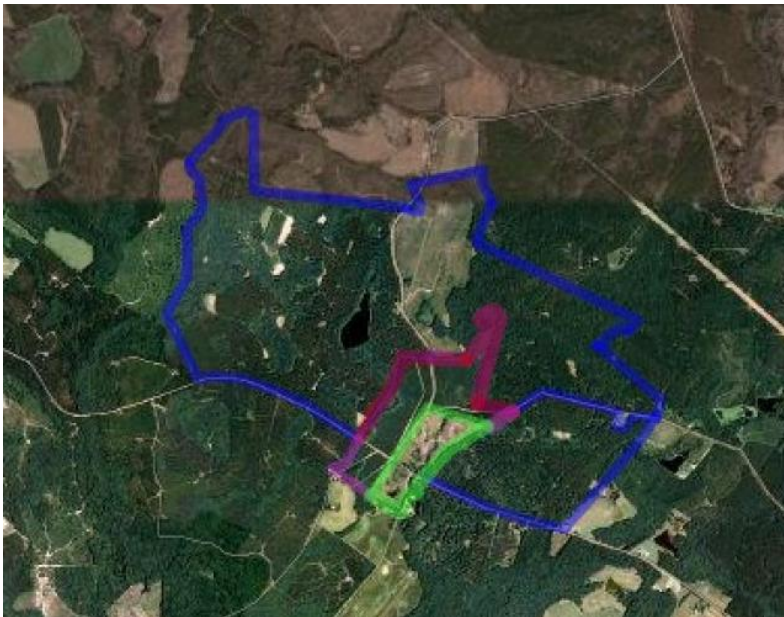
1179+/- Acres, Screven County

Published on Plantation Properties & Land Investments, LLC (<https://www.landanddrivers.com>)



1179+/- Acres, Screven County

SOLD - This property is located in rural Screven County, 1.5 hours north of Savannah. It is surrounded by large private landowners including timberland and agriculture. The tract contains upland pine areas as well as bottomland hardwoods mixed with natural pine, red oak, maple and gum. The planted pine area has been first thinned approximately two years ago and the trees are now 20 years old. The tract contains twenty well established food plots, several small agricultural fields, a 20-acre fish pond with boat ramp and dock, a 1,740-square foot farm house built in 1928 and an equipment shed. The tract is easily accessible by county maintained dirt roads, and the interior roads traverse the entire tract. This tract offers any buyer much outdoor enjoyment as well as positive cash flow for years to come.



Price: \$2,947,500
Property Type: Land
Status: Sold
Street/Address: Three Path rd
City: Sylvania
State: Georgia
Zip code: 30467
County: screven
Acreage: 1179
Per Acre Price: \$2,500.00
Phone Number:
Email:
Google Maps link: [View Larger Map](#)

1179+/- Acres, Screven County

Published on Plantation Properties & Land Investments, LLC (<https://www.landandrivers.com>)

Source URL: <https://www.landandrivers.com/property/1179-acres-screven-county>