

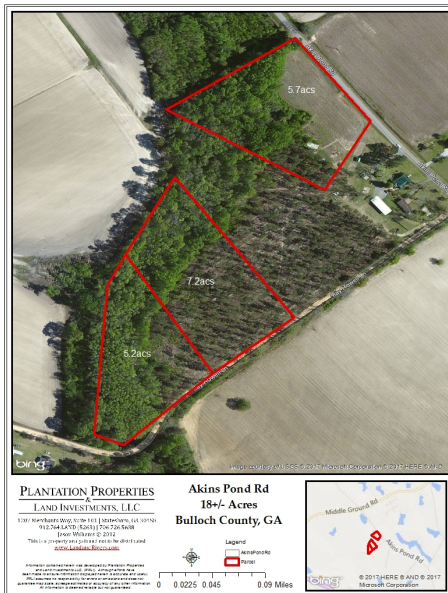
## Ray Howell Tract 3

Published on Plantation Properties & Land Investments, LLC (<https://www.landanddrivers.com>)



## Ray Howell Tract 3

This 7+/- acre tract of land features planted pines, dirt road frontage, a nice hardwood border and a creek running along the back of the property. Property is located 7+/- miles from downtown Statesboro, 9+/- miles from Georgia Southern University and approximately 1 hour from Savannah, GA. This would be a great place to build your dream home! Call us today (912)764-5263 \*Additional acreage available \*No mobile homes



**Price:** \$49,999

**Property Type:** Land

**Status:** Sold

**Street/Address:** Ray Howell Rd

**City:** Statesboro

**State:** Georgia

**Zip code:** 30458

**County:** bulloch

**Acreage:** 7

**Per Acre Price:** \$0.00

**Phone Number:** 912.764.5263

**Email:** [info@landanddrivers.com](mailto:info@landanddrivers.com)

**Google Maps link:** [View Larger Map](#)

## Aerial Map

## Ray Howell Tract 3

Published on Plantation Properties & Land Investments, LLC (<https://www.landanddrivers.com>)



### PLANTATION PROPERTIES & LAND INVESTMENTS, LLC

1857 Middle Ground Way, Suite 101 | Marietta, GA 30067  
811.754.1450 (T) | 706.726.8688 (F)  
Susan Williams (S) 704.7  
This is a property image and not to be distributed.  
[www.landanddrivers.com](https://www.landanddrivers.com)



Source URL: <https://www.landanddrivers.com/property/ray-howell-tract-3>