

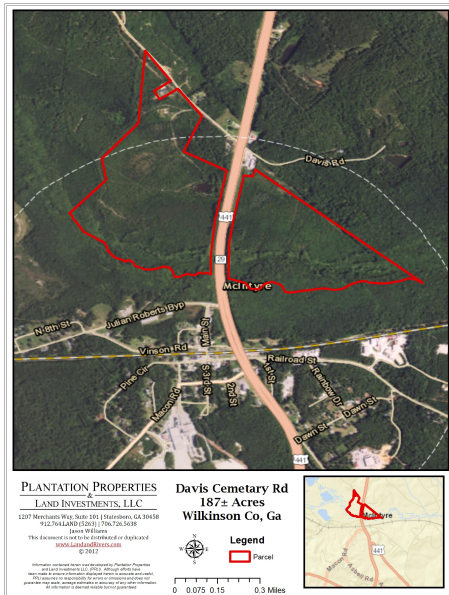
## Davis Cemetery Rd

Published on Plantation Properties & Land Investments, LLC (<https://www.landanddrivers.com>)



## Davis Cemetery Rd

Davis Cemetery Rd is a 187+/- acre tract located in Wilkinson County, GA. This tract features a good interior road system with mostly wooded land and a duck pond. This property would be a great opportunity for any buyer. Make this tract your new grand hunting retreat, home or venture property. Enjoy hunting, trail rides, camping and more all on your own land. Let us know if you have an interest in this excellent tract and we will make arrangements to show you this property. 912.764.LAND(5263)



**Price:** \$168,300

**Property Type:** Land

**Status:** Sold

**Street/Address:** Davis Cemetery Rd

**City:** McIntyre

**State:** Georgia

**Zip code:** 31054

**County:** wilkinson

**Acreage:** 187

**Per Acre Price:** \$900.00

**Phone Number:** 912.764.LAND(5263)

**Email:** [info@landanddrivers.com](mailto:info@landanddrivers.com)

**Google Maps link:** [View Larger Map](#)

## Davis Cemetery Rd

Published on Plantation Properties & Land Investments, LLC (<https://www.landanddrivers.com>)

---



## Davis Cemetery Rd

Published on Plantation Properties & Land Investments, LLC (<https://www.landanddrivers.com>)



### PLANTATION PROPERTIES & LAND INVESTMENTS, LLC

1207 Merchants Way, Suite 101 | Statesboro, GA 30910  
912.764.LAND (5263) | 706.726.5698

Jason Williams

Illustration is not to be drawn unless it is depicted

[www.LandandDrivers.com](https://www.LandandDrivers.com)  
3/29/17



Source URL: <https://www.landanddrivers.com/property/davis-cemetery-rd>