

Sylvania home Reduced

Published on Plantation Properties & Land Investments, LLC (<https://www.landanddrivers.com>)



Sylvania home Reduced

Just reduced, brick home built in 1950 on a beautiful, large corner lot in the historic downtown area of Sylvania. This 1800 sq ft, 2br/2bath home has a large kitchen, separate dining, living and den areas and an enclosed porch on the rear of the home. Great investment property or place to call home. This home is being sold as is, needs some updating, Seller will give \$5,000 credit towards repairs/closing costs.



Price: \$62,000

Property Type: Residential

Status: Sold

Street/Address: 215 Hobby Ave

City: Sylvania

State: Georgia

Zip code: 30467

County: Screven

Acreage:

Per Acre Price: \$0.00

Phone Number: 478-494-4039

Email: clara@landanddrivers.com

Google Maps link: [View Larger Map](#)

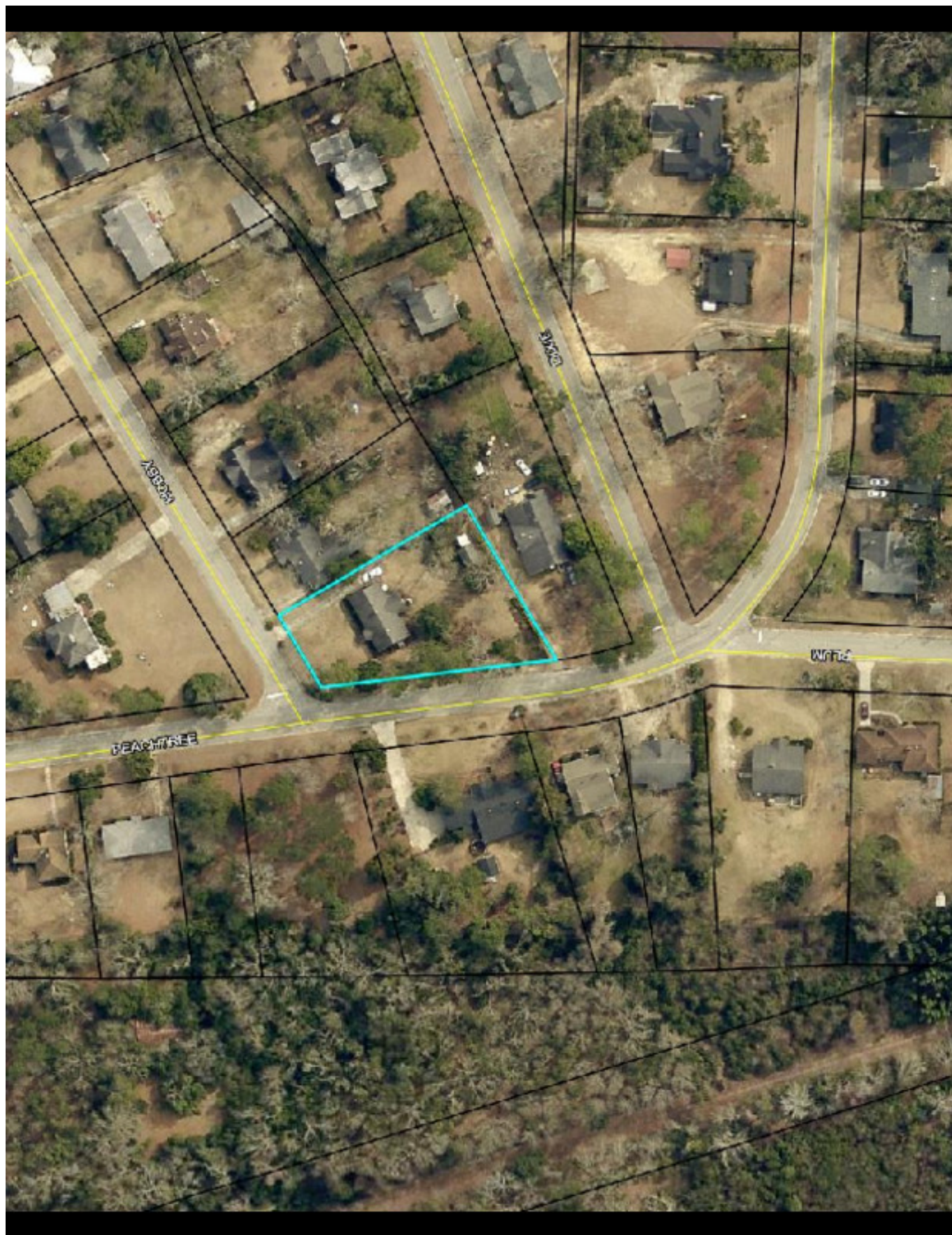
Sylvania home Reduced

Published on Plantation Properties & Land Investments, LLC (<https://www.landanddrivers.com>)



Sylvania home Reduced

Published on Plantation Properties & Land Investments, LLC (<https://www.landanddrivers.com>)



Source URL: <https://www.landanddrivers.com/property/sylvania-home-reduced>