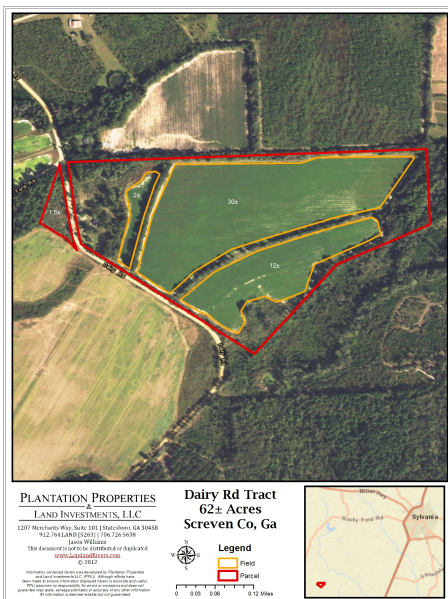




Dairy Rd Tract

The Dairy Rd Tract is a 62±acre farm in Screven County, GA. With dirt road frontage, this tract features cultivated land, wooded acreage, and a 1302sqft. home with 3 bedrooms and 1 bathroom. There is approximately 44±acs of cultivated land with the remaining acreage being wooded/open land. Perfect new farm or investment property! You can easily make this tract your new farm, weekend retreat, or venture property. Enjoy hunting, farming, camping, and much more all on your own land. Approximately 25 minutes from Statesboro, GA. Call today for more information or to view this great tract. 912.764.5263



Price: \$125,000

Property Type: Land

Status: Sold

Street/Address: 1099 Dairy Rd

City: Sylvania

State: Georgia

Zip code: 30467

County: screven

Acreage: 62

Per Acre Price: \$0.00

Phone Number: 912.764.LAND(5263)

Email: info@landanddrivers.com

Google Maps link: [View Larger Map](#)

Dairy Rd Tract

Published on Plantation Properties & Land Investments, LLC (<https://www.landanddrivers.com>)



PLANTATION PROPERTIES & LAND INVESTMENTS, LLC

1207 Meridian Way, Suite 101 | Statesboro, GA 30458

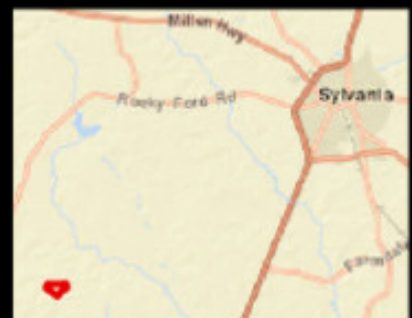
912 764 1440 (5267) | 706 726 5658

Joann Williams

This document is not to be distributed or duplicated

www.landandinvest.com

© 2012



Source URL: <https://www.landanddrivers.com/property/dairy-rd-tract>