

34.15 acres on Meinhard Road

Published on Plantation Properties & Land Investments, LLC (<https://www.landanddrivers.com>)

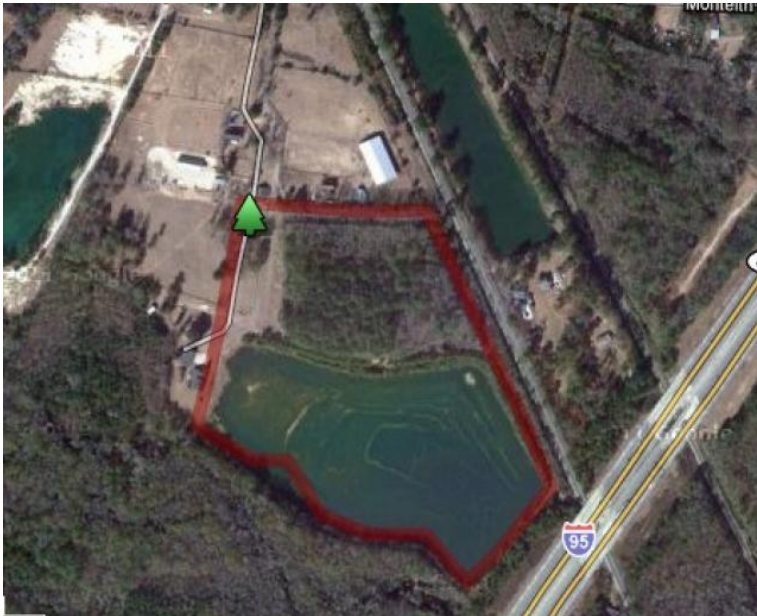


34.15 acres on Meinhard Road

34.15 +/- acres on Meinhard Road. Located in Port Wentworth and joins I-95. Convenient to Pooler and Savannah. Features large mature timber and a 26 acre pond. Close to Staffordshire Equestrian Facility. Call today for more information!

Features:

26 acre lake/pond, large mature timber, and convenient to Savannah and Pooler.



Price: \$150,000

Property Type: Land

Status: Sold

Street/Address:

City: chatham county

State: Georgia

Zip code: 31405

County: chatham

Acreage: 34

Per Acre Price: \$0.00

Phone Number:

Email:

Google Maps link: [View Larger Map](#)

Source URL: <https://www.landanddrivers.com/property/3415-acres-meinhard-road>