

Buck Creek Farm

Published on Plantation Properties & Land Investments, LLC (<https://www.landanddrivers.com>)



Buck Creek Farm

Buck Creek Farm is a 123±acre property in Screven County, GA. Located on Buck Creek Rd in Sylvania, GA this tract features irrigated farmland, a well, open land, and wooded land. There is approximately 87±acres of irrigated farmland and 36±acres of open/wooded land. Perfect investment and recreational property for any buyer! You can easily make this place your new farm, weekend retreat, or venture property. Enjoy hunting, farming, camping, and much more all on your own property. Approximately 25 minutes from Statesboro, GA. Call today for more information or to view this great property. 912.764.5263



Price: \$492,000

Property Type: Land

Status: Sold

Street/Address: 1919 Buck Creek Rd

City: Sylvania

State: Georgia

Zip code: 30467

County: screven

Acreage: 123

Per Acre Price: \$4,000.00

Phone Number: 912.764.LAND(5263)

Email: info@landanddrivers.com

Google Maps link: [View Larger Map](#)

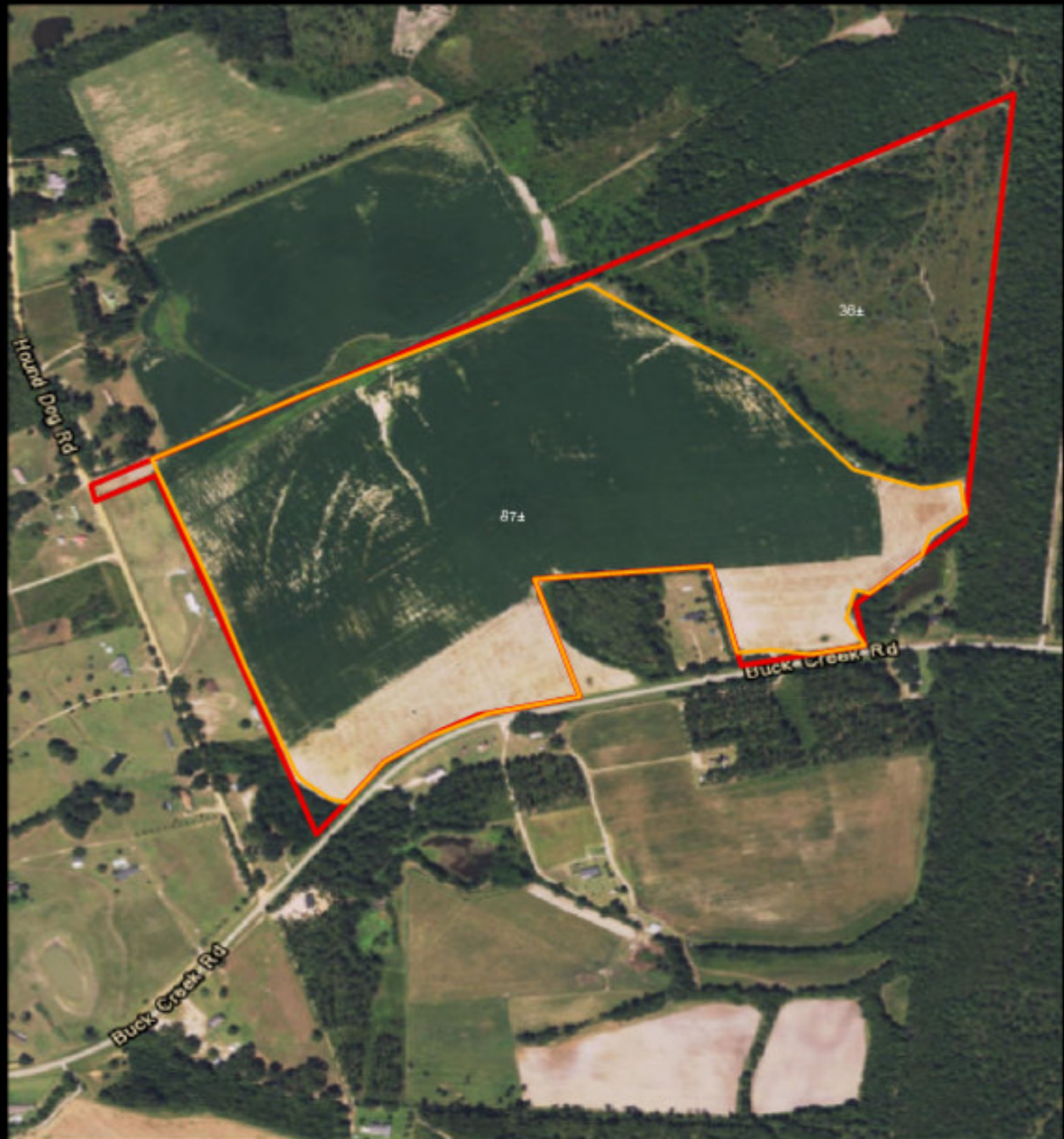
Buck Creek Farm

Published on Plantation Properties & Land Investments, LLC (<https://www.landandrivers.com>)



Buck Creek Farm

Published on Plantation Properties & Land Investments, LLC (<https://www.landanddrivers.com>)



PLANTATION PROPERTIES & LAND INVESTMENTS, LLC

1207 Mendocino Way, Suite 101 | Sausalito, CA 94965

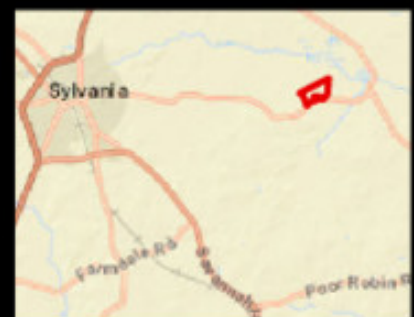
913.764.1410 (S267) | 706.726.5658

Jason Williams

This document is not to be distributed or duplicated

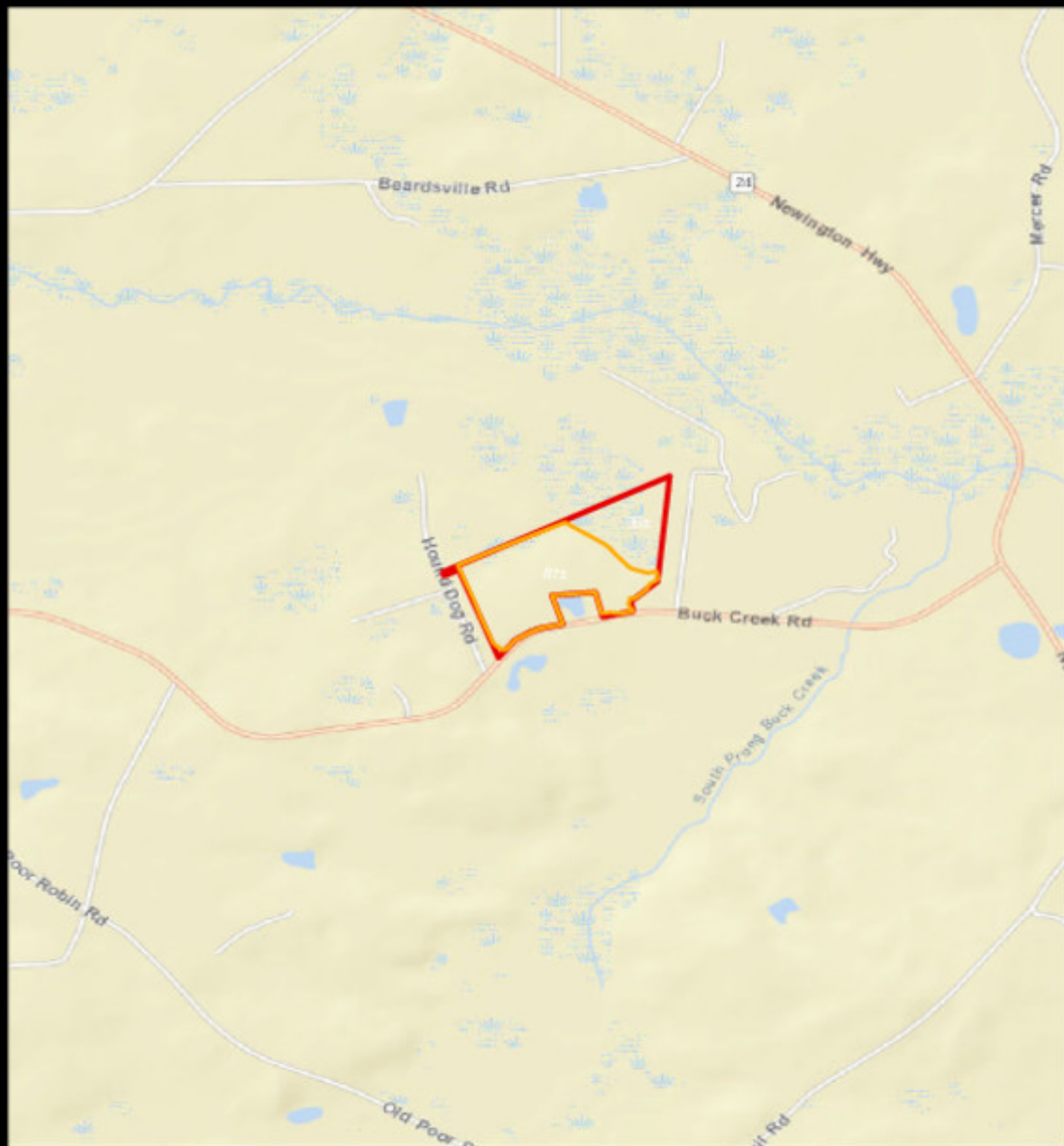
www.landanddrivers.com

© 2012



Buck Creek Farm

Published on Plantation Properties & Land Investments, LLC (<https://www.landanddrivers.com>)



PLANTATION PROPERTIES & LAND INVESTMENTS, LLC

1207 Mendocino Way, Suite 101 | Sta Rosa, CA 95458

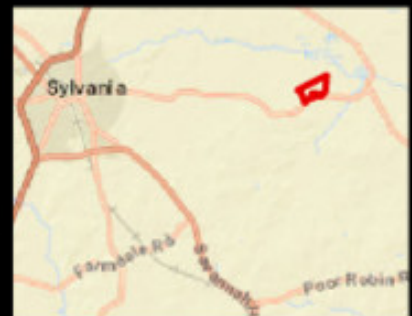
912.764.1440 (5267) | 706.726.5638

Jason Williams

This document is not to be distributed or duplicated

www.landandinvest.com

© 2012



Source URL: <https://www.landanddrivers.com/property/buck-creek-farm-0>