



Morning Dove Lane

Wolfe Creek Farm is Located in Candler County just south of I-16 off highway 121 on Mourning Dove Lane. Escape from the hustle and bustle on the privately locate land at the end of a private drive. This 87+/- acre farm features a 2 acre pond, shop with storage and living quarters, pine plantation, hardwood borders and much more. Deer, dove, quail and turkey are a frequently spotted throughout these woods. The Improvements include a very nice 2 story metal barn/shop with a lean-to and living quarter. There is underground power and a well. The living area consists of a kitchen and spacious family room, 2 bedrooms and a bath. Invite all the family and friends, this home will sleep 10 or more. This property is an excellent recreational investment and weekend get-a-way. Enjoy the outdoor fireplace or fish off the dock of your own private pond. Call Jason today to view this tract 912.764.LAND (5263)

Features:

- Hunting and Fishing Land
- Pine Plantation
- Hardwood Borders
- 2 Story Metal Building w/ Living Area
- Shop Storage
- Outdoor Fireplace
- Pond w/ private Dock
- Underground Power
- Well & Septic
- Very Private



Price: \$259,900

Property Type: Land

Morning Dove Lane

Published on Plantation Properties & Land Investments, LLC (<https://www.landanddrivers.com>)

Status: Sold

Street/Address: mourning dove lane

City: Metter

State: Georgia

Zip code: 30439

County: candler

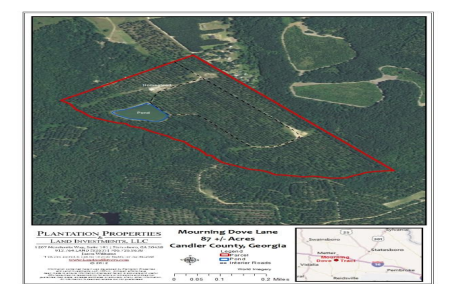
Acreage: 87

Per Acre Price: \$2,987.00

Phone Number:

Email:

Google Maps link: [View Larger Map](#)



Source URL: <https://www.landanddrivers.com/property/morning-dove-lane>