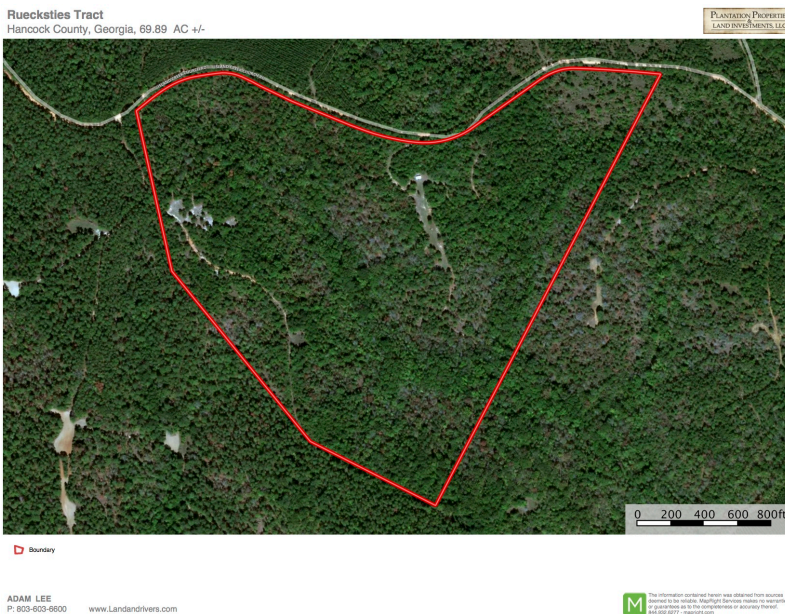




## Island Creek

**PRICE REDUCED!!!!!!** This property is a wonderful hunter's getaway. It features a very nicely done cabin converted from a metal building. It has been insulated, wired and plumbed. The cabin runs off of 2 12v batteries or a generator. It also has an elevated water tank to provide fresh water for usage in the cabin. It also features hardwood bottoms and lots of natural timber. Loaded with White Oaks. If you are looking to have your own slice of heaven to hunt Turkeys, Deer and small game this is your property. Quietly nestled in the backwoods of Hancock county off Island Creek Church Rd very close to lake Sinclair. The property would be about an hour and a half drive from Atlanta or from Augusta. Call Adam Lee to set up your private tour. 803-603-6600.



**Price:** \$145,000

**Property Type:** Land

**Status:** Sold

**Street/Address:** 69.89 acres Island Creek Church Rd

**City:** Sparta

**State:** Georgia

**Zip code:** 31087

**County:** hancock

**Acreage:** 69

**Per Acre Price:** \$2,074.69

**Phone Number:** 803-603-6600

**Email:** [adamlee@landanddrivers.com](mailto:adamlee@landanddrivers.com)

**Google Maps link:** [View Larger Map](#)

## Island Creek

Published on Plantation Properties & Land Investments, LLC (<https://www.landanddrivers.com>)

---



## Aerial Map



## Island Creek

Published on Plantation Properties & Land Investments, LLC (<https://www.landanddrivers.com>)



Source URL: <https://www.landanddrivers.com/property/island-creek>