



## **Ponderosa Pond**

Ponderosa Pond is a 121± acre tract located in Jefferson County, GA along Highway 221. This property features a 832 sq. feet cabin with cypress siding that has a family room, kitchen, two bedrooms, one bath, and front and back porches. There is approximately 10±acs of pasture/open land, a 3.5 acre pond, and the rest of the land is in natural pine. There is also a small older house located at the entrance of the property with pecan trees scattered about. With a gated entrance and an excellent road system throughout the property, this would be the perfect place to build your dream home or a great get-a-way place on the weekend. This tract is conveniently located 5 miles southwest of Bartow, GA at 12351 Hwy 221. Enjoy hunting, trail rides, camping, horseback riding, and more all on your own land. Call today for more details or to view this property. \*\*Pictures of inside of cabin are available upon request.



**Price:** \$250,000

**Property Type:** Land

**Status:** Sold

**Street/Address:** 12351 Hwy 221

**City:** bartow

**State:** Georgia

**Zip code:** 30413

**County:** jefferson

**Acreage:** 121

**Per Acre Price:** \$0.00

**Phone Number:** 912.764.LAND(5263)

**Email:** [info@landanddrivers.com](mailto:info@landanddrivers.com)

**Google Maps link:** [View Larger Map](#)

## Ponderosa Pond

Published on Plantation Properties & Land Investments, LLC (<https://www.landandrivers.com>)

---





Published on Plantation Properties & Land Investments, LLC (<https://www.landandrivers.com>)

Maple

Source: Esri, HERE, DeLorme, TomTom, Intermap, increment P Corp., CNES/Airbus, USDA, FAO, RPA, NRCAN, GEBCO, IGN, Radarsat NL, Ordnance Survey, Esri Japan, METI, Esri China (Hong Kong), Swisstopo, MapboxIndia, © OpenStreetMap contributors, and the GIS User Community, Source: Esri, DigitalGlobe, GeoEye, Earthstar, Earthstar Geographics, CNES/Airbus DS, USDA, USGS, AeroX, GeoMapping, AeroGRID, IGN, IGN, Swisstopo, and the GIS User Community, Esri, HERE, DeLorme, MapboxIndia, © OpenStreetMap contributors, Esri, HERE, DeLorme, TomTom, MapboxIndia, © OpenStreetMap contributors, and the GIS user community

2014





## Ponderosa Pond

Published on Plantation Properties & Land Investments, LLC (<https://www.landanddrivers.com>)



### PLANTATION PROPERTIES & LAND INVESTMENTS, LLC

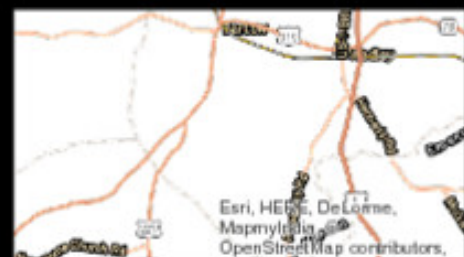
1207 Merchants Way, Suite 101 | Statesboro, GA 30450  
912.284.4462 | 478.523.2148

Michael Wilson

This document is not to be distributed or replicated

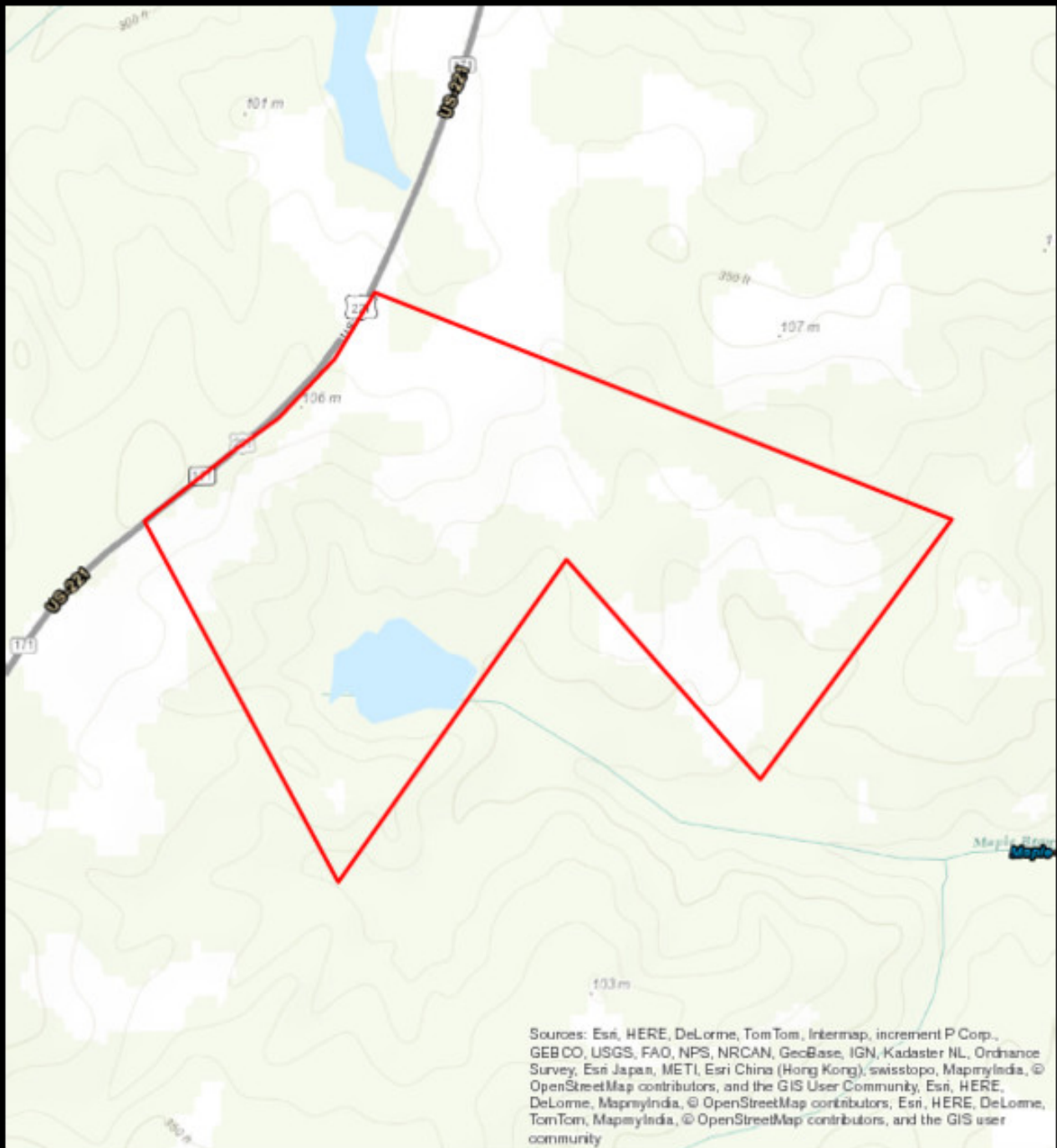
[www.landanddrivers.com](https://www.landanddrivers.com)

© 2014



## Ponderosa Pond

Published on Plantation Properties & Land Investments, LLC (<https://www.landanddrivers.com>)



### PLANTATION PROPERTIES & LAND INVESTMENTS, LLC

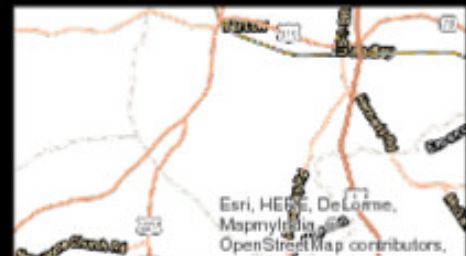
1207 Merchants Way, Suite 101 | Statesboro, GA 30450  
912.284.4462 | 478.523.2148

Michael Wilson

This document is not to be distributed or replicated

[www.landanddrivers.com](https://www.landanddrivers.com)

© 2014



Source URL: <https://www.landanddrivers.com/property/ponderosa-pond>