



Rolling Pastures

Rolling Pastures is approximately 413±acs of fenced pasture and wooded land. Conveniently located about 25 miles from Statesboro, Georgia and 60 miles from Savannah, Georgia. The quiet seclusion is just right for those seeking to relax from all the hustle and bustle yet only minutes away from I-16. You can be at the airport in a mere 20 minutes or in downtown Savannah in only 30mins. The property consists widely of pasture land but also has some wooded acreage in the northern section of the property. There is also a metal building with living quarters, two pole sheds, and equipment shed located on the property as well. Septic and well are also in place making it the perfect place to build your new dream home. Perfect for hunting, camping, trail rides and hikes... a true refuge for wildlife such as deer, duck, turkeys and more! You can easily make this place your new home, weekend retreat, venture property...the possibilities are endless. Let us know if you have interest in this fine tract and we will make arrangements to show you the property. 912.764.LAND(5263)



Price: \$785,384

Property Type: Land

Status: Sold

Street/Address: 2910 Griffin Ferry Rd

City: Metter

State: Georgia

Zip code: 30439

County: candler

Acreage: 413

Per Acre Price: \$1,900.00

Phone Number: 912.764.LAND(5263)

Email: info@landanddrivers.com

Google Maps link: [View Larger Map](#)

Rolling Pastures

Published on Plantation Properties & Land Investments, LLC (<https://www.landandrivers.com>)



Rolling Pastures

Published on Plantation Properties & Land Investments, LLC (<https://www.landanddrivers.com>)



PLANTATION PROPERTIES & LAND INVESTMENTS, LLC

1207 Jernigan's Way, Suite 101 | Statesboro, GA 30450
919.764.1AND | 707% | 706.726.5633

Jason Williams

This document is not to be retransmitted or duplicated

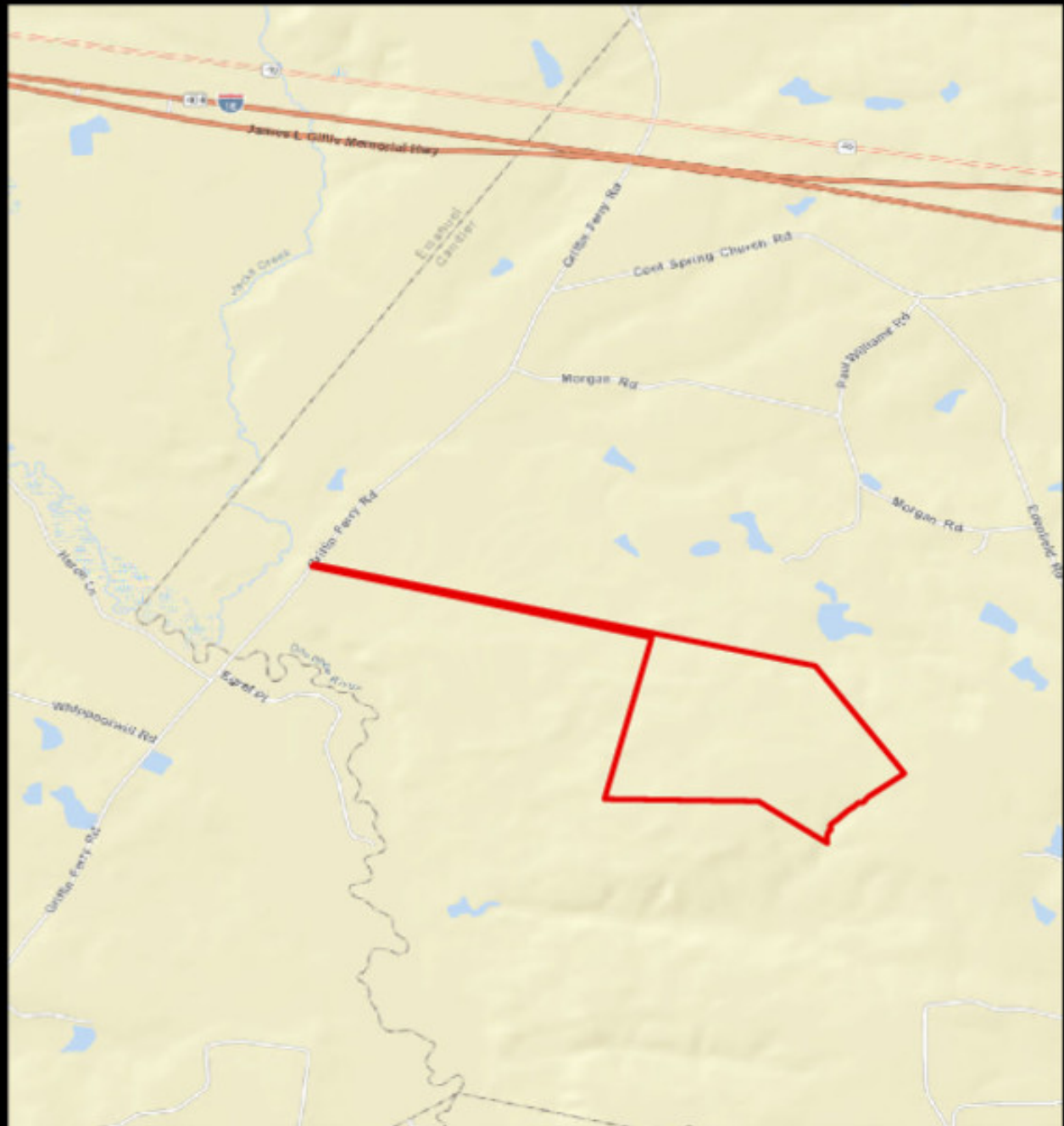
www.LandandDrivers.com

© 2012



Rolling Pastures

Published on Plantation Properties & Land Investments, LLC (<https://www.landanddrivers.com>)



PLANTATION PROPERTIES & LAND INVESTMENTS, LLC

1207 Merchants Wharf, Suite 101 | Statesboro, GA 30458
919 3641 AND | 706 726 5633

Jason Williams

This document is not to be retransmitted or duplicated

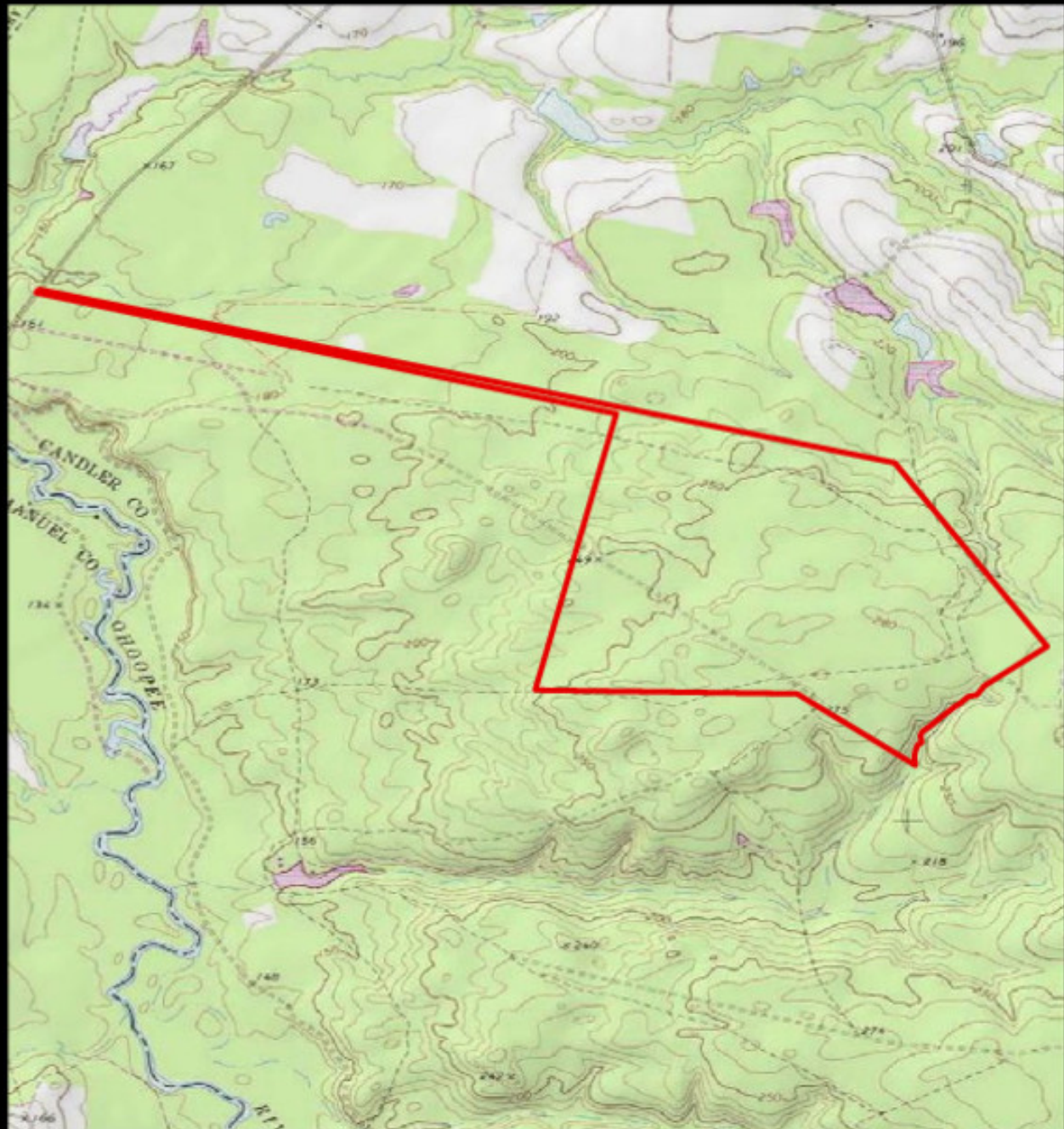
www.LandandDrivers.com

© 2012



Rolling Pastures

Published on Plantation Properties & Land Investments, LLC (<https://www.landanddrivers.com>)



PLANTATION PROPERTIES & LAND INVESTMENTS, LLC

1207 Jernigan's Way, Suite 101 | Statesboro, GA 30459
919 264 1 AND 1707 | 706 226 5633

Jason Williams

This document is not to be retransmitted or duplicated

www.landanddrivers.com

© 2012



Source URL: <https://www.landanddrivers.com/property/rolling-pastures>