



Chapel Hill Farms

Chapel Hill Farms is a beautiful 143+/- acre farm featuring over 68+/- acres of cultivated farm land with the surrounding acreage in natural hardwood regeneration. A Perfect multi-use property! This tract would be a great investment opportunity for any buyer. This farm's original home place sits nestled in the center of this charming little parcel of land. With a well, power, and more already in place you could easily make this farm your new home site, weekend retreat or venture property. Enjoy farming, hunting, camping and more all on your own land. Call Jason Today! 912.764.LAND(5263)



Price: \$235,000

Property Type: Land

Status: Sold

Street/Address: 3rd chapel rd

City:

State: Georgia

Zip code: 30830

County: burke

Acreage: 143

Per Acre Price: \$1,643.00

Phone Number:

Email:

Google Maps link: [View Larger Map](#)

Chapel Hill Farms

Published on Plantation Properties & Land Investments, LLC (<https://www.landandrivers.com>)



Aerial



PLANTATION PROPERTIES & LAND INVESTMENTS, LLC

1207 Morrisville Way, Suite 101 | Morrisville, GA 30458

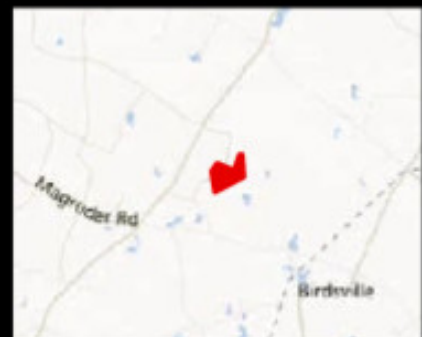
912.766.LAND (5253) | 706.726.5930

Jason Williams

This document is not to be distributed or duplicated

www.LandandDrivers.com

© 2012





**PLANTATION PROPERTIES
&
LAND INVESTMENTS, LLC**

1207 Merriam St., Suite 101 | Stockton, CA 95210

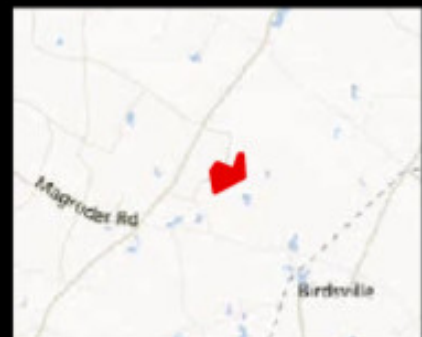
912.766.LAND (5253) | 706.726.5930

John Williams

This document is not to be used or duplicated

www.LandAndDrivers.com

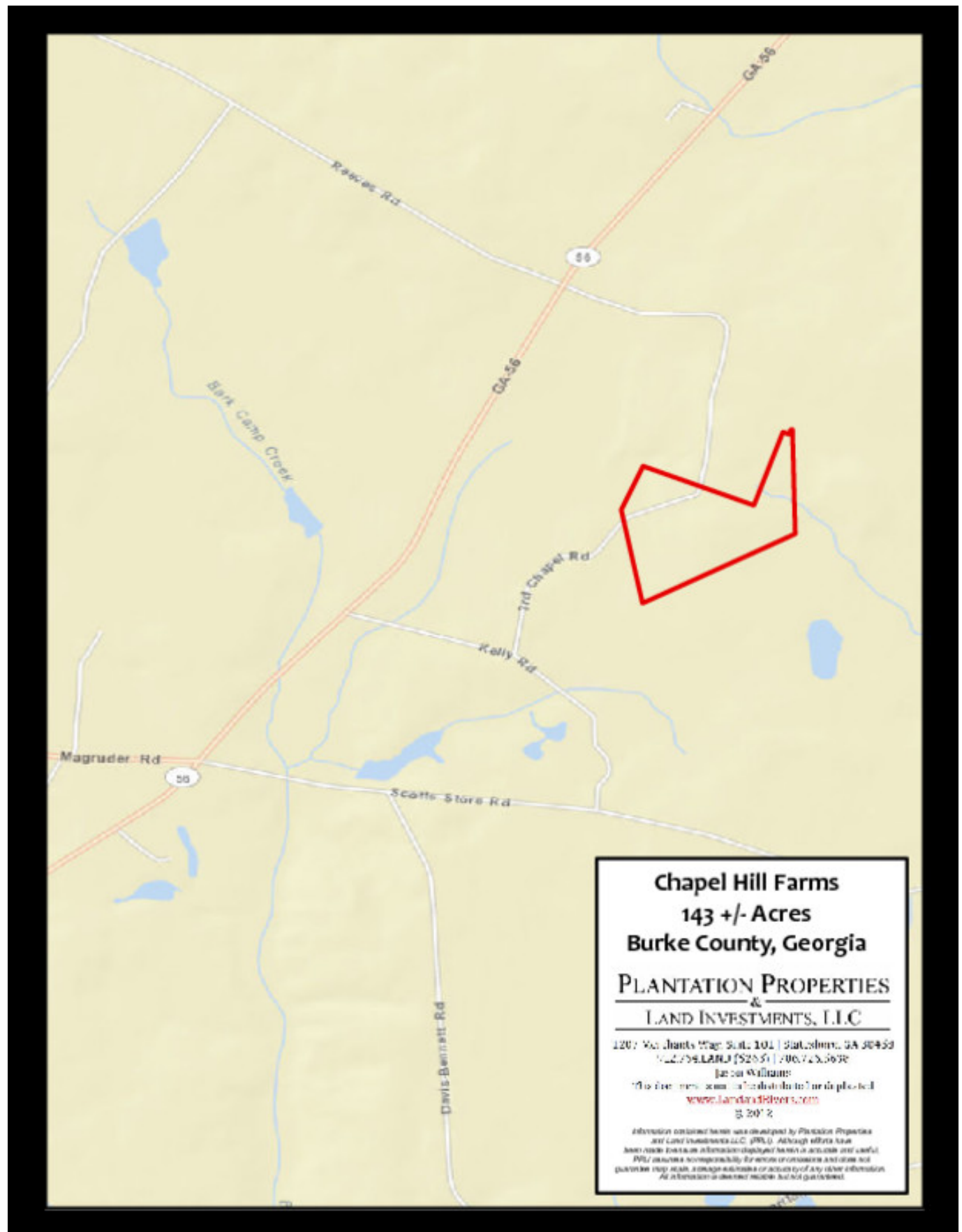
© 2012



Location

Chapel Hill Farms

Published on Plantation Properties & Land Investments, LLC (<https://www.landanddrivers.com>)



Source URL: <https://www.landanddrivers.com/property/chapel-hill-farms>