



Bishop Chapel

Located in Emanuel County on Bishop Chapel Road. Just down the road from Flat Creek Hunting Lodge. The timber was recently harvested approximately 3 years ago and has not been replanted. This property is a total of 101±acs and would make a great hunting tract, home site, weekend retreat or venture property. Let us know if you have interest in this tract and we will be happy to show you the property. 912.764.LAND(5263)



Price: \$124,000

Property Type: Land

Status: Sold

Street/Address: 0 Bishop Chapel Church Rd

City: Swainsboro

State: Georgia

Zip code: 30401

County: emanuel

Acreage: 101

Per Acre Price: \$0.00

Phone Number: 912.764.LAND(5263)

Email: info@landanddrivers.com

Google Maps link: [View Larger Map](#)

Bishop Chapel

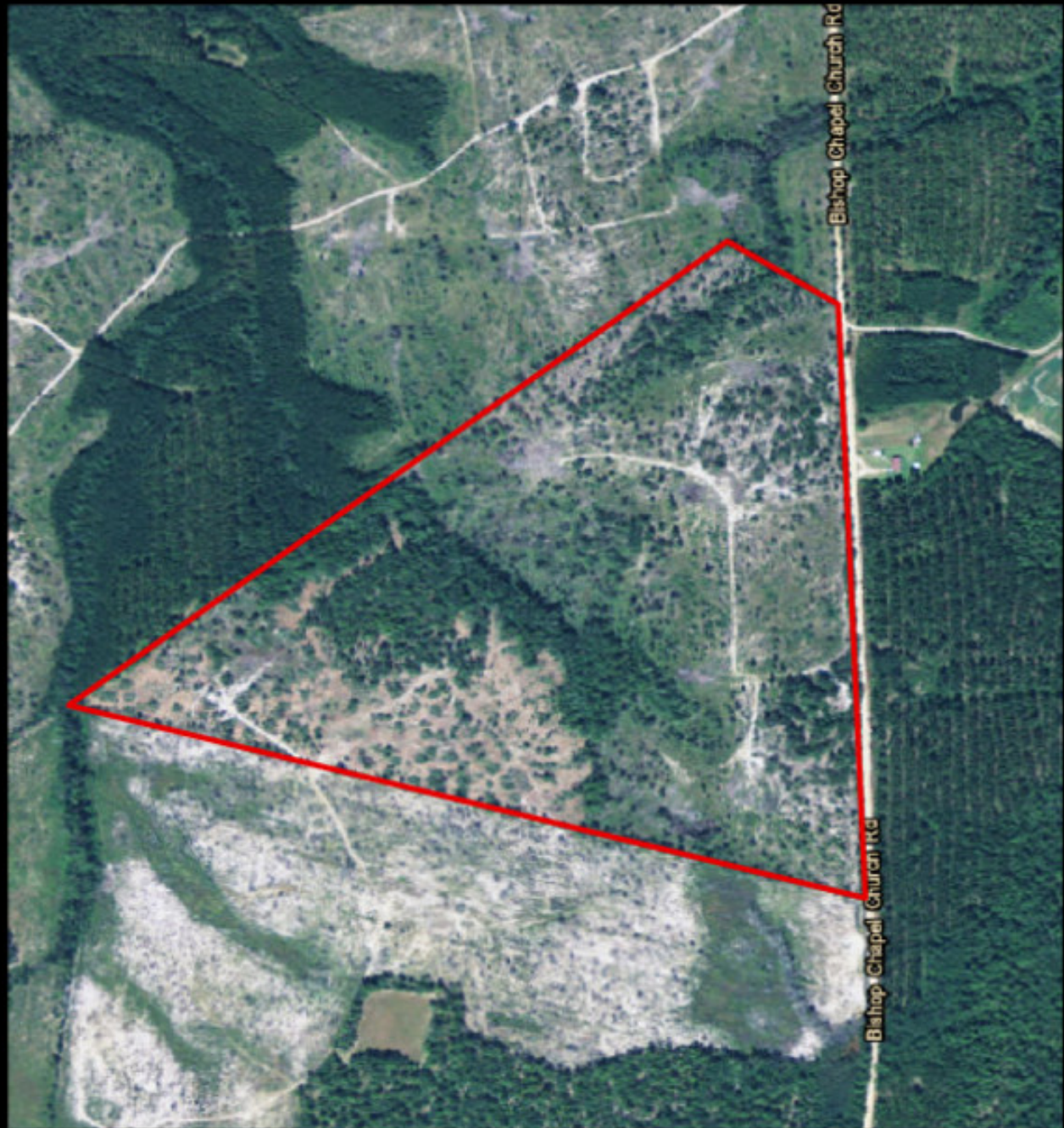
Published on Plantation Properties & Land Investments, LLC (<https://www.landanddrivers.com>)



Aerial Map

Bishop Chapel

Published on Plantation Properties & Land Investments, LLC (<https://www.landanddrivers.com>)



PLANTATION PROPERTIES & LAND INVESTMENTS, LLC

1207 Jernigan's Way, Suite 101 | Statesboro, GA 30458
919.764.1480 | 706.726.5633

Jason Williams

This document is not to be retransmitted or duplicated

www.LandandDrivers.com

© 2017



Location Map

Bishop Chapel

Published on Plantation Properties & Land Investments, LLC (<https://www.landanddrivers.com>)



PLANTATION PROPERTIES & LAND INVESTMENTS, LLC

1207 Jernigan's Way, Suite 101 | Statesboro, GA 30459
919 364 1 AND | 706 726 5633

Jason Williams

This document is not to be retransmitted or duplicated

www.LandandDrivers.com

© 2012



Source URL: <https://www.landanddrivers.com/property/bishop-chapel>