



Hunter's Retreat

Nice land at a great price! Hunting/Timber/Wildlife Retreat in Screven County. This 84± acre tract has plenty to offer. Located between Guyton and Cooperville off Highway 17 North. Only an hour from Savannah or 20mins from Statesboro, GA. A great multi-use property, perfect for an investment tract. The property is mostly all wooded with planted pines, hardwoods and a small open area. There are roads and trails throughout the property allowing you access all over the tract. This place is also loaded with deer, duck and turkey signs and has excellent habitat for the wildlife. This property would make a great recreational tract to enjoy hunting, trail rides, camping and more. Or build your dream home in the country. A MUST SEE!!! Call Jason Today! 912.764.LAND(5263)



Price: \$160,000

Property Type: Land

Status: Sold

Street/Address: 0 Effingham Hwy

City: Sylvania

State: Georgia

Zip code: 30467

County: screven

Acreage: 84

Per Acre Price: \$0.00

Phone Number: 912.764.LAND(5263)

Email: info@landanddrivers.com

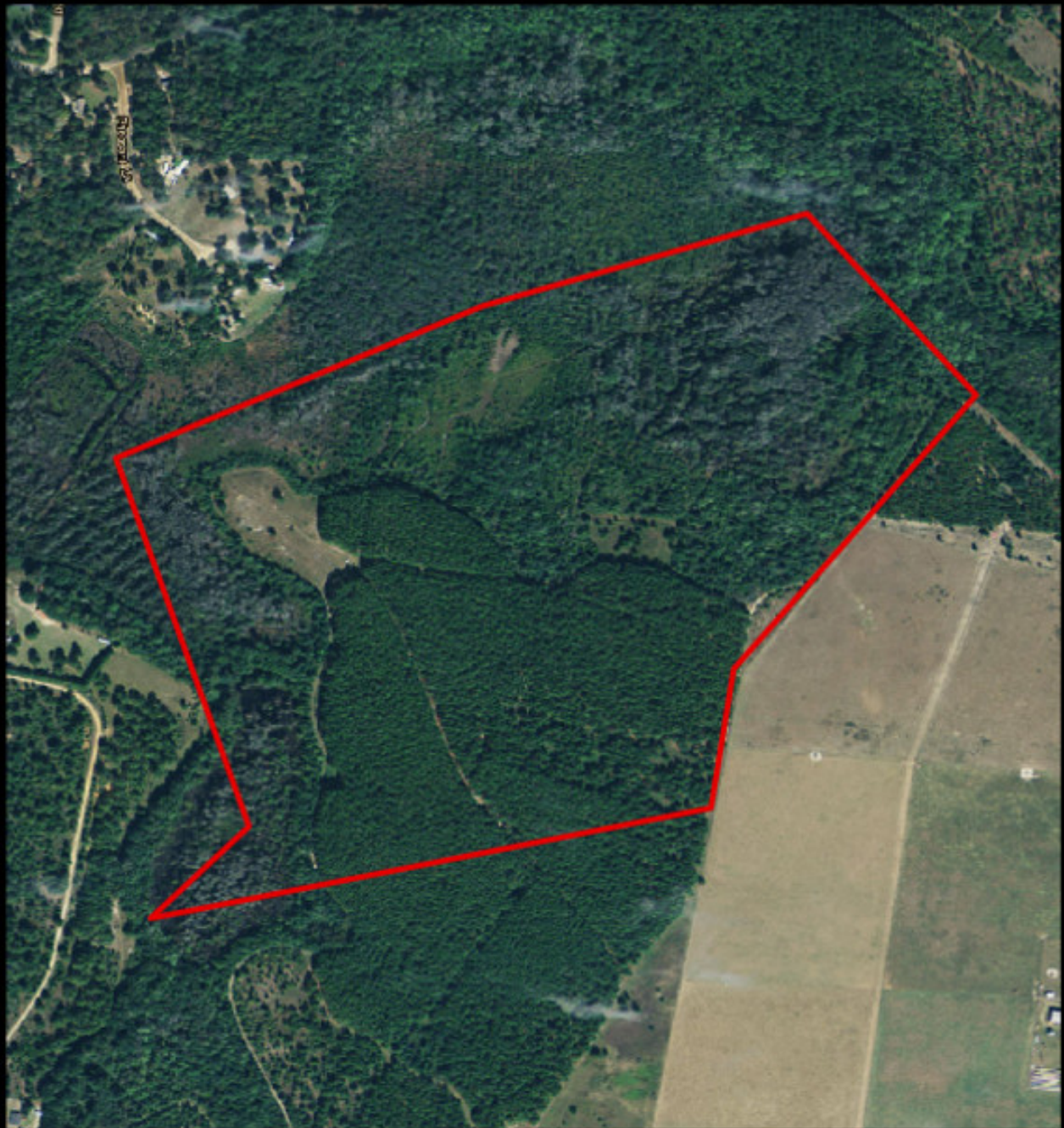
Google Maps link: [View Larger Map](#)

Hunter's Retreat

Published on Plantation Properties & Land Investments, LLC (<https://www.landandrivers.com>)



Aerial Map



PLANTATION PROPERTIES & LAND INVESTMENTS, LLC

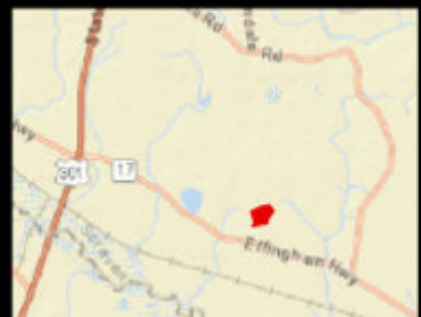
1207 Jernigan's Way, Suite 101 | Statesboro, GA 30458
919 2641 AND | 707's | 706 226 5633

Jason Williams

This document is not to be reproduced or duplicated

www.landanddrivers.com

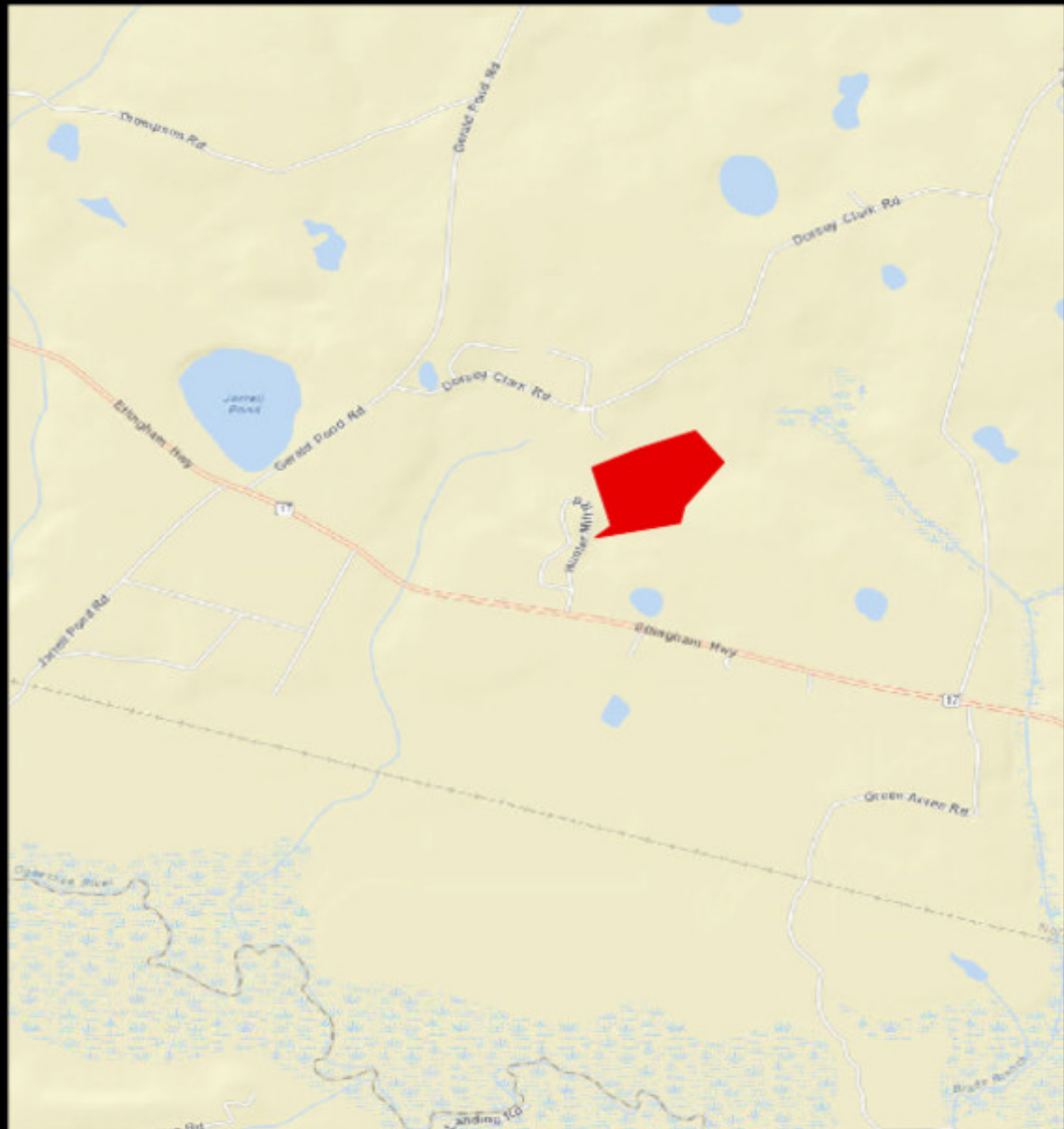
© 2012



Location Map

Hunter's Retreat

Published on Plantation Properties & Land Investments, LLC (<https://www.landanddrivers.com>)



PLANTATION PROPERTIES & LAND INVESTMENTS, LLC

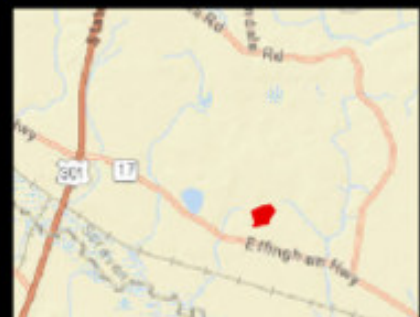
1207 Merchants Wharf, Suite 101 | Statesboro, GA 30459
919 2641 AND | 706 726 5633

Jason Williams

This document is not to be retransmitted or duplicated

www.LandandDrivers.com

© 2012



Source URL: <https://www.landanddrivers.com/property/hunters-retreat>