



145±acs | Springhead Road

Bank Owned! 150± Acres with beautiful log home in Screven Co. A nice versatile property! Located south of Sylvania off Highway 301 on Springhead Road. This property features natural wooded land, open land, planted pines and a lovely log home. Deer, duck and turkey are a common sight on this property which is not surprising with this mix of diversity and natural habitat. A great tract for someone as a wonderful country home or as a personal recreational property. The home is 2,311 square feet with 3 bedroom and 3 bathrooms and was built in 2008. A great open floor plan with stone fireplace, two-story vaulted great room, beautiful pine walls throughout and much more! The rustic charm of this house is perfect for the wooded acreage it sits on. This property would make for a nice investment, home place, weekend retreat, acreage tract or hunting/recreational land. Property is in a good location, less than 30 min from Statesboro, GA or only a little over an hour from Savannah, GA. Bank-owned property. Call Jason Williams for more information on this property. (912)764-LAND (5263)



Price: \$420,000

Property Type: Bank-Owned

Status: Sold

Street/Address: 559 Springhead Road

City: Sylvania

State: Georgia

Zip code: 30467

County: screven

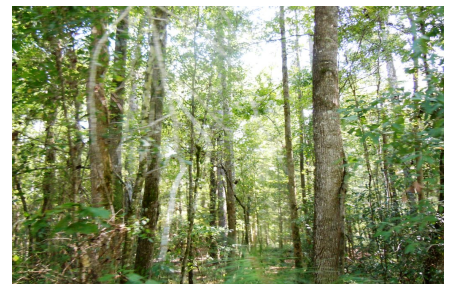
Acreage: 145

Per Acre Price: \$0.00

Phone Number: 912.764.5263(LAND)

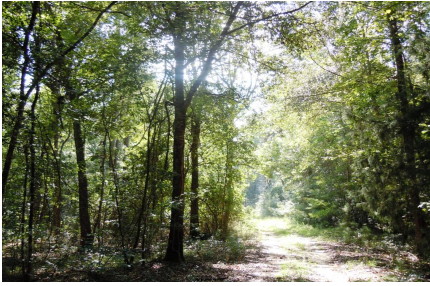
Email: info@landanddrivers.com

Google Maps link: [View Larger Map](#)

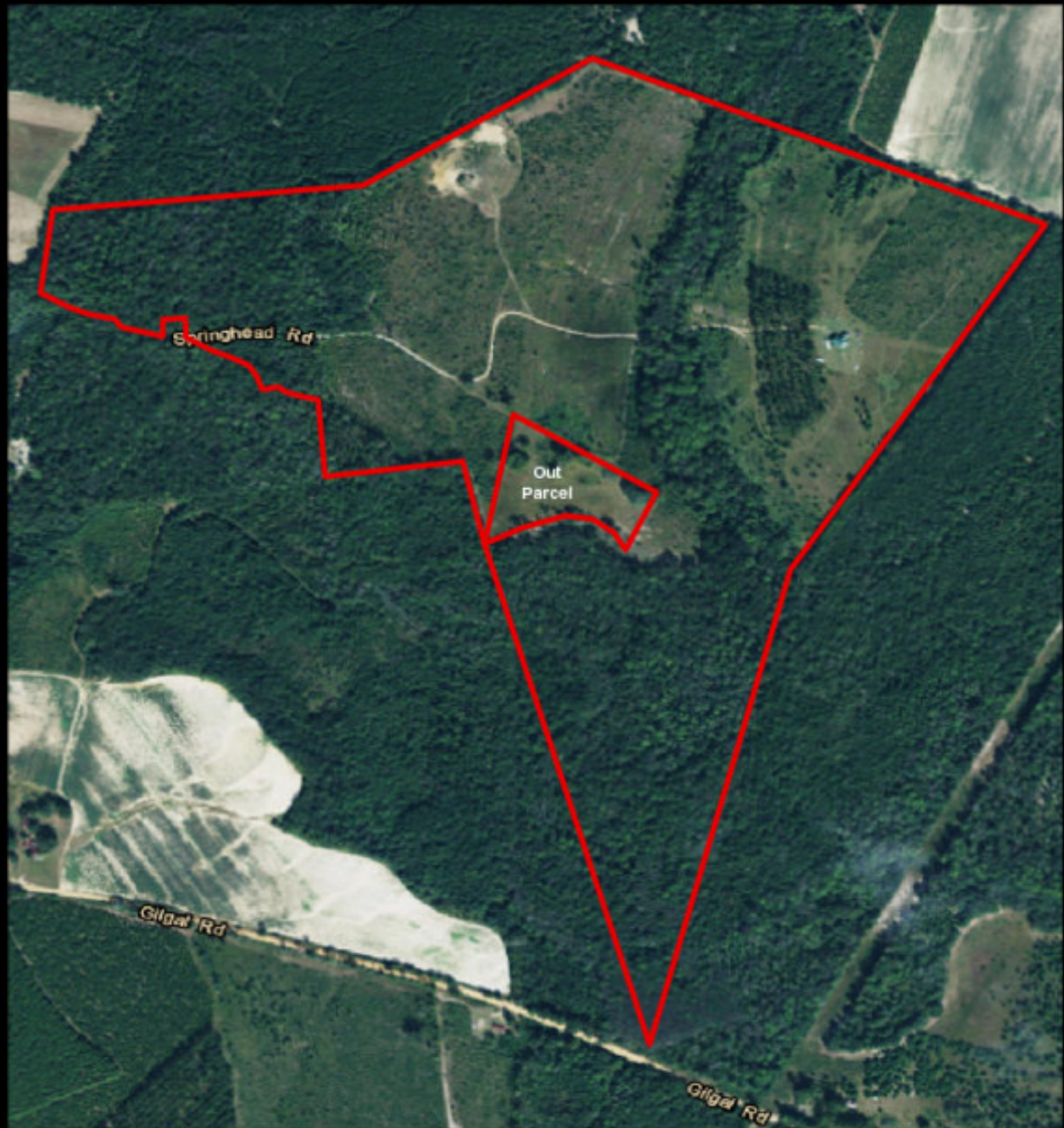


145±acs | Springhead Road

Published on Plantation Properties & Land Investments, LLC (<https://www.landandrivers.com>)



Aerial Map



**PLANTATION PROPERTIES
&
LAND INVESTMENTS, LLC**

1207 Jernigan's Way, Suite 101 | Statesboro, GA 30459
919.764.1480 | 706.726.5633

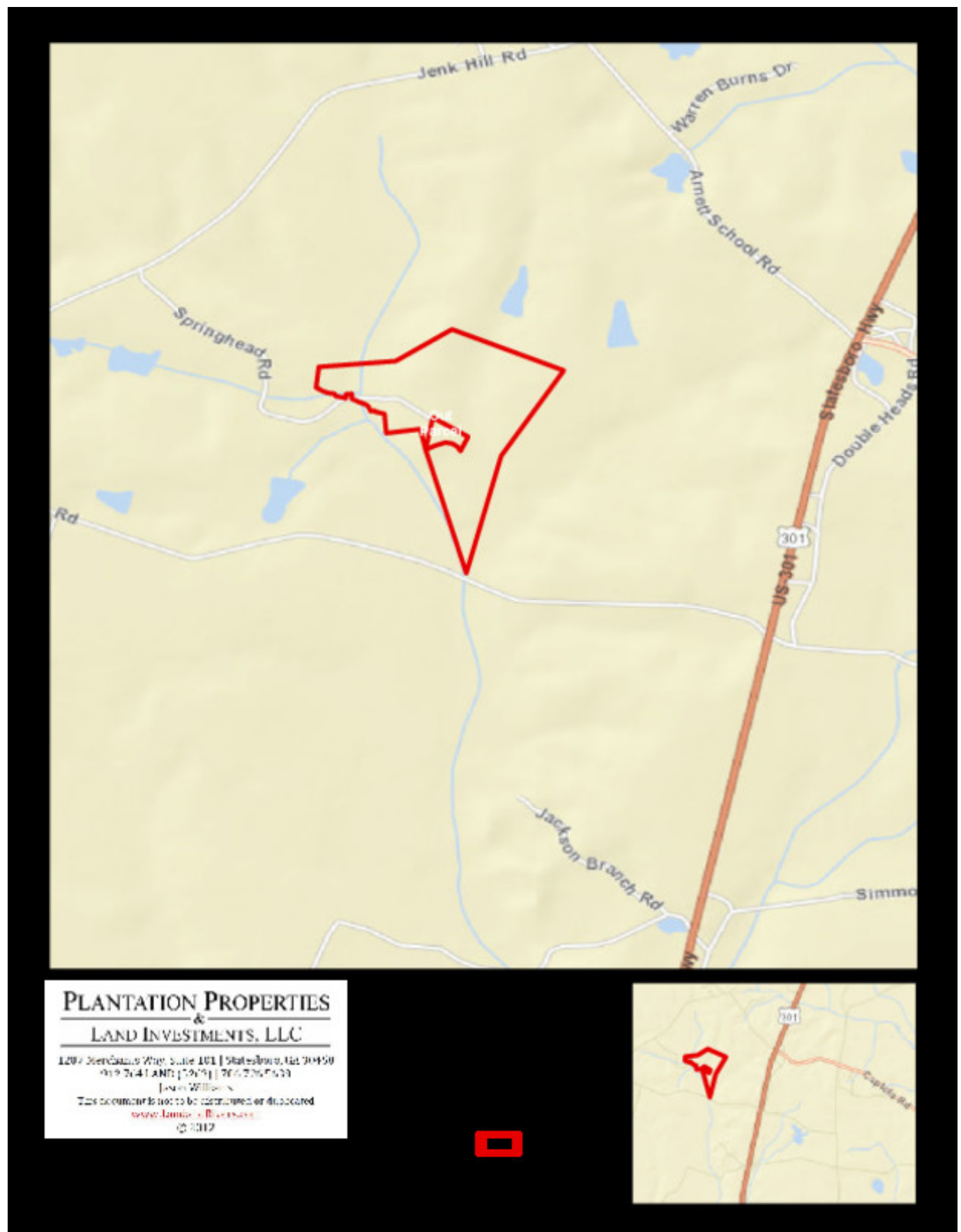
Jason Williams

This document is not to be reproduced or duplicated
www.landanddrivers.com

© 2012



Location Map



Source URL: <https://www.landanddrivers.com/property/145%C2%B1acs-springhead-road>