



Willow Pond

Willow Pond is a beautiful 58± acre country retreat, located in Sylvania, Georgia on Ogeechee Road in Screven County. Only 30 minutes from Statesboro and about an hour from Savannah, GA. The calm serenity of Willow pond is just right for those seeking to relax from all the hustle and bustle and enjoy a stunning outdoor get-a-way with lots of extra amenities. This property features a stunning 5 acre pond, wooded land and a charming 2,647sqft home with 3 bedroom, 3 bathrooms and a 2 car garage. The home features a nice eat-in kitchen with built-in desk and storage, dining room, living room, den/study w/ built-in media and bookcases, a master suite with ensuite bathroom and walk-in closet, a second bedroom w/ full bath and nice laundry also including built-ins. Upstairs is a third bedroom and full bathroom and walk-in attic storage. All this overlooking a beautiful pond and nestled amongst mature hardwoods. Outside you can enjoy the beautiful landscaping along the driveway and home. Relax by the fire pit on the banks of the pond with underground lighting and stereo system. Go boating or fishing or stroll across to the island and gazebo on the pond on the lovely arched wooden bridge. Deer, duck and turkey are a common sight on this property which is not surprising with the mix of diversity and natural habitat. There are mature hardwoods to the front and pine plantation to the back of this tract with trails everywhere so you can enjoy meandering throughout the property. Willow Pond is a true retreat providing a home, a pond, wooded acreage, tranquility, spacious living, abundant wildlife and a way of life you can truly enjoy. This one is definitely a MUST SEE, let us know if you would like to view this property. Call or Email us at 912.764.5263(LAND) or info@landanddrivers.com Note* there are 2 - 4" wells on the property. The house is being sold with most of furnishings included. Other items are negotiable.



Price: \$449,900

Property Type: Residential

Status: Sold

Street/Address: 1200 Ogeechee Rd

Willow Pond

Published on Plantation Properties & Land Investments, LLC (<https://www.landanddrivers.com>)

City: Sylvania

State: Georgia

Zip code: 30467

County: screven

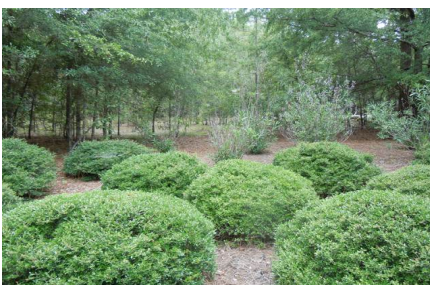
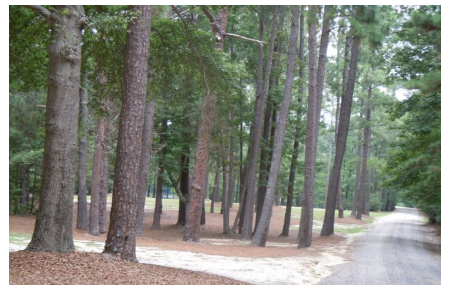
Acreage: 58

Per Acre Price: \$0.00

Phone Number: 912-764-5263

Email: info@landanddrivers.com

Google Maps link: [View Larger Map](#)



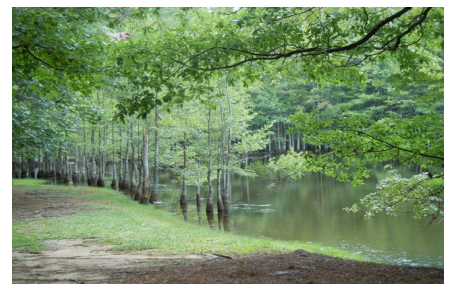
Willow Pond

Published on Plantation Properties & Land Investments, LLC (<https://www.landanddrivers.com>)



Willow Pond

Published on Plantation Properties & Land Investments, LLC (<https://www.landanddrivers.com>)



Willow Pond

Published on Plantation Properties & Land Investments, LLC (<https://www.landandrivers.com>)



Aerial Map

Willow Pond

Published on Plantation Properties & Land Investments, LLC (<https://www.landanddrivers.com>)



PLANTATION PROPERTIES & LAND INVESTMENTS, LLC

1207 Jernigan's Way, Suite 101 | Statesboro, GA 30450
919 2641 AND | 707 707 | 706 706 FAX

Jason Williams

This document is not to be retransmitted or duplicated

www.LandandDrivers.com

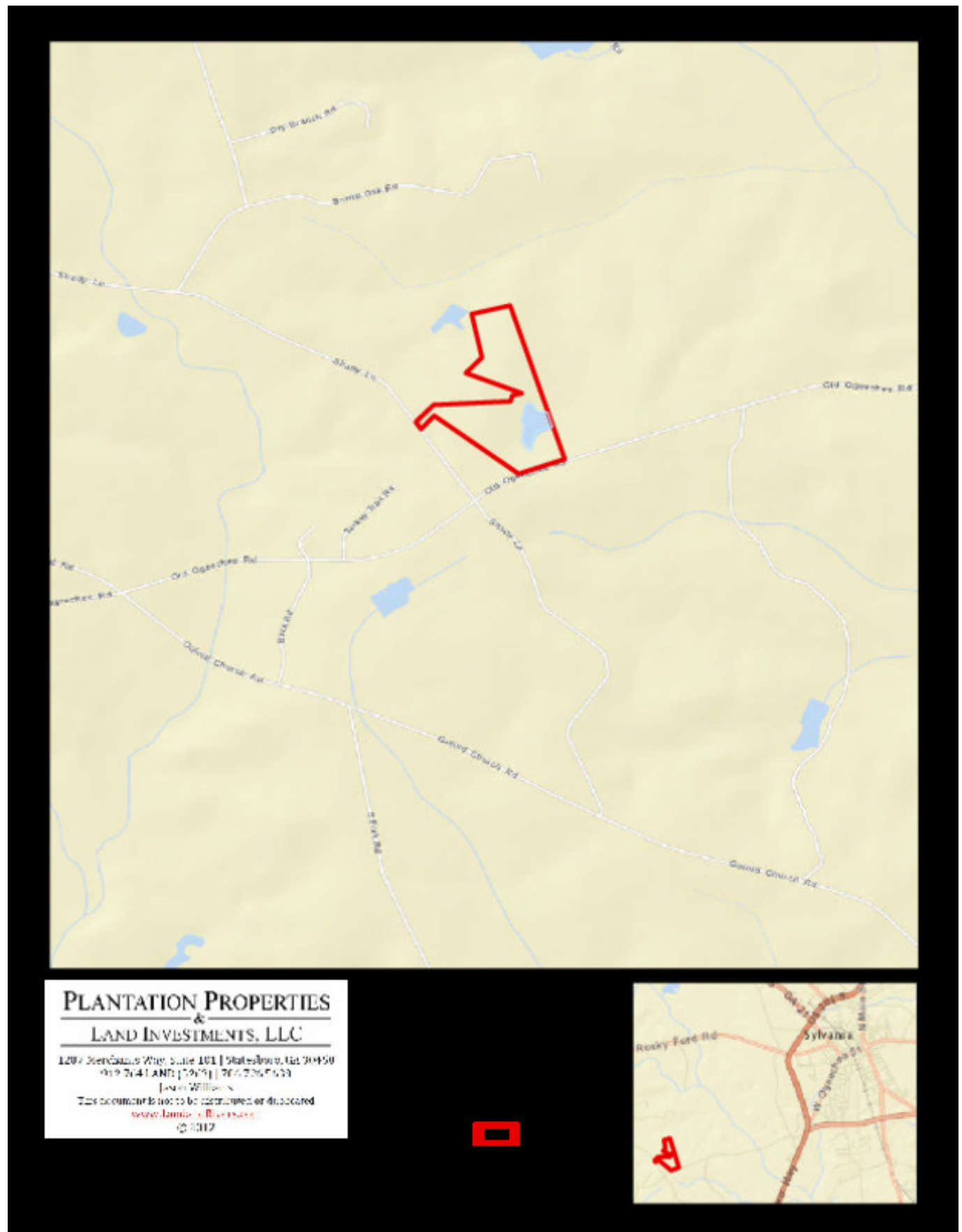
© 2012



Location Map

Willow Pond

Published on Plantation Properties & Land Investments, LLC (<https://www.landanddrivers.com>)



Source URL: <https://www.landanddrivers.com/property/willow-pond>