



Dragonfly Farms

JUST REDUCED!! A RARE FIND! Beautiful 30± acre farm with 1930's Farmhouse in desirable location! Dragonfly Farms is located just outside of Springfield, GA. Less than an hour from Savannah, GA or Bluffton, SC. This property features a charming 1930's Farmhouse that has been completely restored, a guest house with carport, a new shop and 2 barns. The land is mostly open with huge old oak trees scattered about the property and about 14± acres of cultivated acreage currently planted in peanuts. Some of the land is fenced and the remainder could easily be fenced and planted in grass for cattle and/or horses. This farm and farmhouse are a "MUST SEE" the original home has been completely refurbished with all new electrical, plumbing, windows, "red" tin roof, septic system, propane system and a new well pump.

The shabby chic style and massive gourmet kitchen is fully equipped with new state of the art appliances, including a European 48 inch range , a huge vintage 30's farmhouse sink, Italian carerra marble countertops, and a gorgeous 4x10 walnut butcher block island. All the cabinets were handcrafted using reclaimed lumber from the house. I can see lots of family gatherings in this spacious beautiful kitchen. There are two gorgeous new bathrooms with subway tile, rain showerheads and a stunning master ensuite. Three fireplaces with new gas logs. The attention to detail in this place is fantastic!

The guest house features a full living and kitchen area, with 3 office/bedrooms, a full bath room, attached carport and upstairs attic storage. There is also a brand new enclosed shop for storing and working on all your projects with open lean-to storage off the back as well as 2 other barns. A 6' mower is included. Also, a new survey of the land has been done.

This farm has endless possibilities. Ideal for a stunning hobby farm, horse farm, family home or a weekend get-a-way in the country. Let us know if you have an interest in this charming place and we will make arrangements to show you this property. Call or email us today 912.764.LAND(5263) or info@landanddrivers.com



Dragonfly Farms

Published on Plantation Properties & Land Investments, LLC (<https://www.landanddrivers.com>)

Price: \$375,000

Property Type: Land

Status: Sold

Street/Address: 1965 Stillwell Clio Rd

City: springfield

State: Georgia

Zip code: 31329

County: effingham

Acreage: 30

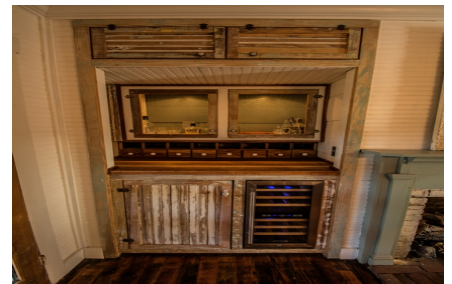
Per Acre Price: \$0.00

Phone Number: 912.764.LAND(5263)

Email: info@landanddrivers.com

Google Maps link: [View Larger Map](#)

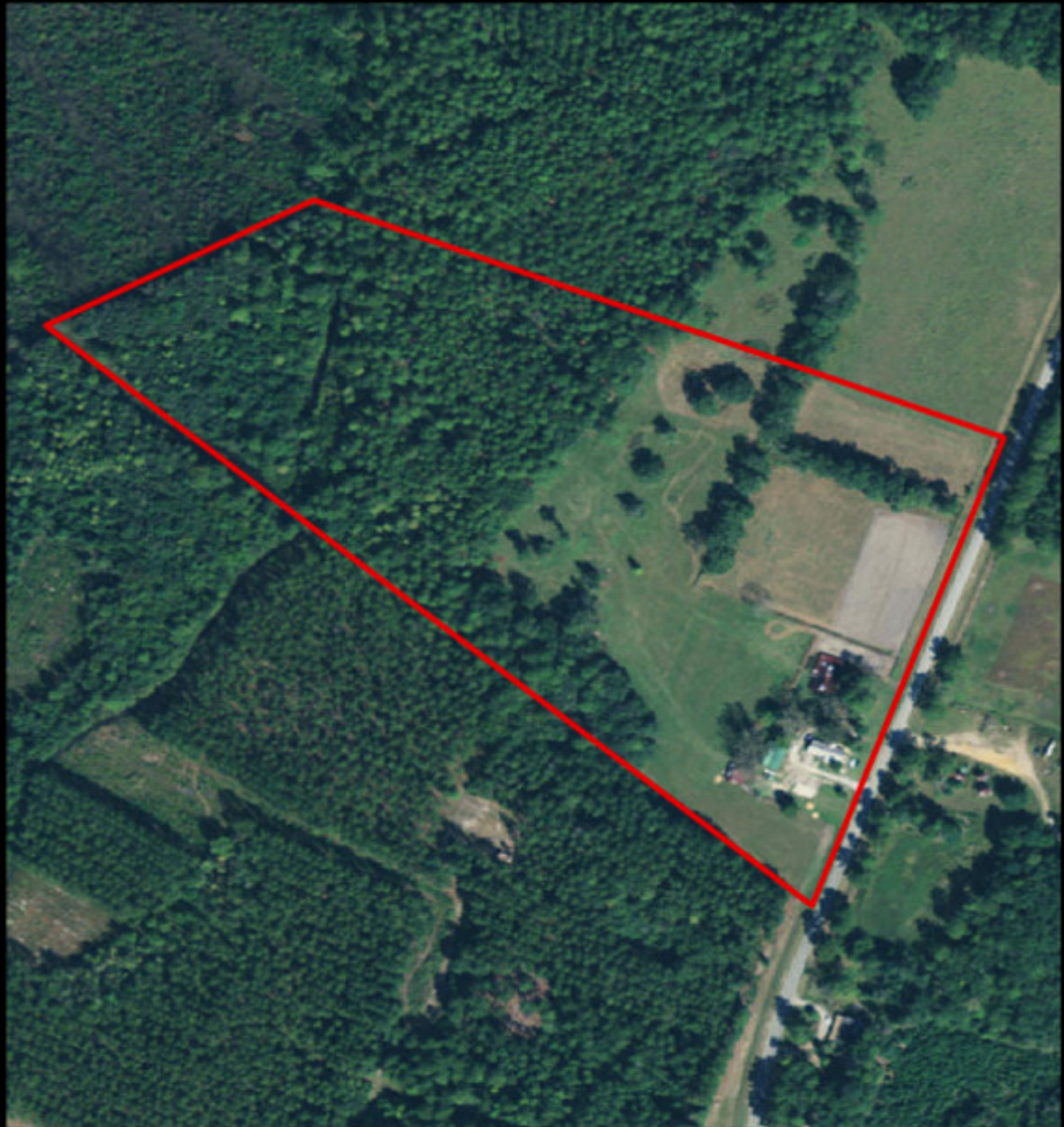








Aerial Map



**PLANTATION PROPERTIES
&
LAND INVESTMENTS, LLC**

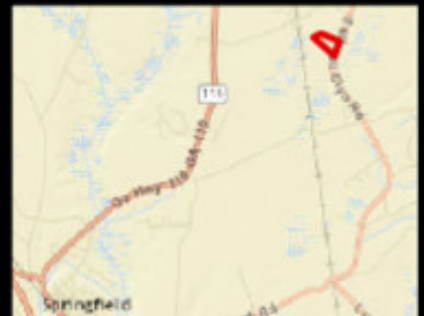
1207 Overdam's Way, Suite 101 | Statesboro, GA 30459
919.764.1AND | 706.726.5633

Jason Williams

This document is not to be retransmitted or duplicated

www.landanddrivers.com

© 2012



Source URL: <https://www.landanddrivers.com/property/dragonfly-farms>