



## Hudson Tract

The Hudson tract is a delightful 783± acre timber and recreational property located about 45mins southwest of Augusta, GA in Jefferson County. The property is located on Clarks Mill Road off HWY 88, only 10 minutes from both Louisville and Wrens. Truly a diverse and private retreat the Hudson Tract has it all. Managed with the utmost attention to wildlife and its habitat this tract is loaded with deer, turkey, dove and even coveys of wild quail are scattered about the property. The property itself consists mostly of timberland derived of upland and bottomland hardwood with a good mixture of merchantable and pre merchantable pine plantation including long leaf pines. A good road system allows you to meander about the property where you'll find a pond, two cultivated fields as well as many wildlife plots. To the ease the tract is bordered by Duharts Creek and along the frontage of Clarks Mill Road the property is fenced and gated. Other improvements on the property include two homes. The main home features 3bedrooms and 2 baths, stone fireplace, screened porch and more. The second home could be used as a caretaker's cabin or guest house. Additional improvements include two metal buildings – one 51' x 94' including a kitchen/dining area, the second – 38' x 48', a cooking pavilion, water and fire pit. This tract is truly unique in all its features as well as it being such a large single parcel. A perfect multi-use property that is turn-key and ready for the family to enjoy! The caretaker for this property has been there for 14 years and is willing to stay. Ideal for a sportsman's retreat, timber investment, weekend get-away in the country or a homeplace. The calm seclusion at this plantation is just right! Call or email us today for more detail or to see this farm 912.764.LAND!



**Price:** \$1,475,000

**Property Type:** Land

**Status:** Sold

**Street/Address:** 10700 Clarks Mill Rd

**City:** Louisville

## Hudson Tract

Published on Plantation Properties & Land Investments, LLC (<https://www.landanddrivers.com>)

---

**State:** Georgia

**Zip code:** 30434

**County:** jefferson

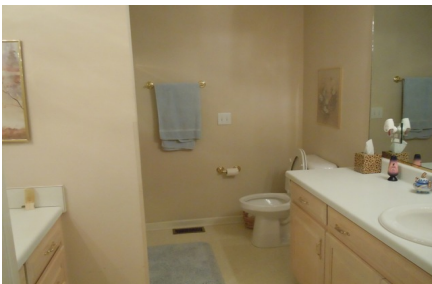
**Acreage:** 783

**Per Acre Price:** \$0.00

**Phone Number:** 912.764.LAND(5263)

**Email:** [info@landanddrivers.com](mailto:info@landanddrivers.com)

**Google Maps link:** [View Larger Map](#)

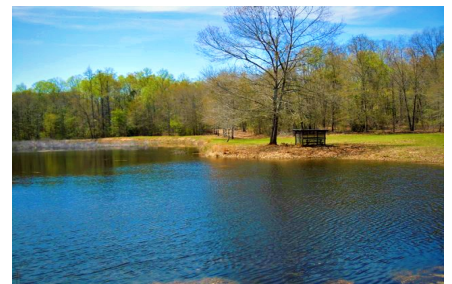




## Hudson Tract

Published on Plantation Properties & Land Investments, LLC (<https://www.landanddrivers.com>)

---





## Aerial Map



### PLANTATION PROPERTIES & LAND INVESTMENTS, LLC

1207 N. Hunt-Way, Suite 101 | Statesboro, GA 30458

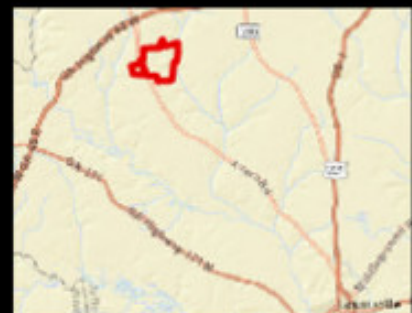
912.786.1470 (5253) | 706.776.5558

Justin Williams

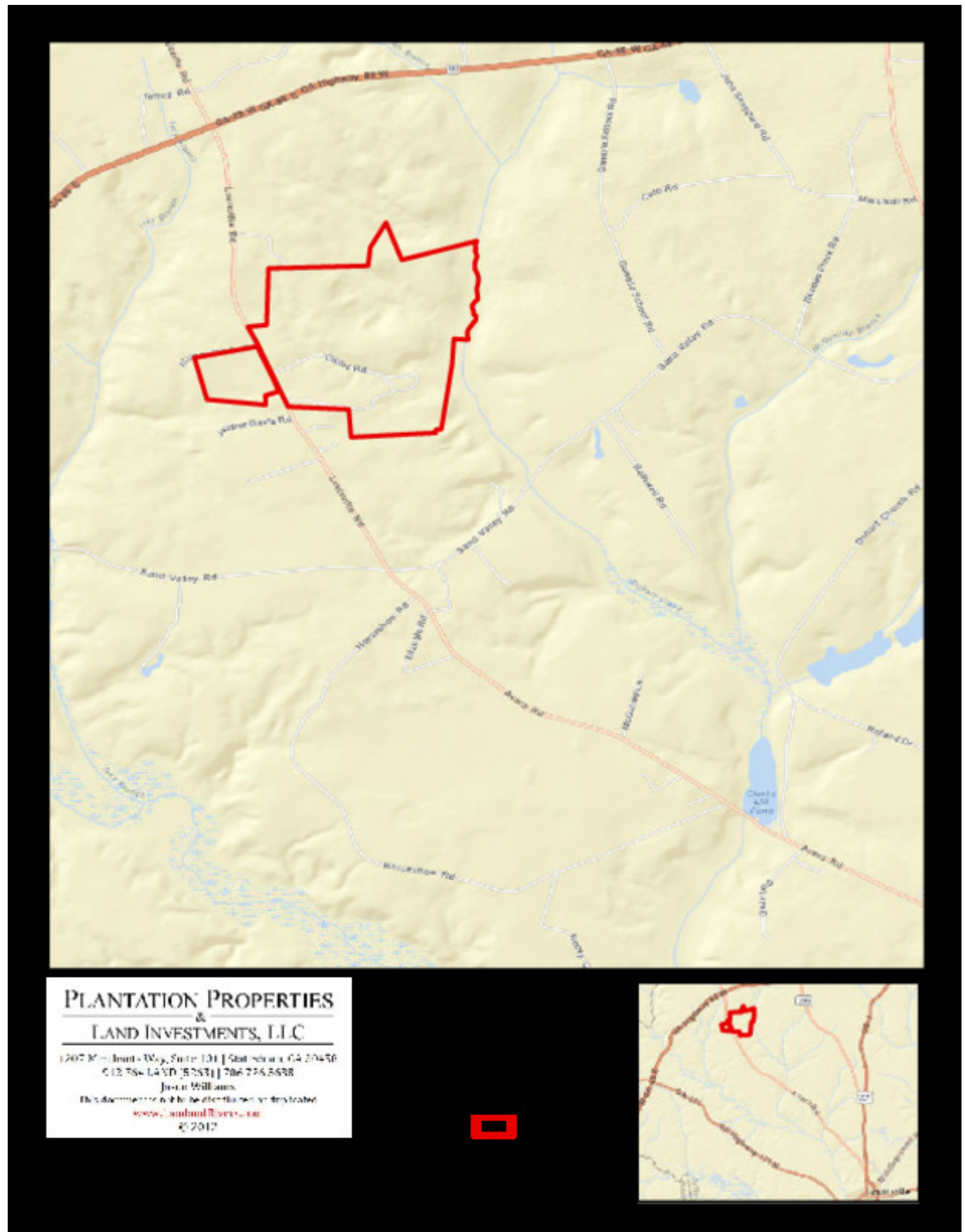
This document is not to be distributed or destroyed

[www.landanddrivers.com](https://www.landanddrivers.com)

© 2017

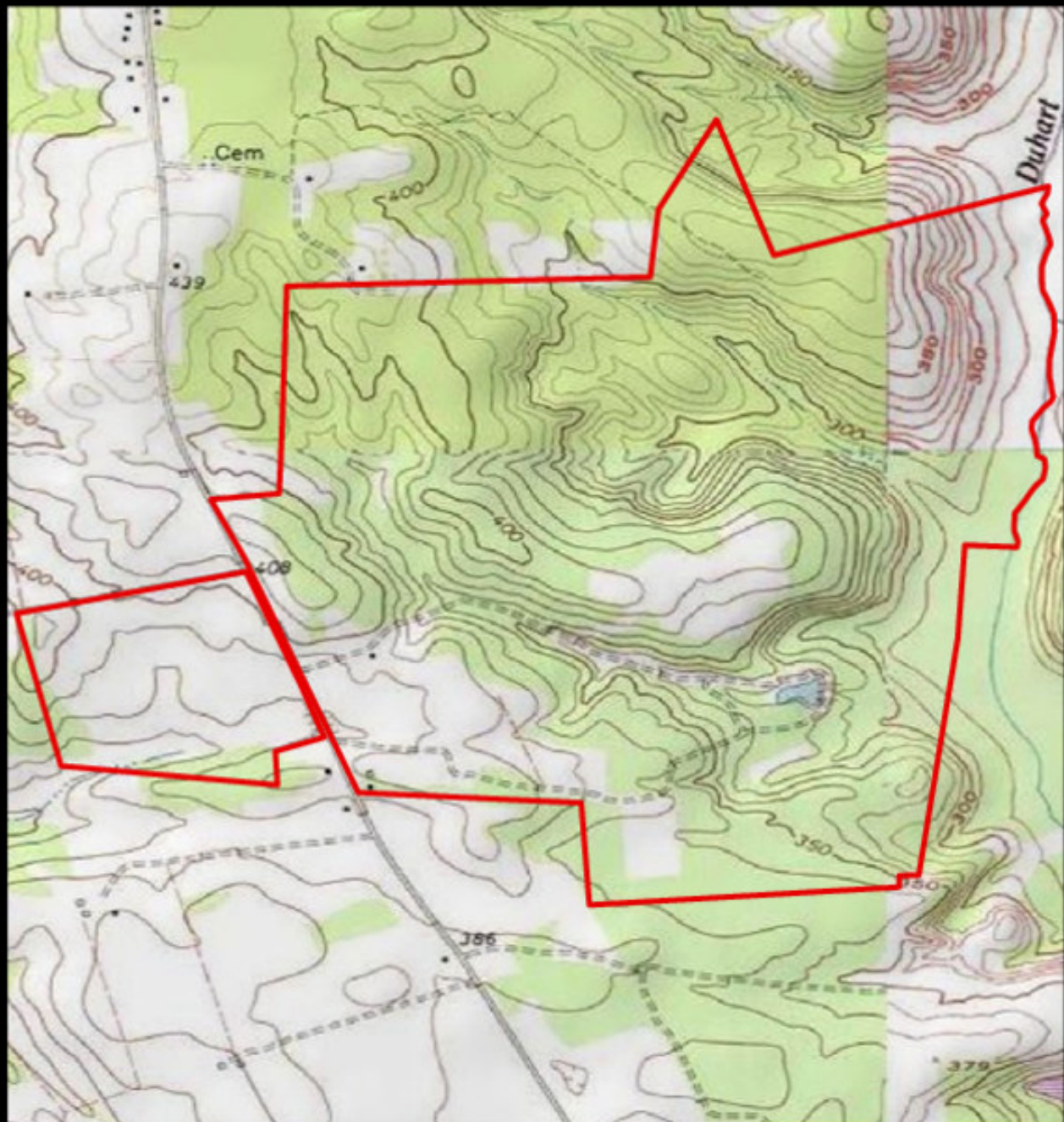


## Location Map





## Topo Map



**PLANTATION PROPERTIES  
&  
LAND INVESTMENTS, LLC**

1207 N. Hunt-Way, Suite 101 | Stateline, GA 30456

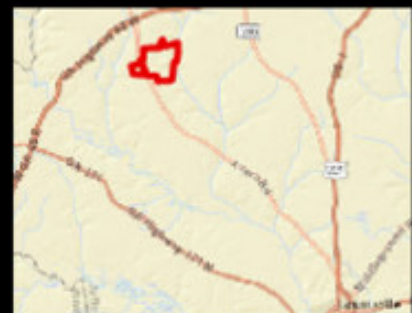
612.786.1470 (5253) | 706.776.5588

Justin Williams

This document is not to be distributed or displayed

[www.landandrivers.com](https://www.landandrivers.com)

© 2012



## **Hudson Tract**

Published on Plantation Properties & Land Investments, LLC (<https://www.landandrivers.com>)

---

**Source URL:** <https://www.landandrivers.com/property/hudson-tract>