



795±acs | Alma Woods

Alma Woods is an ideal timberland investment and recreational tract located in Alma, GA on Springfield Church Road. This 795± acre tract has excellent diversity with multiple age class pines plantation and some natural hardwood bottoms. This is a nice large tract and is surrounded by more timberland making a great habitat for deer and other wildlife. This area is well known for its high quality timberland presence and excellent hunting. Make this property your new timber investment, weekend retreat, home site or venture property. Located about 15 mins south of Baxley off HWY 23. Only 30 mins from Waycross, GA and 40 mins from Jesup, GA. Call Jason Today for more details on this timberland tract 912.764.LAND(5263)



Price: \$1,669,500
Property Type: Land
Status: Sold
Street/Address: Springfield Church Road
City: Alma
State: Georgia
Zip code: 31510
County: Bacon
Acreage: 795
Per Acre Price: \$2,100.00
Phone Number: 912.764.LAND(5263)
Email: jasonwilliams@landanddrivers.com
Google Maps link: [View Larger Map](#)

795±acs | Alma Woods

Published on Plantation Properties & Land Investments, LLC (<https://www.landanddrivers.com>)



Aerial Map



**PLANTATION PROPERTIES
&
LAND INVESTMENTS, LLC**

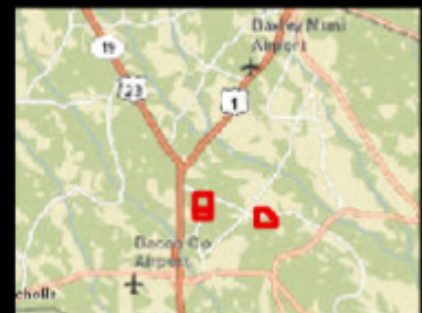
12174 Warden Rd, Suite 100 | Jacksonville, FL 32216
912.304.1611 | 706.725.5038

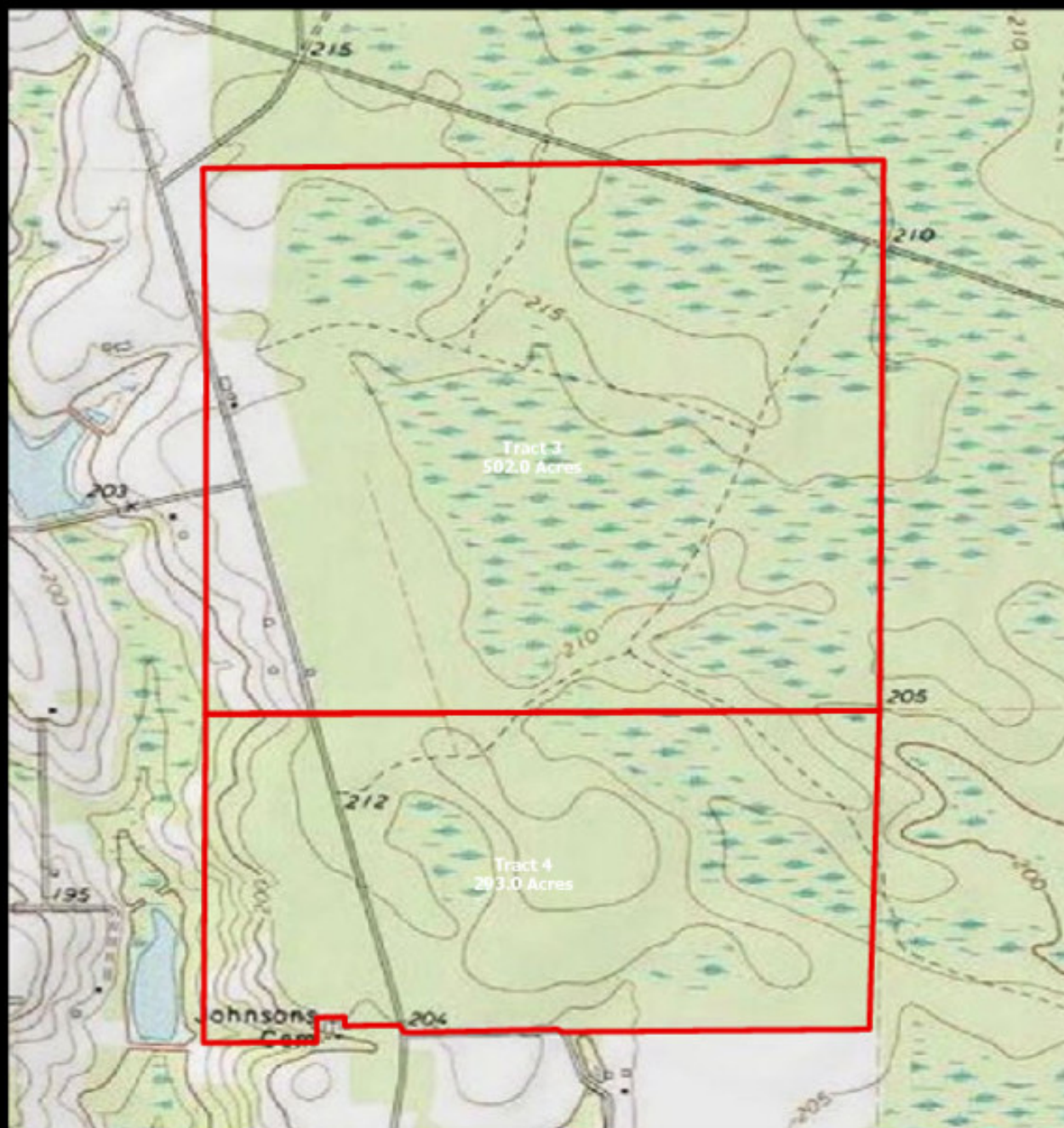
Jason Williams

This document is not to be distributed or duplicated

www.LandandDrivers.com

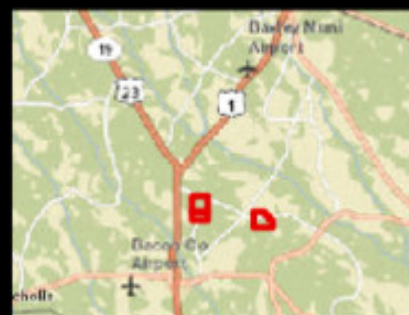
© 2019



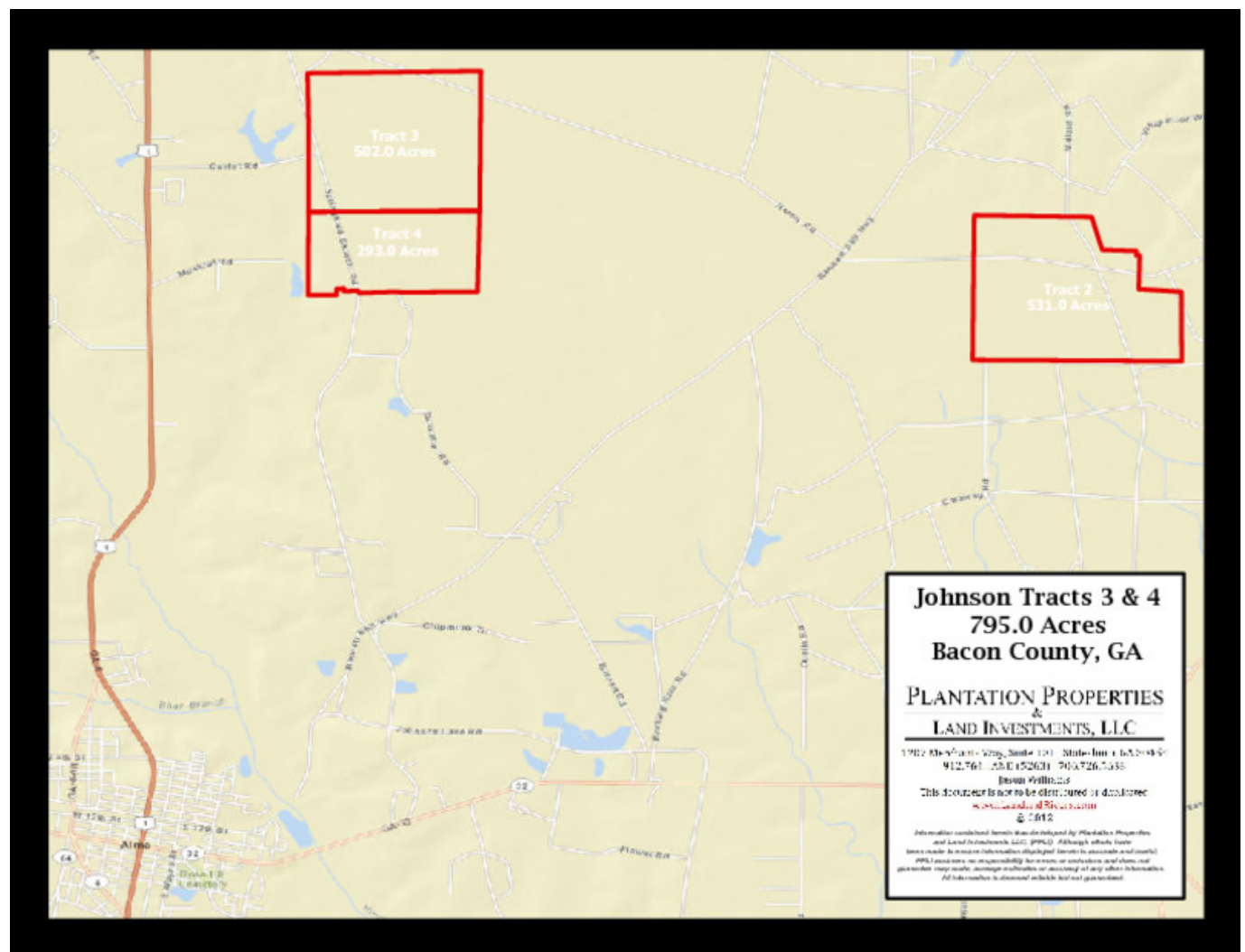


**PLANTATION PROPERTIES
&
LAND INVESTMENTS, LLC**

12174 Hardacre Way, Suite 100 | Savannah, GA 31906
912.364.1410 | (770) 706.725.5638
JASON WILLIAMS
This document is not to be distributed or duplicated
www.LandandDrivers.com
© 2019



Location Map



Source URL: <https://www.landanddrivers.com/property/795%C2%B1acs-alma-woods>