



546±acs | Durden Farms

Durden Farms is a true southern farm offering 546.8 acres of timber and farmland. A nice diverse tract that features hardwood, pine plantation, open cropland, several mature pecans and much more! This property consists widely of wooded acreage, including merchantable pine and hardwood. The wooded area totals approximately 393±acres. There is a good mixture of pine and hardwoods, the various ages of loblolly pine plantation ranging from 35 year to 16 year old with a small plot of 13 year old trees. The open acreage consists of about 149± acres and makes for nice variety on this farm as well as added forage for the abundant wildlife. Not only is this farm an excellent investment opportunity, but as a hunting/recreation property this tract is truly ideal. All the cropland is surrounded by forested acres and makes the perfect habitat for all sort of wild game. Deer, turkey, quail, ducks and more are all a common site on this farm. Located on Canoochee Bypass just northeast of Swainsboro, Ga in the small community of Garfield, GA. A Perfect multi-use property! Make this farm your new timber investment, weekend hunting retreat, home site or venture property. Enjoy hunting, trail rides, camping and more all on your own land. Let us know if you have interest in this excellent tract and we will make arrangements to show you this property.

912.764.LAND(5263)



Price: \$1,257,640

Property Type: Land

Status: Sold

Street/Address: Canoochee Bypass

City: Garfield

State: Georgia

Zip code: 30425

County: emanuel

Acreage: 546

546±acs | Durden Farms

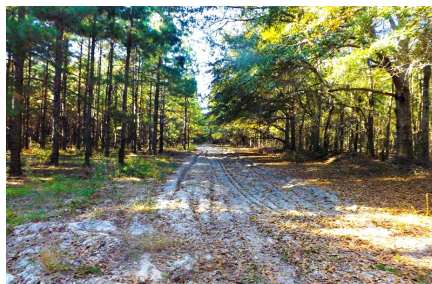
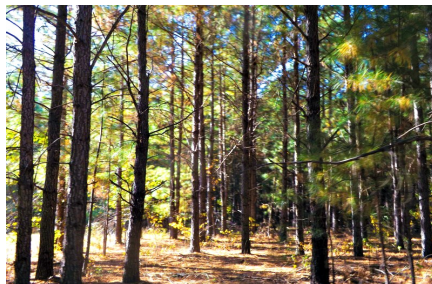
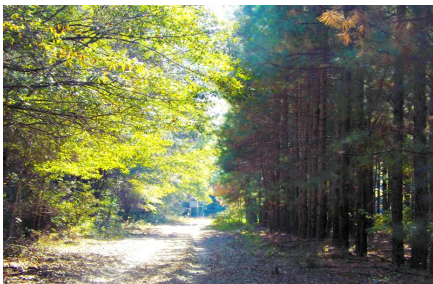
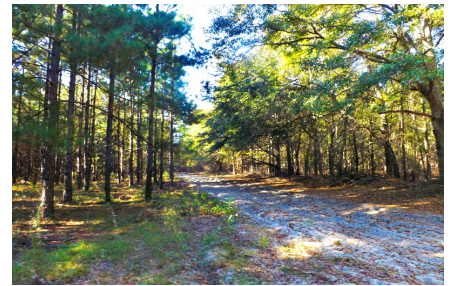
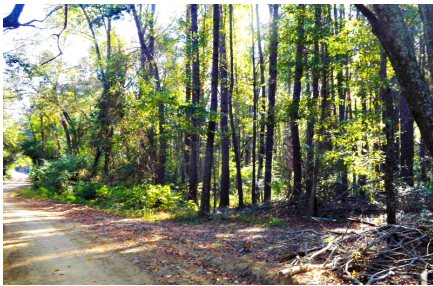
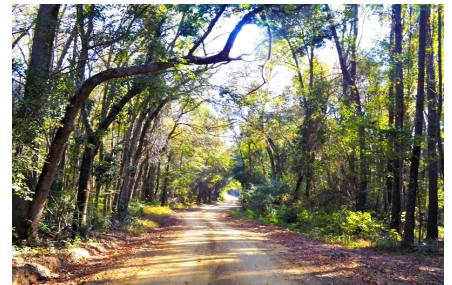
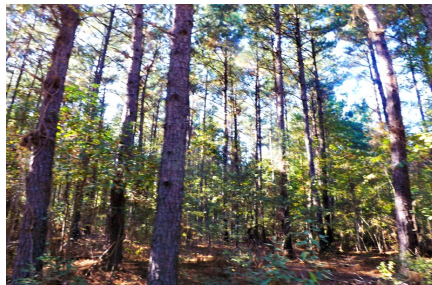
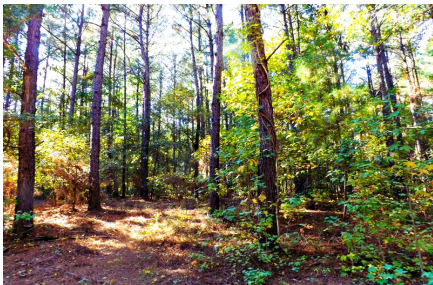
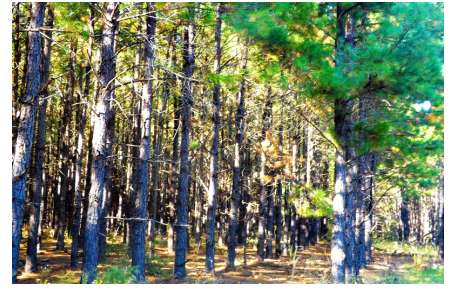
Published on Plantation Properties & Land Investments, LLC (<https://www.landanddrivers.com>)

Per Acre Price: \$2,300.00

Phone Number: 912.764.LAND(5263)

Email: jasonwilliams@landanddrivers.com

Google Maps link: [View Larger Map](#)



Aerial Map

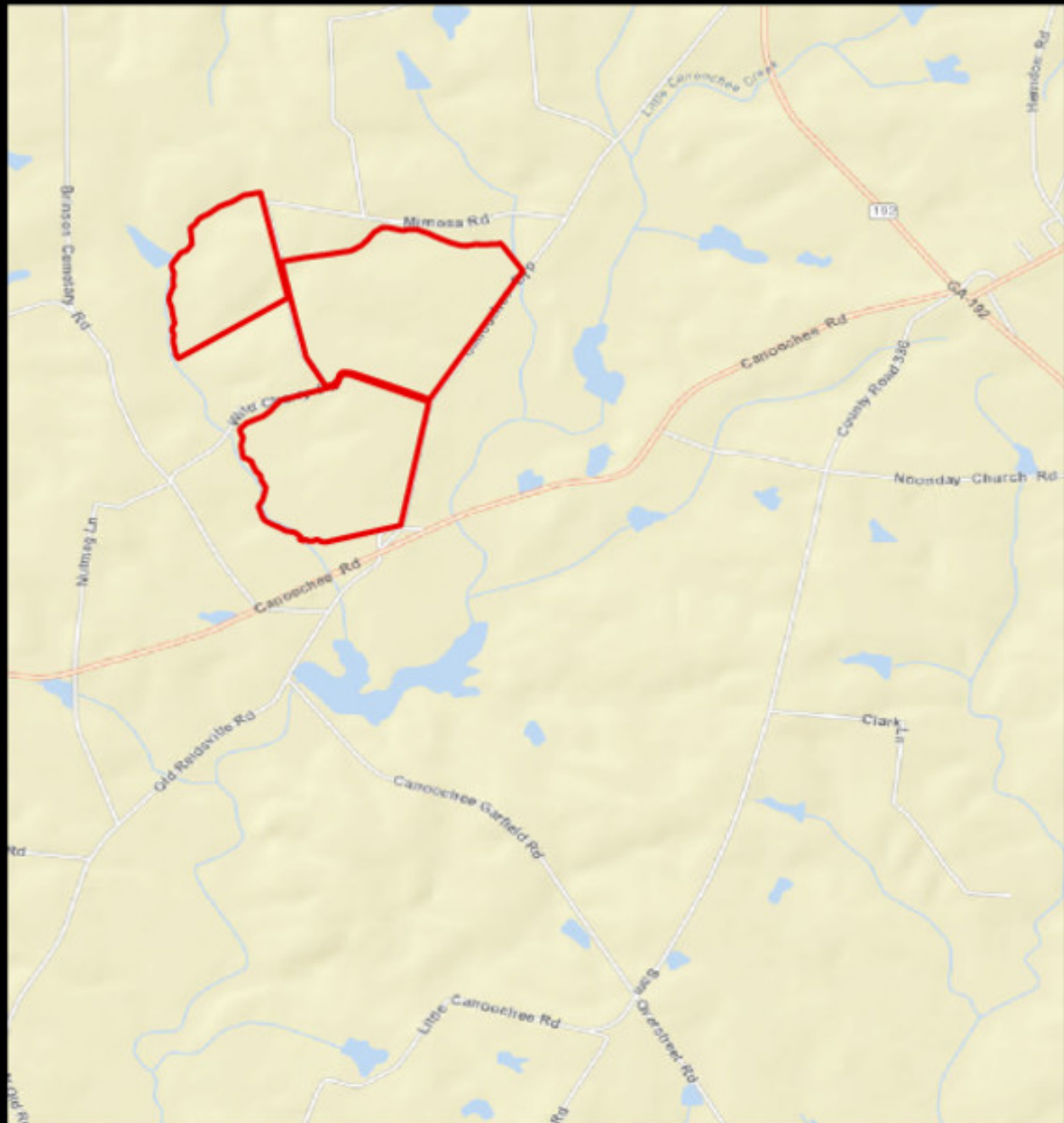


**PLANTATION PROPERTIES
&
LAND INVESTMENTS, LLC**

1207 McClouds Way, Suite 101 | Statesboro, GA 30458
© 2018 LAND INVESTMENTS, LLC | 706.776.5588
Justin Williams
This document is not to be altered, modified, or distributed
www.landanddrivers.com
© 2018



Location Map



**PLANTATION PROPERTIES
&
LAND INVESTMENTS, LLC**

1207 McClouds Way, Suite 101 | Statesboro, GA 30458
© 2012 LAND INVESTMENTS, LLC | 706.776.5558
Justin Williams
This document is not to be altered or distributed
www.landanddrivers.com
© 2012

