



## **253±acs | Horse Creek**

Horse Creek is a pleasant 253± acre timber and recreational property. Truly a diverse and private retreat located between Sylvania and Millen, GA on Buttermilk and Beagle Rd. This tract is fully wooded with a nice stand of natural pine covering most of the tract. Mixed in this 253 acre parcel are 10 year old planted loblolly and about 30± acres of planted longleaf. There are some open areas that could be cultivated into game plots or made in to a lovely home site. This land has a nice roll to it with ridges and natural rock formations. There is a good road system throughout allowing you to meander through the woods, down to the large 2±acre duck pond and along creek. Loaded with wildlife such as deer, duck, turkeys and more. This is a perfect multi-use property! Make this place your new weekend retreat, home site or venture property. Enjoy hunting, fishing, camping and more all on your own land. Call or email us today for more detail or to view this property. 912.764.LAND(5263)



**Price:** \$636,000

**Property Type:** Land

**Status:** Sold

**Street/Address:** Buttermilk & Beagle Road

**City:** Sylvania

**State:** Georgia

**Zip code:** 30467

**County:** screven

**Acreage:** 253

**Per Acre Price:** \$2,507.00

**Phone Number:** 912.764.(LAND)5263

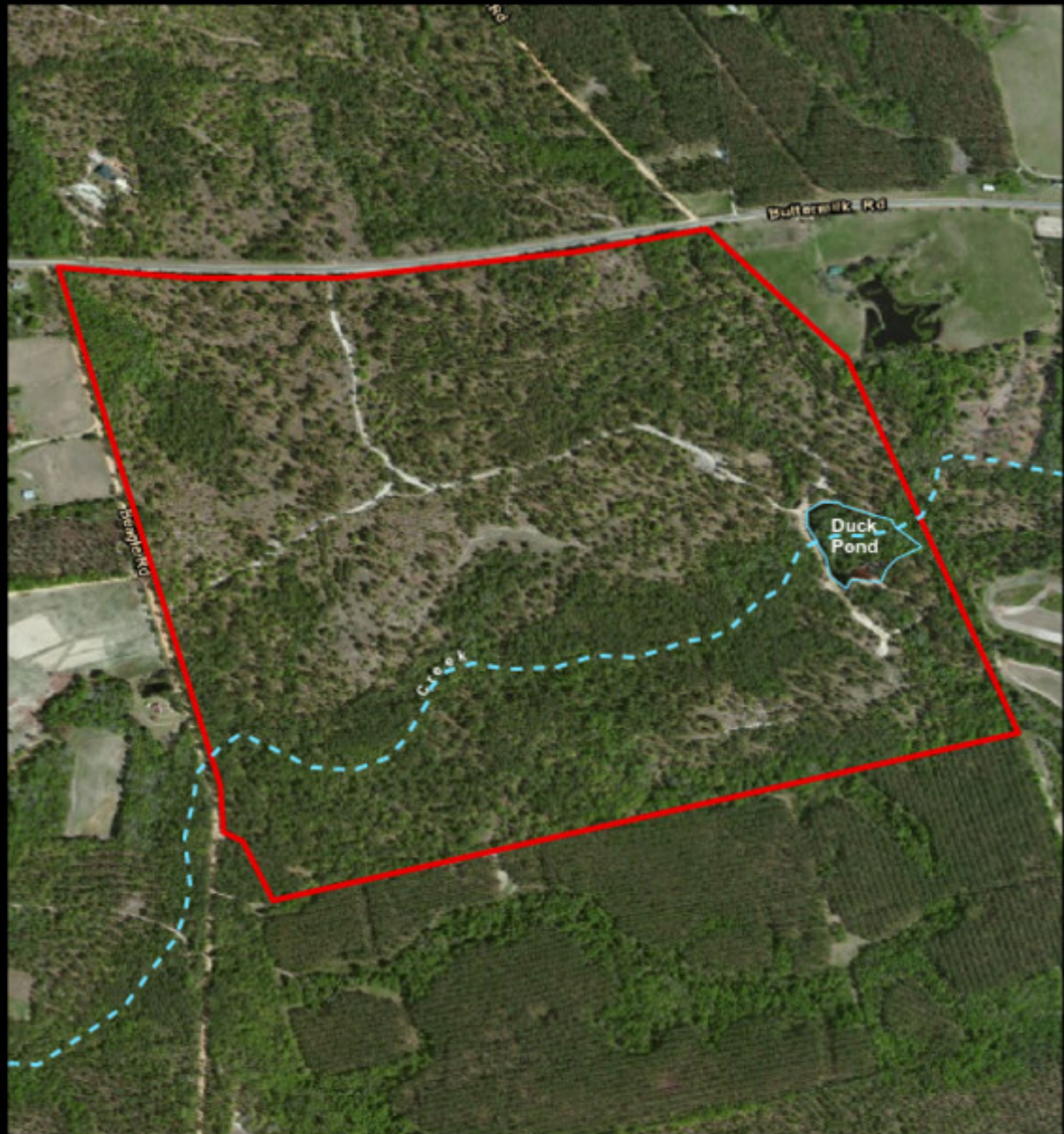
**Email:** [info@landanddrivers.com](mailto:info@landanddrivers.com)

**Google Maps link:** [View Larger Map](#)



## Aerial Map





**PLANTATION PROPERTIES  
&  
LAND INVESTMENTS, LLC**

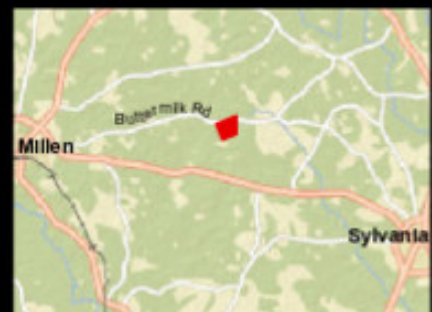
1207 Northpark Way, Suite 101 | Statesboro, GA 30458  
912.764.1660 (3263) | 706.776.5638

Joann Williams

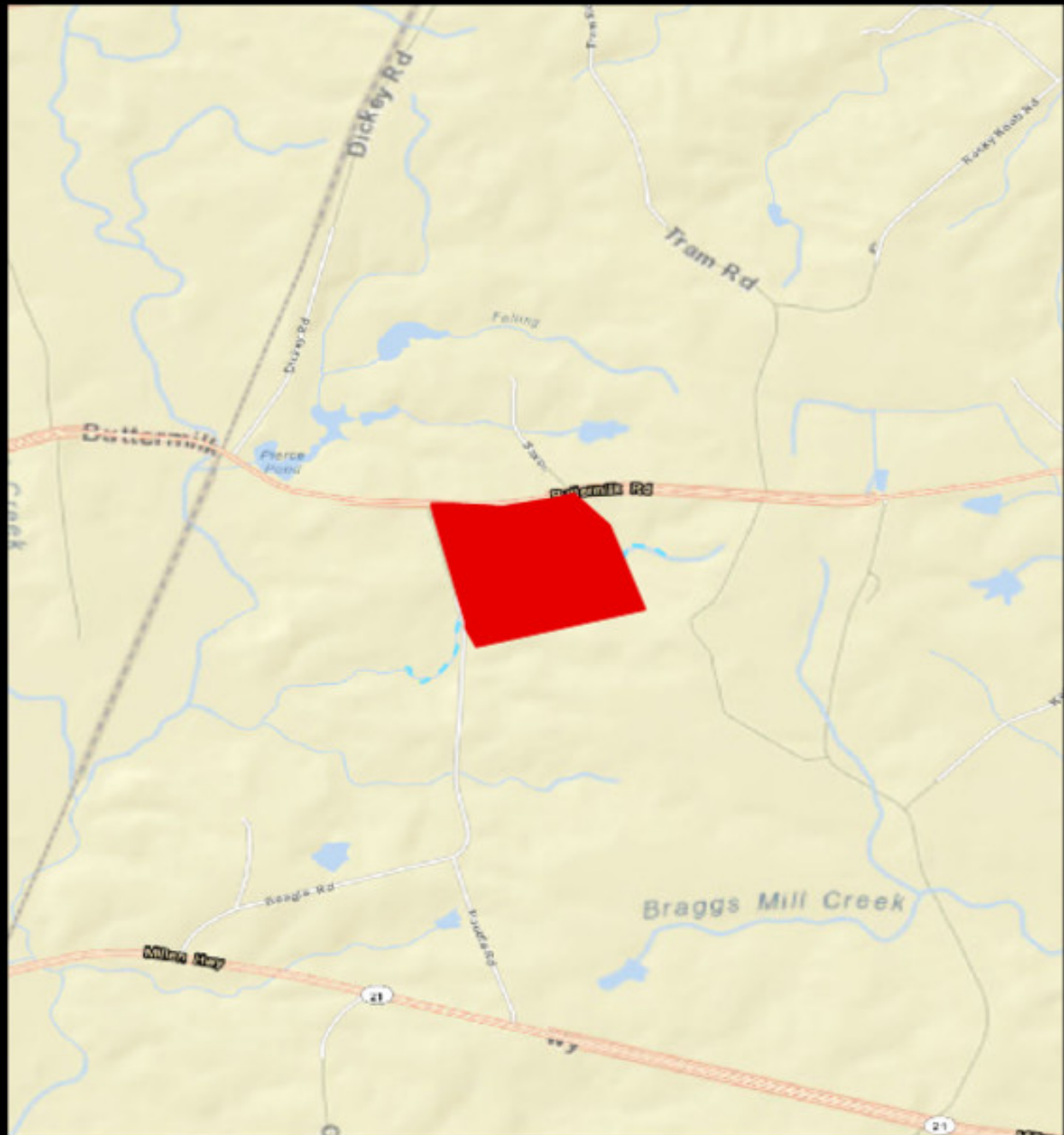
This document is not to be distributed or duplicated

[www.LandAndDrivers.com](http://www.LandAndDrivers.com)

© 2012



## Location Map



**PLANTATION PROPERTIES  
&  
LAND INVESTMENTS, LLC**

1207 North Harris Way, Suite 101 | Statesboro, GA 30458  
912.764.1660 (3263) | 706.776.5638

Joann Williams

This document is not to be distributed or duplicated

[www.LandAndDrivers.com](http://www.LandAndDrivers.com)

© 2012

