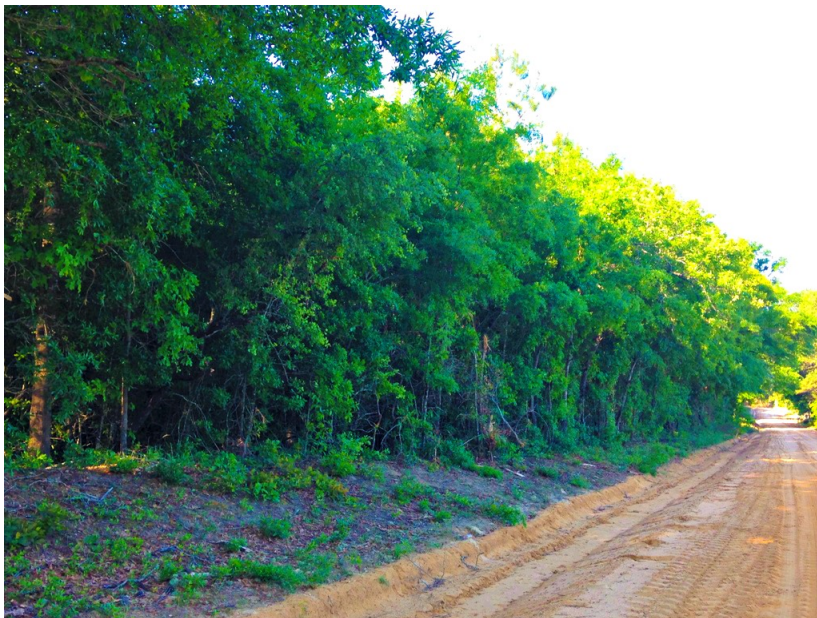




6±acs | Gip Road

Nice wooded 6± acres in Jenkins County. This parcel is located on Gip Road, off HWY 25 just south of Millen. You can be in Statesboro in less than 30 minutes. The property is all wooded with good road frontage and has a possible pond site. Would make an excellent home site in the country. Enjoy hunting, camping and more all on your own land. Call today for more details or to view this property. 912.764.LAND(5263)



Price: \$25,000

Property Type: Land

Status: Sold

Street/Address: 0 Gip Road

City: millen

State: Georgia

Zip code: 30442

County: jenkins

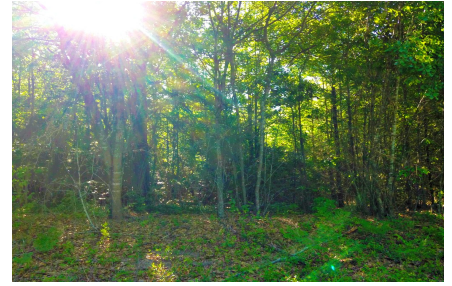
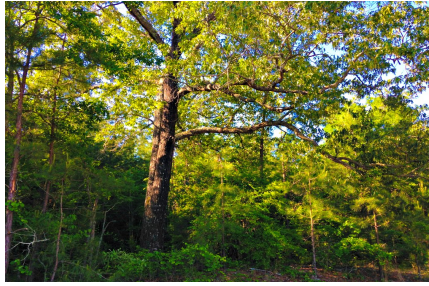
Acreage: 6

Per Acre Price: \$0.00

Phone Number: 912.764.LAND(5263)

Email: info@landanddrivers.com

Google Maps link: [View Larger Map](#)



Aerial Map



**PLANTATION PROPERTIES
&
LAND INVESTMENTS, LLC**

1207 Merchants Way, Suite 101 - Statesboro, GA 30458
912 7641447 (5265) | 708.726.5636

Jay & Wendy

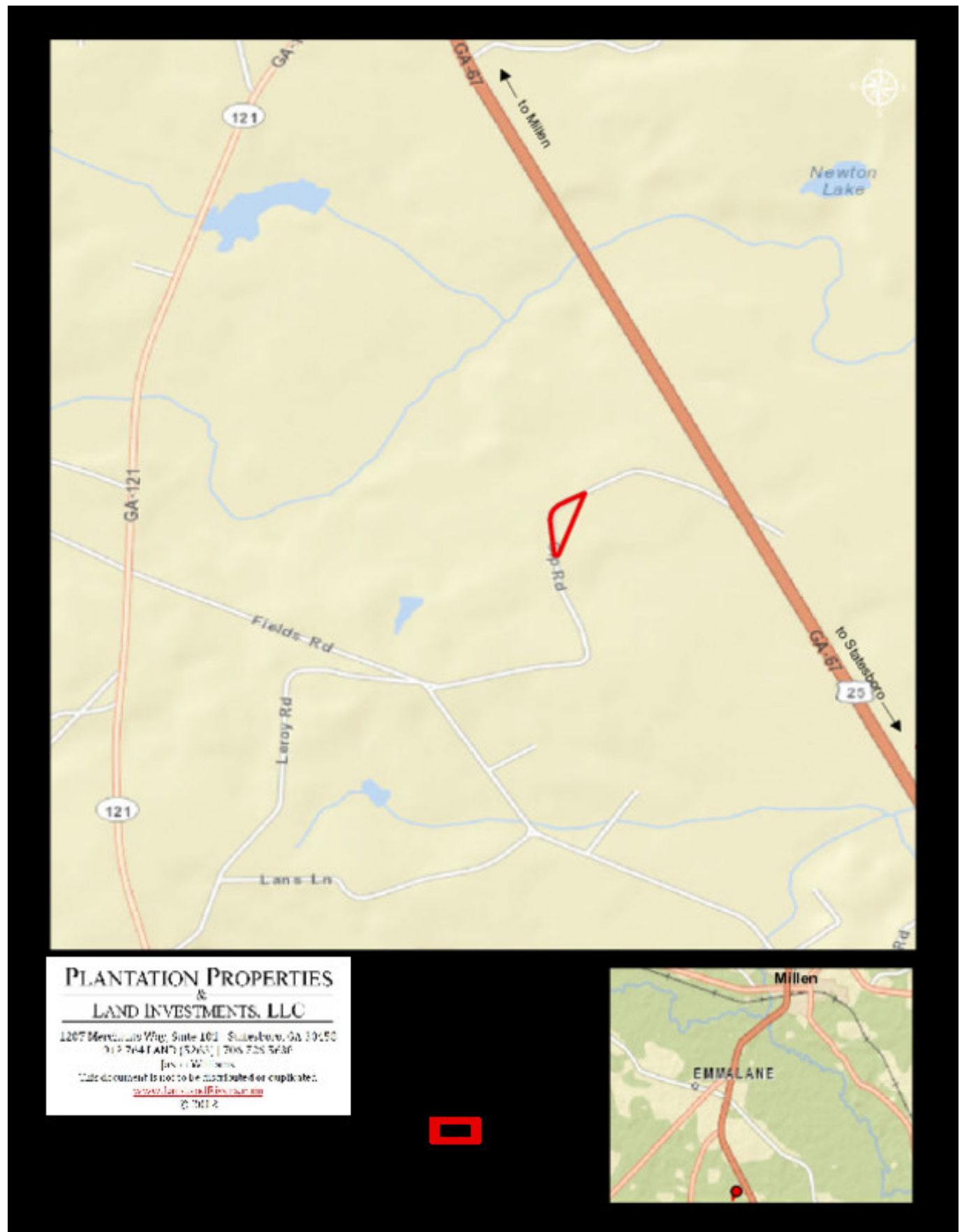
This document is not to be distributed or duplicated.

www.landandinvestments.com

© 2018



Location Map



**PLANTATION PROPERTIES
&
LAND INVESTMENTS, LLC**

1207 Merchants Way, Suite 101 | Statesboro, GA 30458
912 764 1447 (5x/6x) | 708 726 5636
Jesse Williams
This document is not to be distributed or duplicated.
www.landanddrivers.com
© 2018

Source URL: <https://www.landanddrivers.com/property/6%C2%B1acs-gip-road>