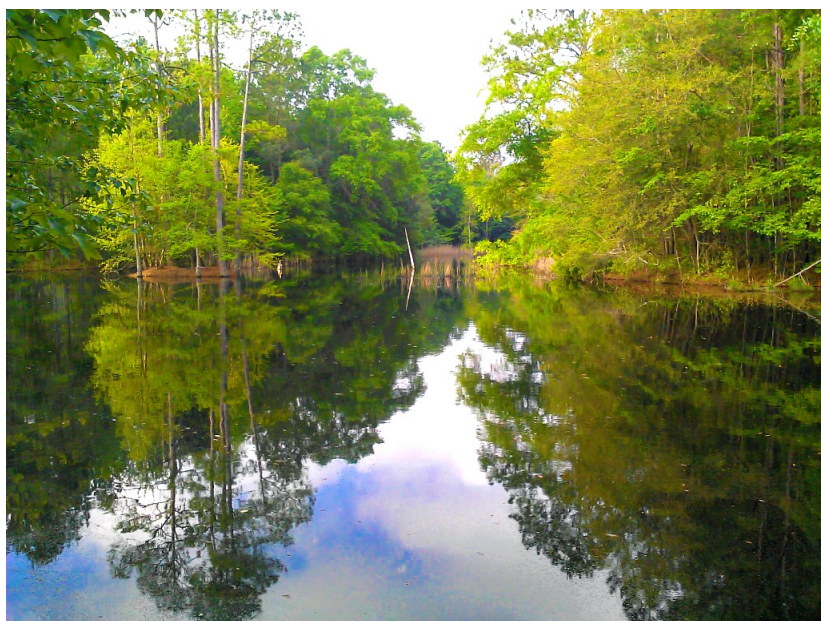




## **46±acs | Canoochee Pines Retreat**

This nice 46± acre tract of land is located about 5 miles southwest from the town of Metter on Mt. Olive Rd. The prefect retreat, this property features a pond and mostly wooded acreage with a good stand of 20±year old thinned pine plantation and some hardwood timber on the rear of the tract. Loaded with wildlife such as deer, turkey and more. A wonderful multi-use property! There are also several good home sites offering lots of privacy and even views of the pond. Only a short distance to I-16 for easy commuting. Whether you are looking for a that perfect weekend-get-away, a good hunting tract, timber investment or a nice place to live, this property would be ideal for it all. Call or email us today for more detail or to view this property.



**Price:** \$78,540

**Property Type:** Land

**Status:** Sold

**Street/Address:** Mt. Olive Road

**City:** Metter

**State:** Georgia

**Zip code:** 30439

**County:** candler

**Acreage:** 46

**Per Acre Price:** \$1,700.00

**Phone Number:** 912.764.LAND(5263)

**Email:** [info@landanddrivers.com](mailto:info@landanddrivers.com)

**Google Maps link:** [View Larger Map](#)

## 46±acs | Canoochee Pines Retreat

Published on Plantation Properties & Land Investments, LLC (<https://www.landandrivers.com>)

---



## Aerial Map



## 46±acs | Canoochee Pines Retreat

Published on Plantation Properties & Land Investments, LLC (<https://www.landanddrivers.com>)



### PLANTATION PROPERTIES & LAND INVESTMENTS, LLC

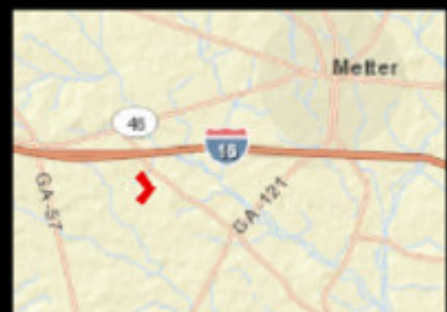
1500 Merchants Way, Suite 101 | Statesboro, GA 30414-4  
913.761.LAND (5263) | 706.926.5638

Jesse Williams

This document is not to be distributed or duplicated

[www.landanddrivers.com](https://www.landanddrivers.com)

© 2013

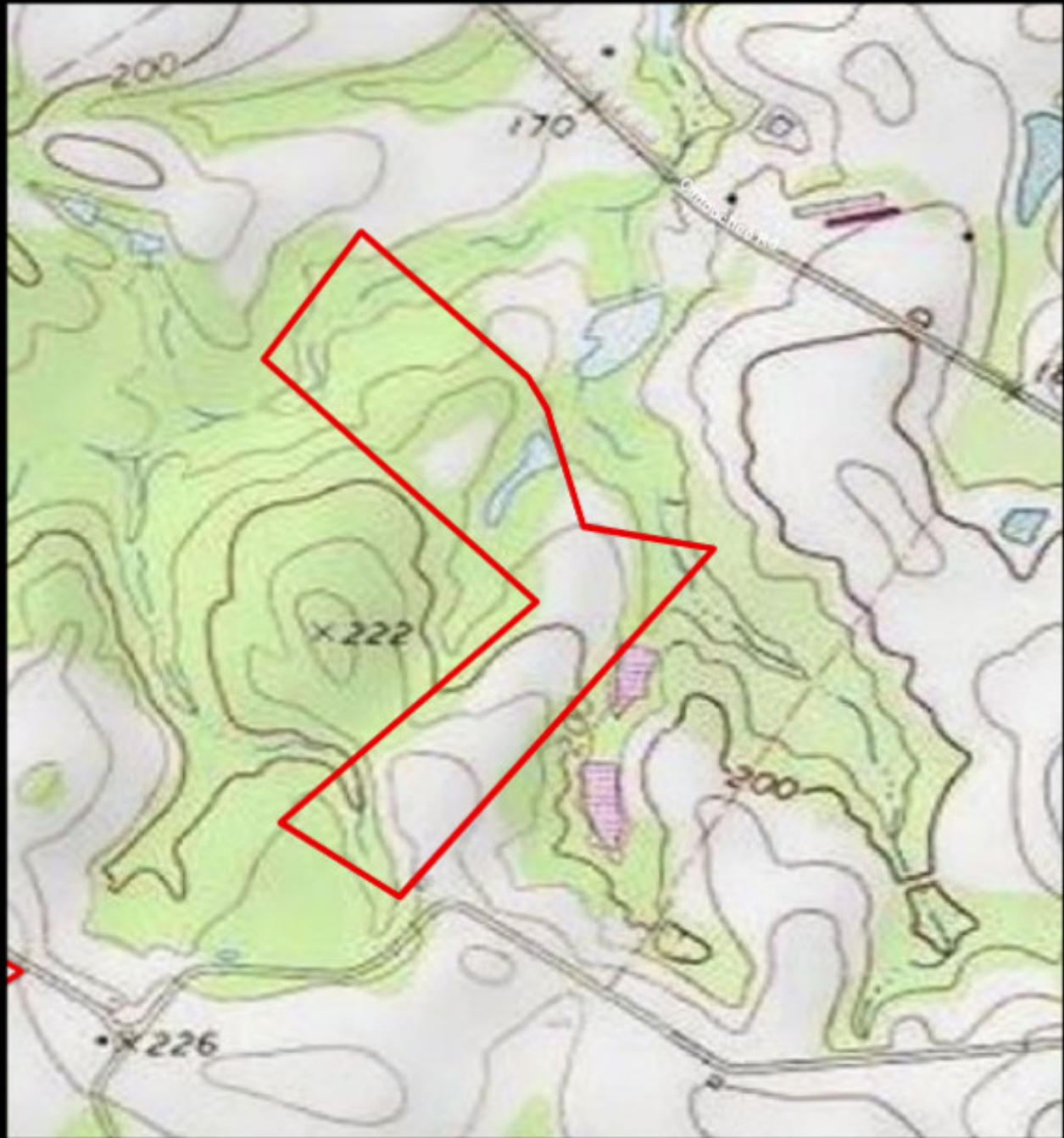


## Topo Map



## 46±acs | Canoochee Pines Retreat

Published on Plantation Properties & Land Investments, LLC (<https://www.landanddrivers.com>)



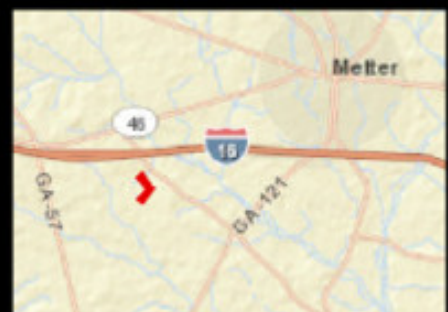
### PLANTATION PROPERTIES & LAND INVESTMENTS, LLC

1500 Merchants Way, Suite 101 | Statesboro, GA 30410-4  
913.761.LAND (5263) | 706.926.5638

Jesse Williams

This document is not to be used for any other purpose.  
[www.landanddrivers.com](https://www.landanddrivers.com)

© 2013



Source URL: <https://www.landanddrivers.com/property/46%C2%B1acs-canoochee-pines-retreat>