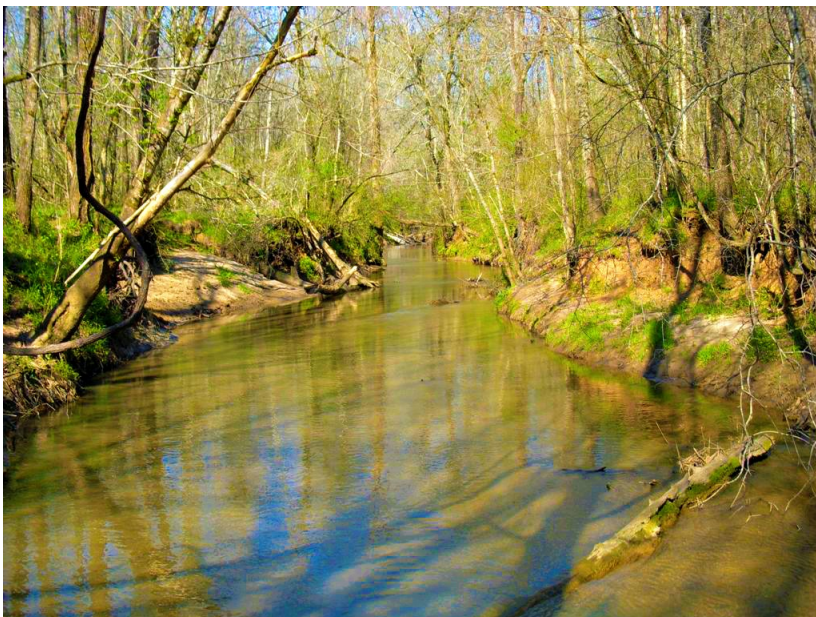




## **62±acs | Sugar Creek Crossing**

JUST REDUCED!! Sugar Creek Crossing, a truly diverse and private property located in southern Morgan County. Convenient to I-20 and 441, only 20 minutes from the beautiful Madison, GA and less than 30 minutes to either Lake Oconee or Lake Sinclair. This 62± acre property is entirely wooded for the most part with some openings that could be cultivated into game plots or made in to a lovely home site. There is a perfect building spot centrally located atop a hill. This tract has 45± acres of nice merchantable upland pines and 18± acres of hardwood bottoms along Little Sugar Creek. Deer and turkey are a common sight on this property which is not surprising with this mix of diversity and natural habitat. The nice roads and trails throughout allow you to meander through the woods and along the creek. A Perfect multi-use property! This tract would be a great investment opportunity for any buyer. Make this property your new weekend retreat, home site or venture property. Enjoy hunting, fishing, camping and more all on your own land. Possible Owner Financing to qualified buyer!. Let us know if you have interest in this excellent tract and we will make arrangements to show you this property. 912.764.LAND(5263)



**Price:** \$212,350

**Property Type:** Land

**Status:** Sold

**Street/Address:** 0 Enterprise Road

**City:** Madison

**State:** Georgia

**Zip code:** 30650

**County:** morgan

**Acreage:** 62

**Per Acre Price:** \$3,425.00

**Phone Number:** 912.764.LAND(5263)



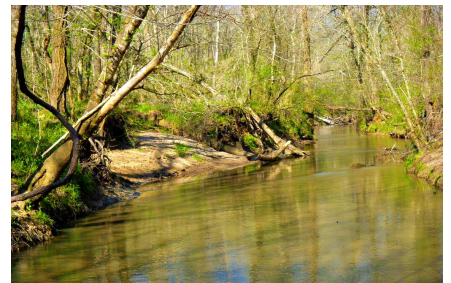
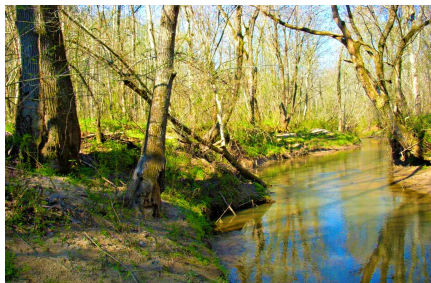
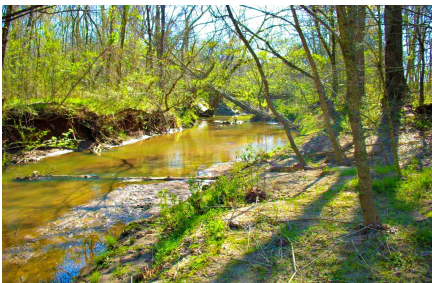
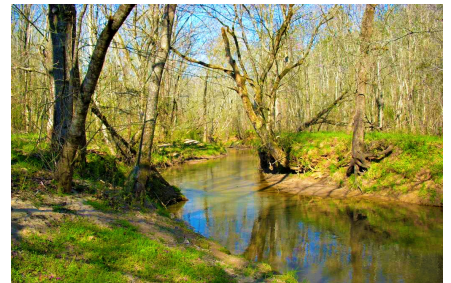
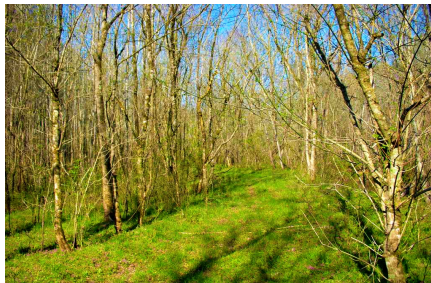
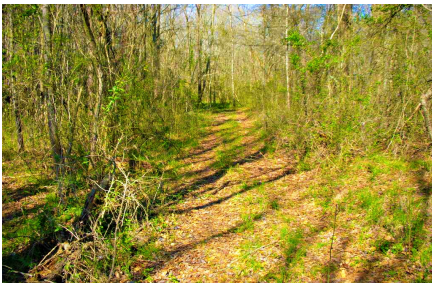
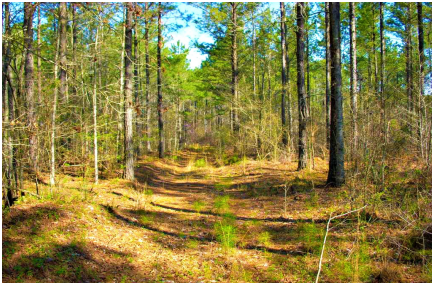
## 62±acs | Sugar Creek Crossing

Published on Plantation Properties & Land Investments, LLC (<https://www.landanddrivers.com>)

---

Email: [info@landanddrivers.com](mailto:info@landanddrivers.com)

Google Maps link: [View Larger Map](#)



## Aerial Map





**PLANTATION PROPERTIES  
&  
LAND INVESTMENTS, LLC**

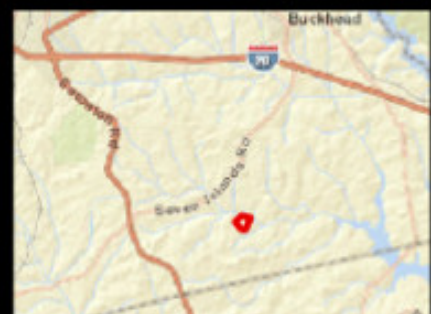
1207 Northpark Way, Suite 101 | State Home, GA 30428  
912.764.1660 (3268) | 706.776.5638

Joann Williams

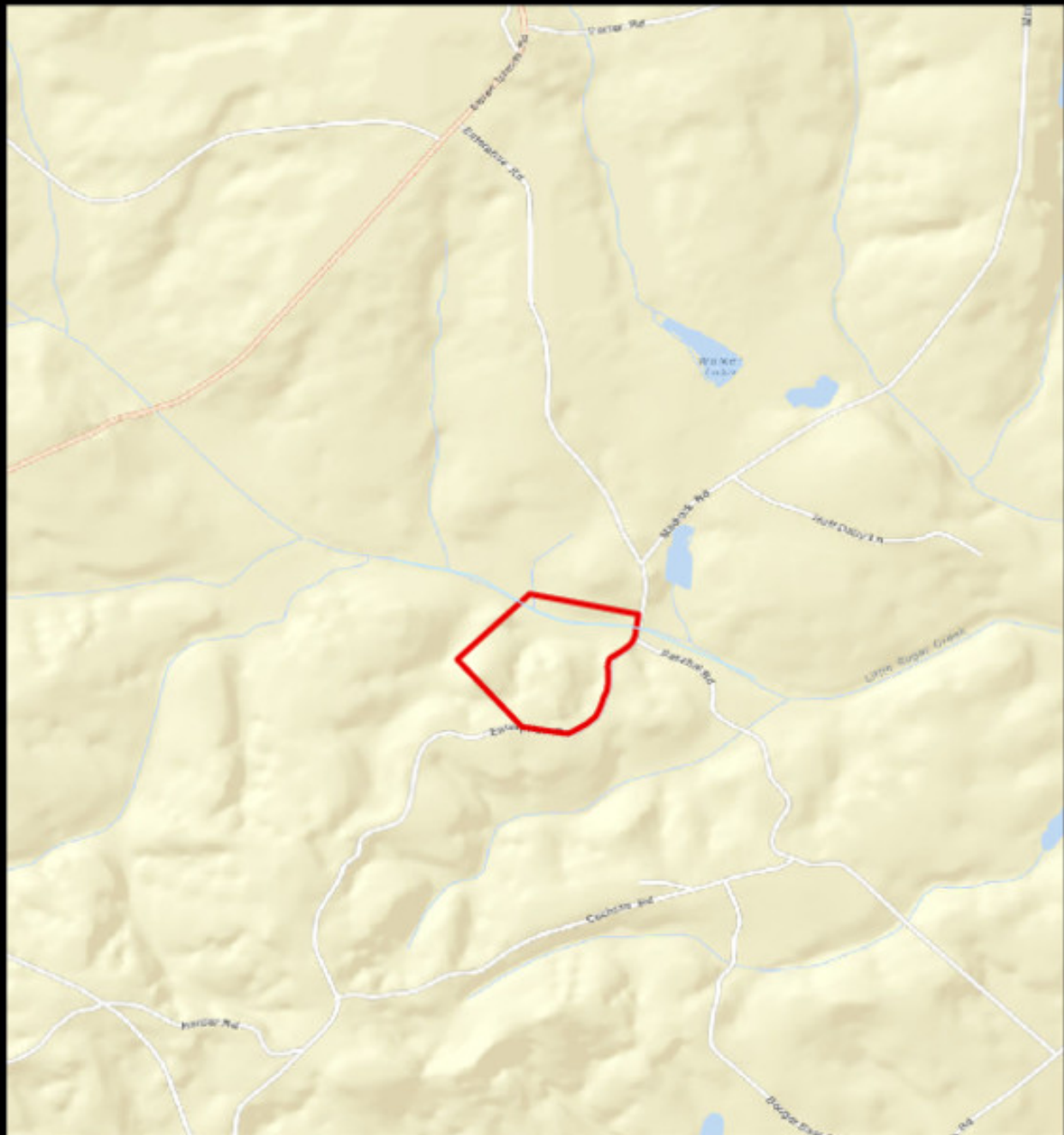
This document is not to be distributed or duplicated

[www.LandAndDrivers.com](http://www.LandAndDrivers.com)

© 2012



## Location Map



**PLANTATION PROPERTIES  
&  
LAND INVESTMENTS, LLC**

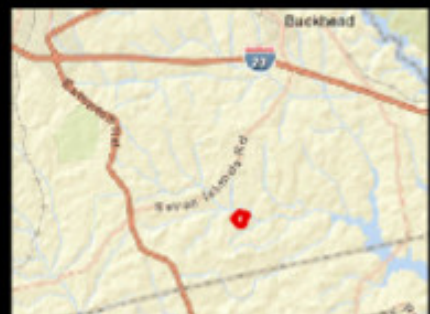
1207 Northpark Way, Suite 101 | State Home, GA 30458  
404.764.1660 (3263) | 706.776.5638

Joann Williams

This document is not to be distributed or duplicated

[www.LandAndDrivers.com](https://www.LandAndDrivers.com)

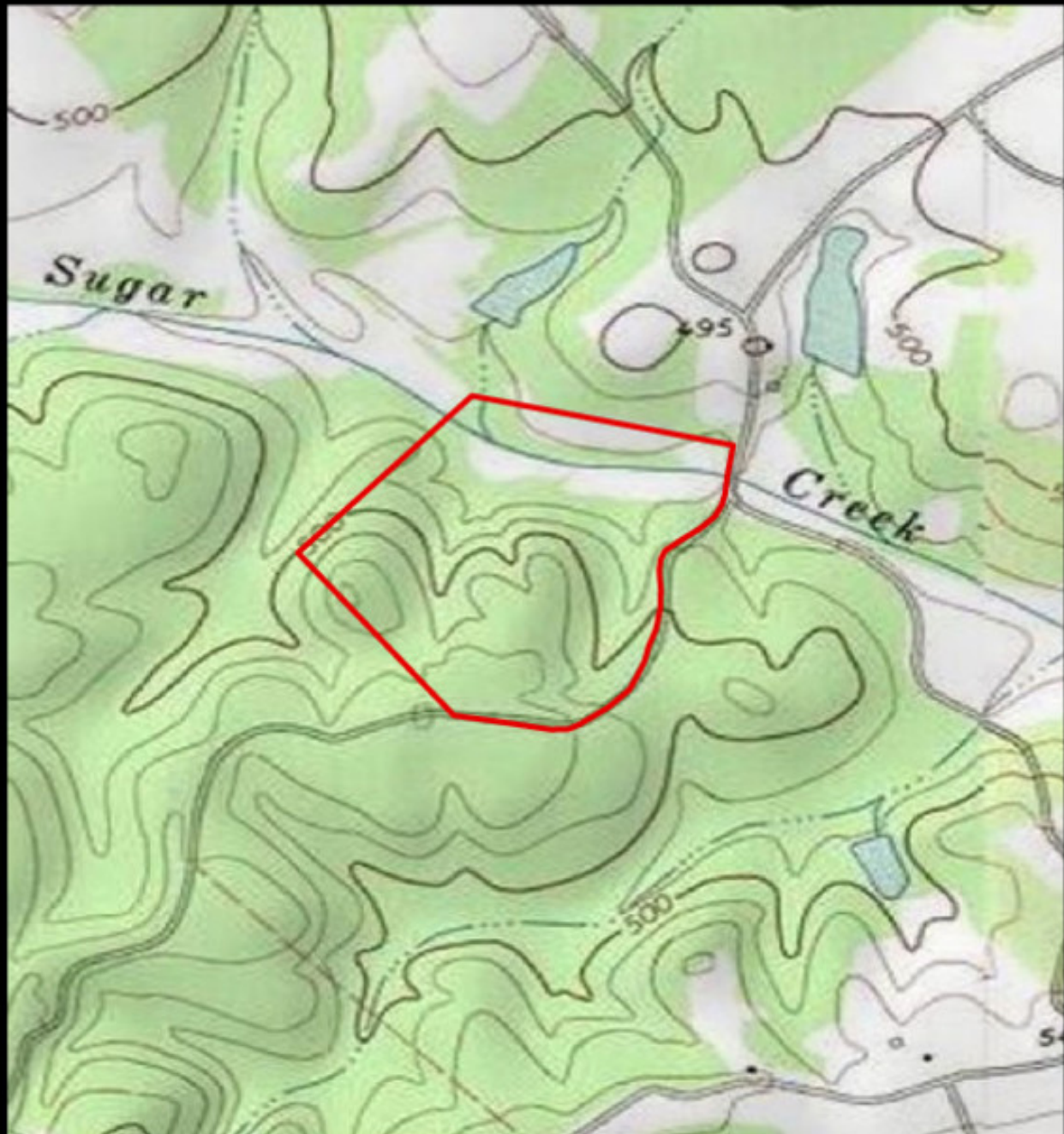
© 2012





## 62±acs | Sugar Creek Crossing

Published on Plantation Properties & Land Investments, LLC (<https://www.landanddrivers.com>)



### PLANTATION PROPERTIES & LAND INVESTMENTS, LLC

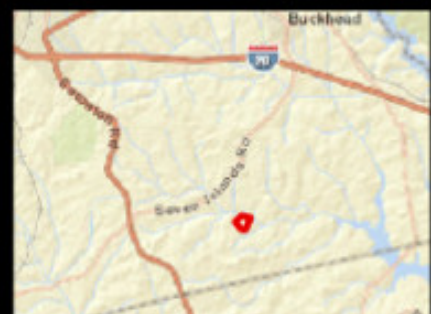
1207 Northpark Way, Suite 101 | State Home, GA 30428  
412.764.1660 (3263) | 706.776.5638

Joan Williams

This document is not to be distributed or duplicated

[www.LandAndDrivers.com](http://www.LandAndDrivers.com)

© 2012



Source URL: <https://www.landanddrivers.com/property/62%C2%B1acs-sugar-creek-crossing>