



Longview Tract

The Longview tract is 100+/- acres of prime hunting land in Wilkinson County. The hardwood regeneration is great cover for game while the soft mast trees and acorns provide food. This property is made up of ridges and bottoms that roll down to the small, seasonal creek in the back. Food plots are already cleared and the interior road system gives great access. The property has long frontage on Waterfork road. This tract's central location puts it within easy driving distance to Macon or Atlanta. Call us today to view this property!



Price: \$210,000

Property Type: Land

Status: Sold

Street/Address: Waterfork Road

City: Irwington

State: Georgia

Zip code: 31042

County: wilkinson

Acreage: 100

Per Acre Price: \$2,100.00

Phone Number: (478) 279-2148

Email: michael@landanddrivers.com

Google Maps link: [View Larger Map](#)

Longview Tract

Published on Plantation Properties & Land Investments, LLC (<https://www.landanddrivers.com>)



PLANTATION PROPERTIES

& LAND INVESTMENTS, LLC

1207 Merchants Way, Suite 101 | Strasburg, VA 22658

912.764.1162 / 703.279.2196

Michael Wilson

This document is not to be distributed or reprinted

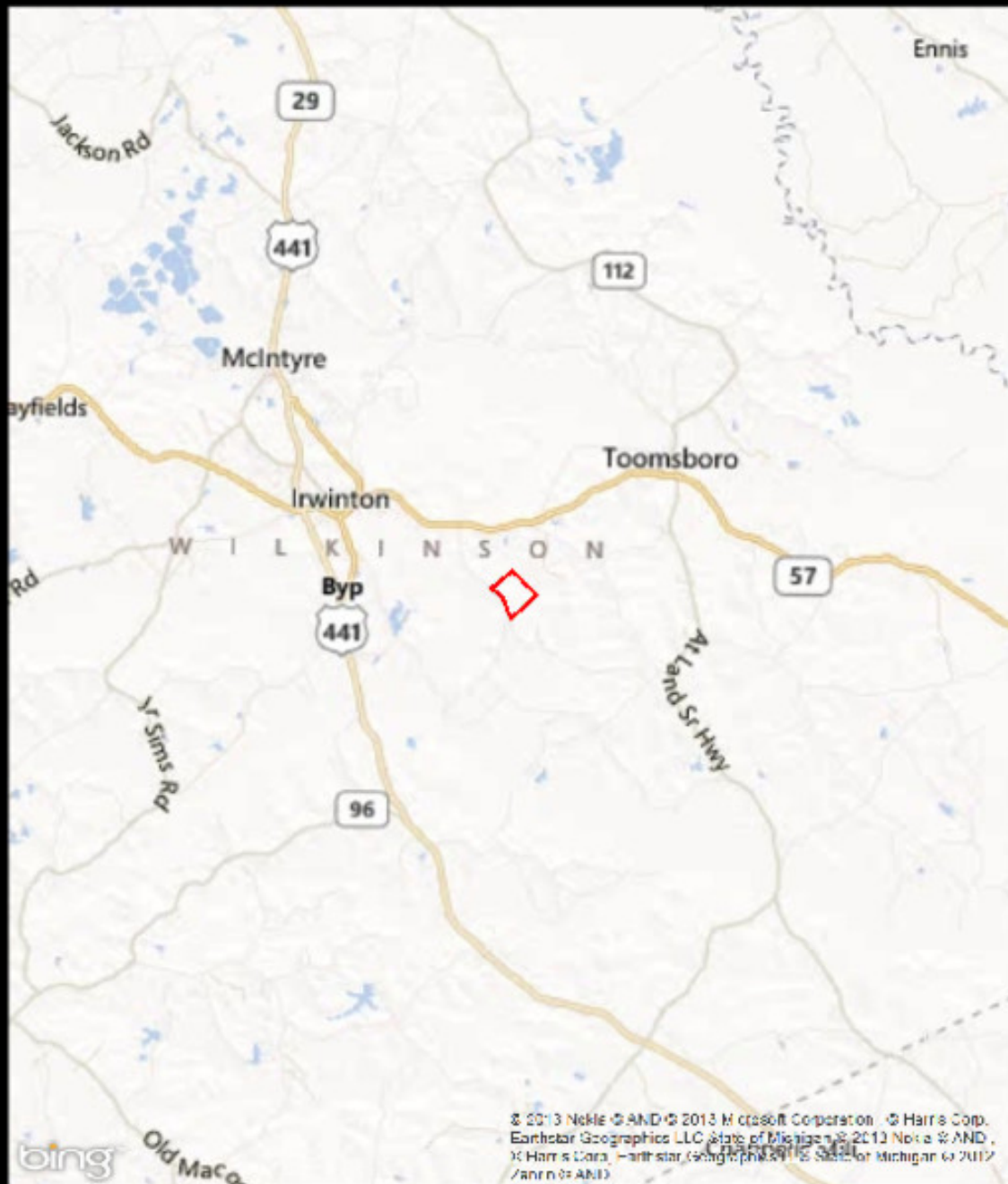
www.landanddrivers.com

© 2012



Longview Tract

Published on Plantation Properties & Land Investments, LLC (<https://www.landanddrivers.com>)



PLANTATION PROPERTIES

& LAND INVESTMENTS, LLC

1207 Merchants Way, Suite 101 | Statesboro, GA 31060

912.764.1162 / 478.279.2196

Michael Griffin

This document is not to be distributed or reprinted

www.landanddrivers.com

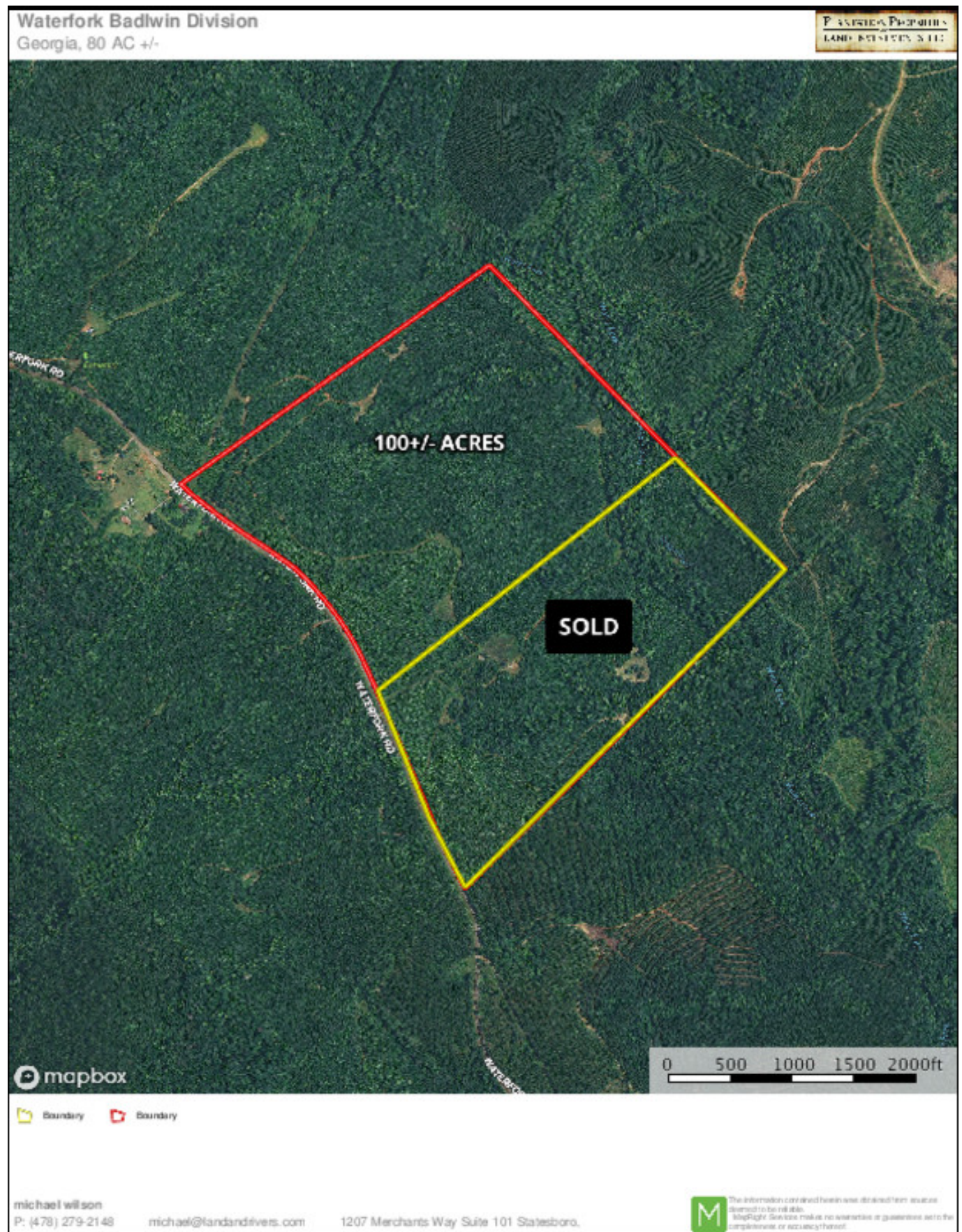
© 2013



Aerial Map

Longview Tract

Published on Plantation Properties & Land Investments, LLC (<https://www.landanddrivers.com>)



Source URL: <https://www.landanddrivers.com/property/longview-tract-0>