

## Hwy 46- 100+/-acs

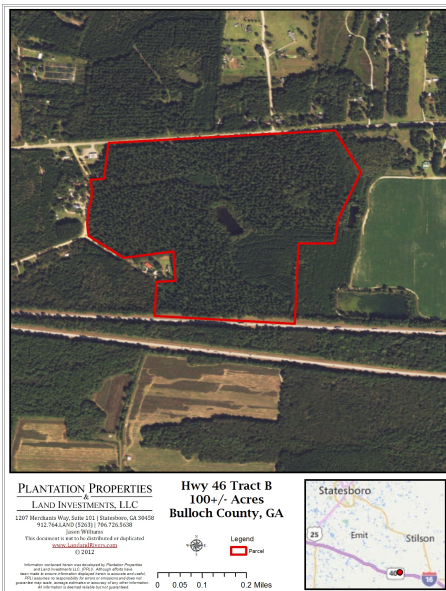
Published on Plantation Properties & Land Investments, LLC (<https://www.landanddrivers.com>)

---



## Hwy 46- 100+/-acs

100+/-acs in Bulloch County! This property features a POND with mostly wooded pine land and some natural hardwood. Located in the Brooklet School district, perfect tract for a home in the country or investment opportunity. Conveniently located only about 25-30 min from Savannah. Just off I-16 with road frontage on Hwy 46, Lanier Rd and along I-16. This place is loaded with deer signs and would make an excellent hunting tract, homesite, weekend retreat or venture property. Seller may divide. A MUST SEE!!! Call Jason Today! 912.764.LAND(5263)



**Price:** \$345,000

**Property Type:** Land

**Status:** Sold

**Street/Address:** HWY 46 & Lanier Road & I-16

**City:**

**State:** Georgia

**Zip code:** 30458

**County:** bulloch

**Acreage:** 100

**Per Acre Price:** \$3,450.00

**Phone Number:** 912-764-LAND(5263)

**Email:** [info@landanddrivers.com](mailto:info@landanddrivers.com)

**Google Maps link:** [View Larger Map](#)

## Aerial Map 100 acres

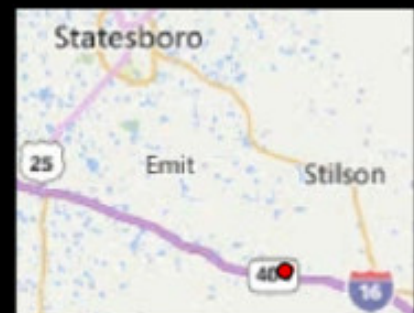
## Hwy 46- 100+/-acs

Published on Plantation Properties & Land Investments, LLC (<https://www.landanddrivers.com>)



### PLANTATION PROPERTIES & LAND INVESTMENTS, LLC

1207 N. Mount Way, Suite 101 | Statesboro, GA 30458  
© 12.75+/- LAND (5253) | 706.776.5588  
Justin Williams  
This document is not to be distributed or displayed  
[www.landanddrivers.com](https://www.landanddrivers.com)  
© 2017



Source URL: <https://www.landanddrivers.com/property/hwy-46-100-acs>