



The Farmhouse Tract

Beautiful 6+/- acres of land features a 1900's farmhouse with 4 bedrooms & 3 baths, barns, pecan orchard and more! The southern charm of this delightful Farmhouse and property would make for a great home or boasts loads of potential as a possible wedding venue or other endeavor. Located in the very desirable Westside of Statesboro on Banks Dairy Road. Make this your new home place, family retreat or investment property! Call today to see this farm! (912)764.LAND (5263)



Price: \$300,000

Property Type: Land

Status: Sold

Street/Address: 5668 Banks Dairy Rd

City:

State: Georgia

Zip code: 30458

County: bulloch

Acreage: 6

Per Acre Price: \$0.00

Phone Number: (912)764-5263

Email: info@landanddrivers.com

Google Maps link: [View Larger Map](#)

The Farmhouse Tract

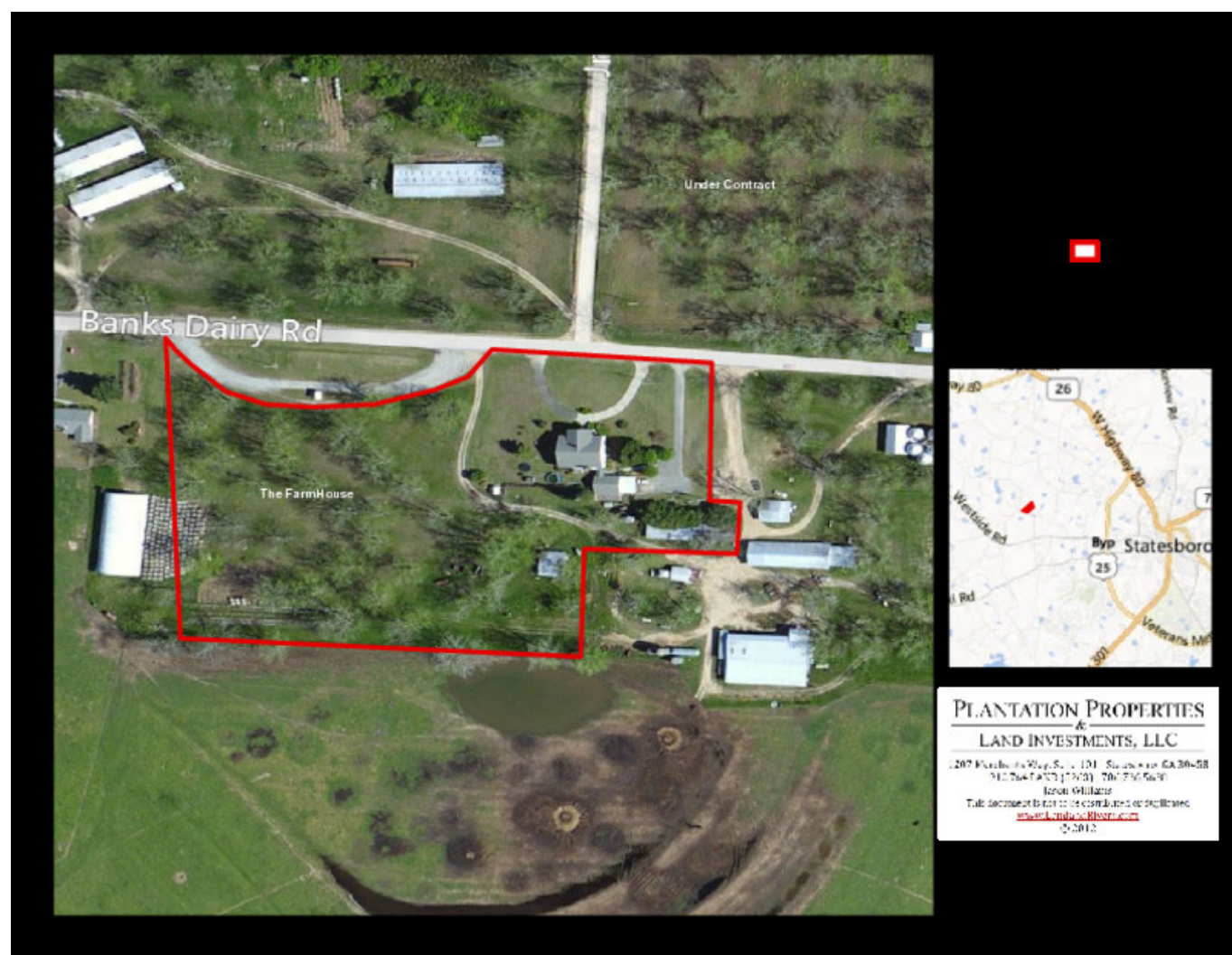
Published on Plantation Properties & Land Investments, LLC (<https://www.landanddrivers.com>)



Aerial Map

The Farmhouse Tract

Published on Plantation Properties & Land Investments, LLC (<https://www.landandrivers.com>)



Source URL: <https://www.landandrivers.com/property/farmhouse-tract>