

Mt. Olive Tract

Published on Plantation Properties & Land Investments, LLC (<https://www.landanddrivers.com>)



Mt. Olive Tract

This nice 40 acre tract of land is located about 3 miles south I-16 and about 5 miles south of Metter on Mt. Olive Rd. There is approximately 2,100 ft of road frontage with power along the highway. All of the property is wooded with a good stand of 20 year old pine plantation and some hardwood timber. Loaded with wildlife such as deer, turkey and more. A wonderful multi-use property! There are also several good home sites offering lots of privacy and only a short distance to I-16 for easy commuting. Whether you are looking for a good hunting tract, timber investment or a nice place to live, this property would be ideal for all.



Price: \$79,800

Property Type: Land

Status: Sold

Street/Address: Mt. Olive Road

City: Metter

State: Georgia

Zip code: 30420

County: candler

Acreage: 40

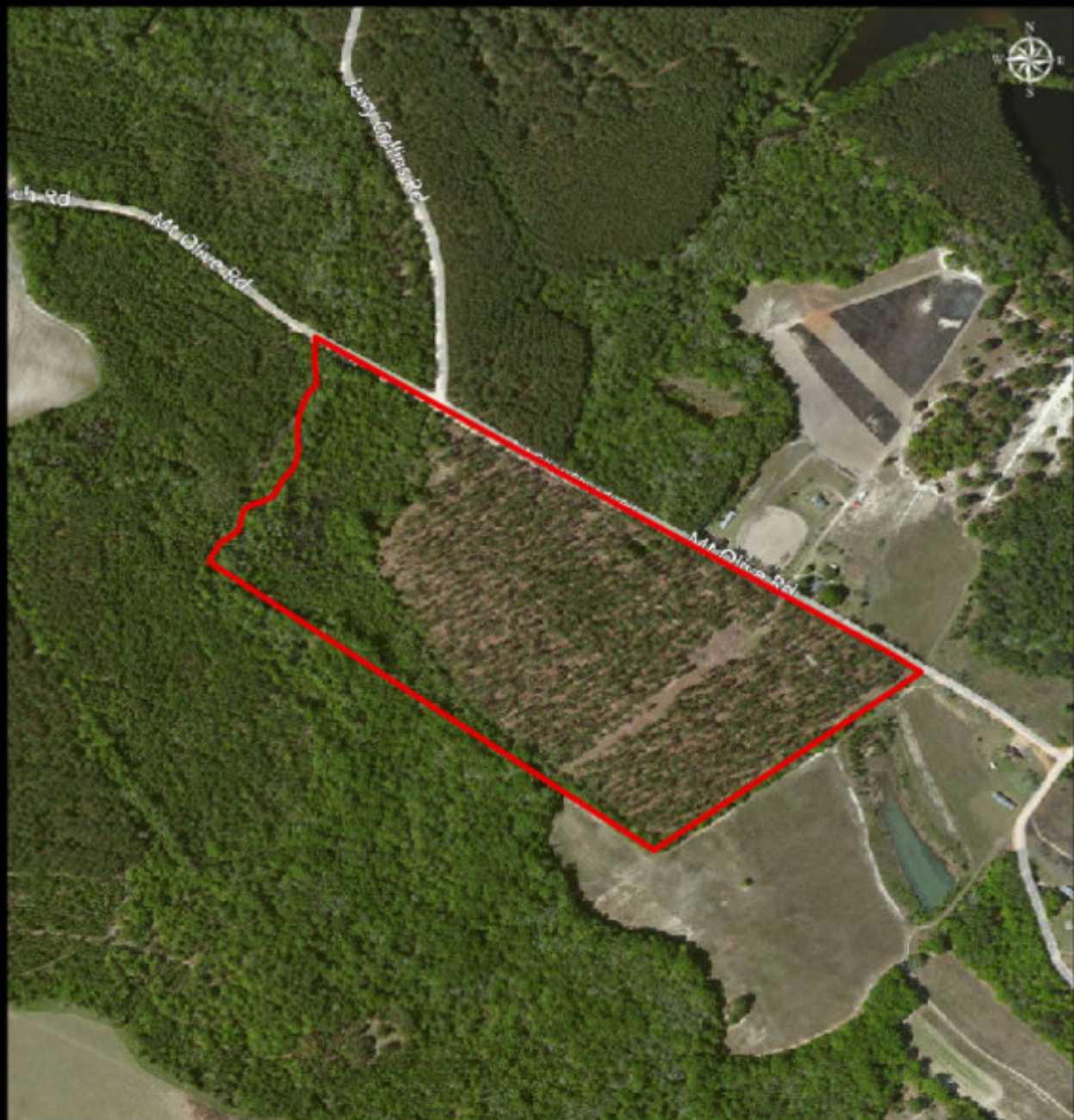
Per Acre Price: \$1,995.00

Phone Number: 912.764.LAND(5263)

Email: jasonwilliams@landanddrivers.com

Google Maps link: [View Larger Map](#)

Aerial Map



**PLANTATION PROPERTIES
&
LAND INVESTMENTS, LLC**

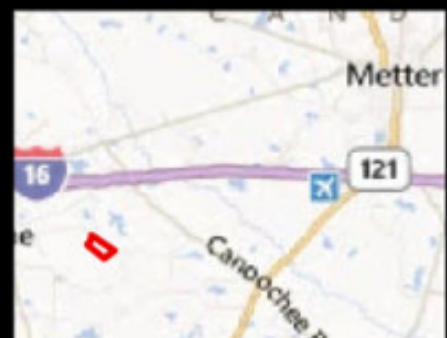
12072 Sandcastle Way, Suite 101, Suwanee, GA 30086
770.764.LAND (5263) | 770.726.3630

Jason Williams

This document is not to be distributed or duplicated

www.landanddrivers.com

© 2022



Topo Map



**PLANTATION PROPERTIES
&
LAND INVESTMENTS, LLC**

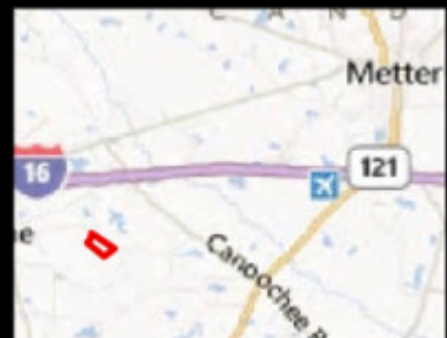
1207 Sandcastle Way, Suite 101, Suwanee, GA 30086
770.764.LAND (5263) | 770.726.3630

Jason Williams

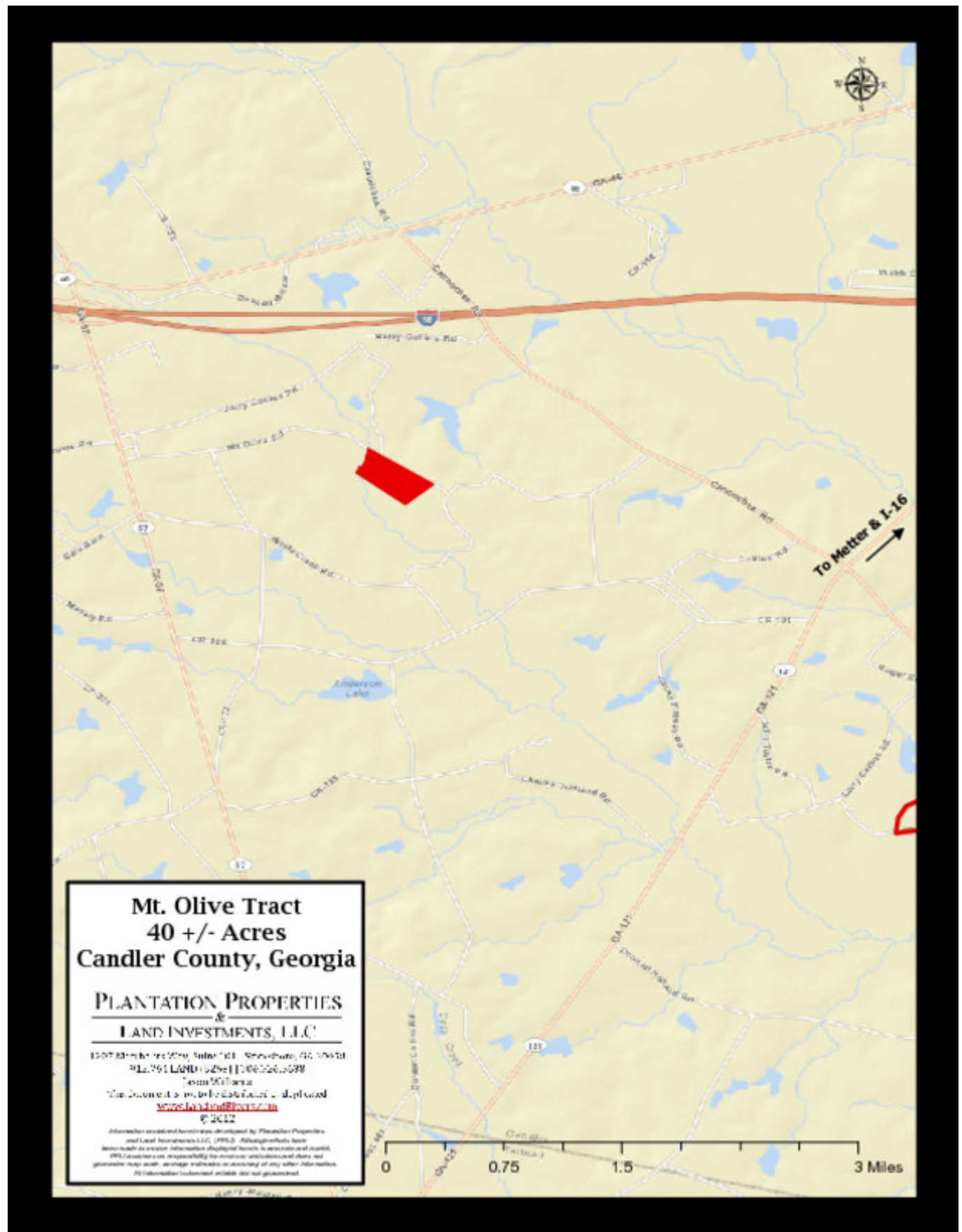
This document is not to be distributed or duplicated

www.landanddrivers.com

© 2022



Location Map



Flyer

40 acres in Candler County

Plantation Properties & Land Investments | 912-764-LAND | jasonwilliams@landandrivers.com



Property Address

Mt Olive Road
Metter, Georgia 30439

Property Highlights

- Price: \$79,800.00
- Acres: 40.00
- County: Candler
- State: Georgia
- Closest City: Metter
- Property Type: Acreage

Property Description

This nice 40 acre tract of land is located about 3 miles south I-16 and about 5 miles south of Metter on Mt. Olive Rd. There is approximately 2,100 ft of road frontage with power along the highway. All of the property is wooded with a good stand of pine plantation and some hardwood timber. Loaded with wildlife such as deer, turkey and more. A wonderful multi-use property! There are also several good home sites offering lots of privacy and only a short distance to I-16 for easy commuting. Whether you are looking for a good hunting tract, timber investment or a nice place to live, this property would be ideal for all.

Driving Directions

located about 3 miles south I-16 and about 5 miles south of Metter on Mt. Olive Rd. call for maps and directions.

PLANTATION PROPERTIES
&
LAND INVESTMENTS, LLC

Jason Williams
jasonwilliams@landandrivers.com
912-764-LAND
1207 Merchants Way
Suite 101
Statesboro, GA 30458
www.LandandRivers.com

More details at landsofgeorgia.com/listing/1440905