



Mt. Olivet Rd

The Mt. Olivet tract is a very beautiful and diverse property. It contains mature Pecan orchards as well as Longleaf and Loblolly stands. Every acre of the tract is producing something. Several nice home sites are situated around the property. Will make a perfect place to build that country home or use as your getaway.



Price: \$301,350

Property Type: Land

Status: Sold

Street/Address:

City: Swainsboro

State: Georgia

Zip code: 30401

County: emanuel

Acreage: 123

Per Acre Price: \$2,450.00

Phone Number: (478)279-2148

Email: michael@landanddrivers.com

Google Maps link: [View Larger Map](#)

Mt. Olivet Rd

Published on Plantation Properties & Land Investments, LLC (<https://www.landanddrivers.com>)



Mt. Olivet Rd

Published on Plantation Properties & Land Investments, LLC (<https://www.landanddrivers.com>)



PLANTATION PROPERTIES & LAND INVESTMENTS, LLC

1207 Merchants Way, Suite 101 | Statesboro, GA 30458
912.764.4112 | 912.799.2148
Michael Wilton
This document is not a legal document and is not intended to be.
www.LandandDrivers.com
© 2013



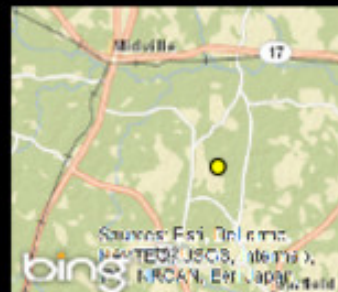
Mt. Olivet Rd

Published on Plantation Properties & Land Investments, LLC (<https://www.landanddrivers.com>)



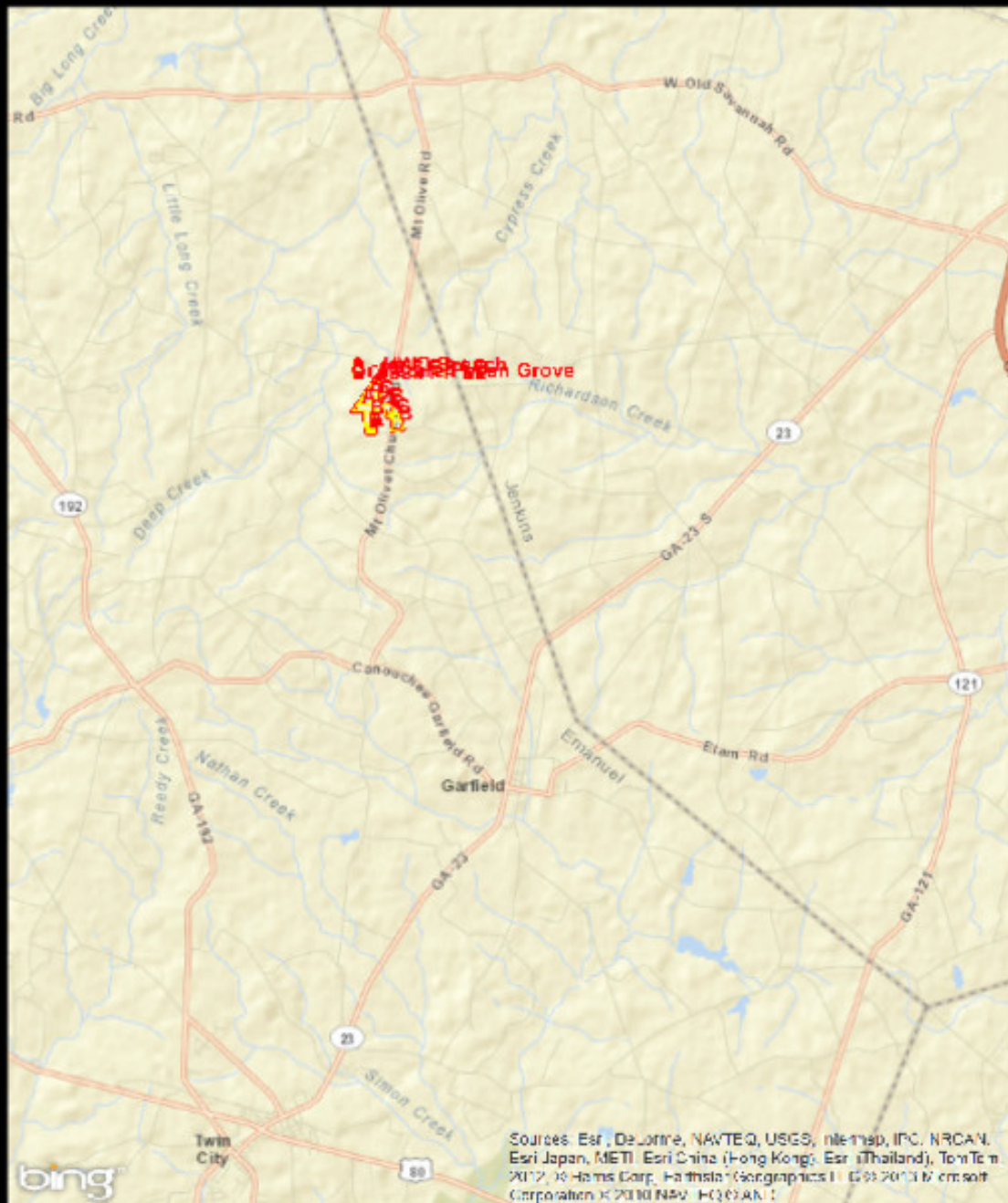
PLANTATION PROPERTIES & LAND INVESTMENTS, LLC

1207 Merchants Way, Suite 101 | Statesboro, GA 31060
912.664.1162 / 478.229.2196
Michael Griffin
This document is not to be distributed or reprinted
www.landanddrivers.com
© 2013



Mt. Olivet Rd

Published on Plantation Properties & Land Investments, LLC (<https://www.landanddrivers.com>)



PLANTATION PROPERTIES

& LAND INVESTMENTS, LLC

1207 Merchants Way, Suite 101 | Statesboro, GA 30428

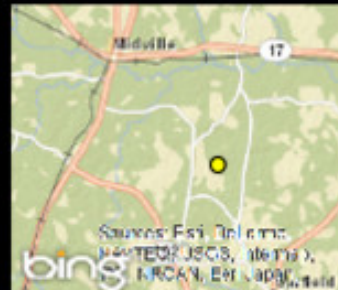
912.764.1162 / 478.279.2196

Michael Griffin

This document is not to be distributed or reproduced

www.landanddrivers.com

© 2013



Source URL: <https://www.landanddrivers.com/property/mt-olivet-rd>