



Arrowhead Farms

Arrowhead Farm is a delightful 1026+/- acre southern plantation located just south of Waynesboro, GA in Burke County. This beautiful farm was once an active southern estate, and is loaded with bits of history throughout. As you meander about this charming manor you can see the original southern plantation house, pecan orchard, barns, windmill and even the original tenant houses that all still remain intact. The property itself consists of mostly of cultivated farm land, with a balanced mix of pine plantation and hardwoods. The pine plantation ranges in ages 20+/- as well as some younger pre-merchantable timber. Some of the hardwood has been harvested, and left a perfect lake/pond site amidst the center of the property. With minimal excavating this tract could feature a nice sized body of water. To the east this tract is bordered by Beedy Branch with over 1.6 miles of frontage. The southern boundary of Arrowhead Farm features the pristine Buckhead Creek. This farm is truly unique in all its features as well as it being such a large single parcel. One of a kind find. This multi-use property would be a great investment opportunity for any buyer. Loaded with wildlife such as deer, duck, turkeys and more! Ideal for a get-away in the country, a working farm/ranch, homesite or as an investment property. The calm seclusion at this plantation is just right! Call today for more detail or to see this farm 912.764.LAND!



Price: \$2,872,800
Property Type: Land
Status: Sold
Street/Address: Beedy Branch Rd
City: Waynesboro
State: Georgia
Zip code: 30830
County: burke
Acreage: 1026

Arrowhead Farms

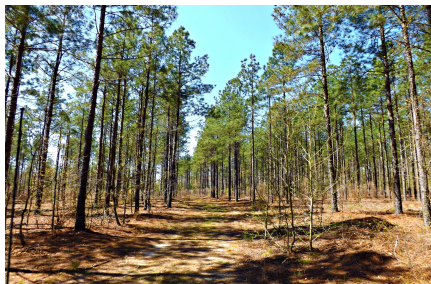
Published on Plantation Properties & Land Investments, LLC (<https://www.landanddrivers.com>)

Per Acre Price: \$2,800.00

Phone Number: 706.726.5638

Email: jason@landanddrivers.com

Google Maps link: [View Larger Map](#)



Aerial



**PLANTATION PROPERTIES
&
LAND INVESTMENTS, LLC**

1207 Merchants Way, Suite 101 | Statesboro, GA 30458
912.754.1140 (R263) | 706.726.5698

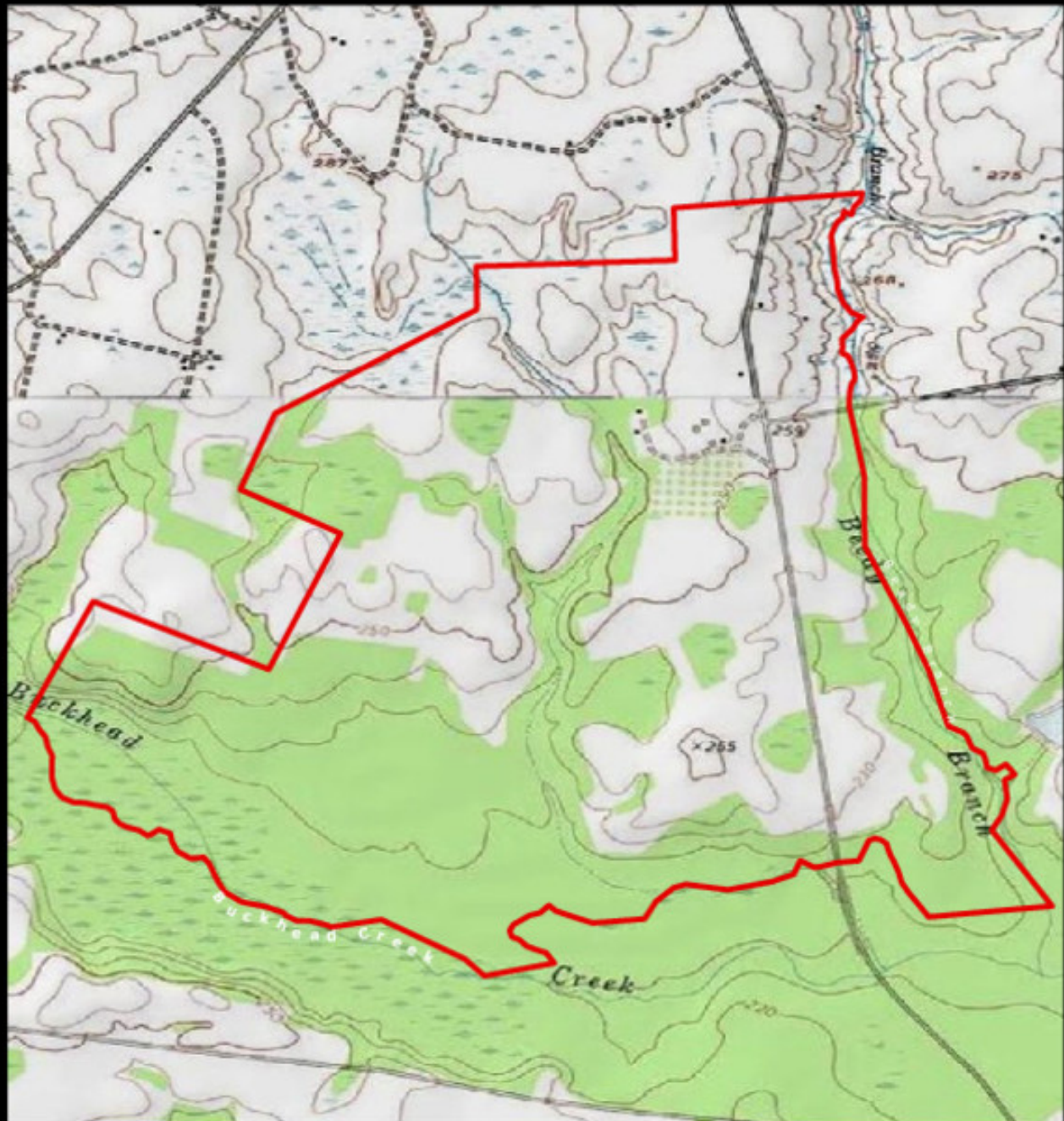
Justin Williams

This document is for informational purposes only.

www.LandandDrivers.com

© 2019





**PLANTATION PROPERTIES
&
LAND INVESTMENTS, LLC**

1207 Merchant Way, Suite 101 | Statesboro, GA 30458
912.754.1140 (R263) | 706.726.5698

Justin Williams

This document is for informational purposes only.

www.LandandDrivers.com

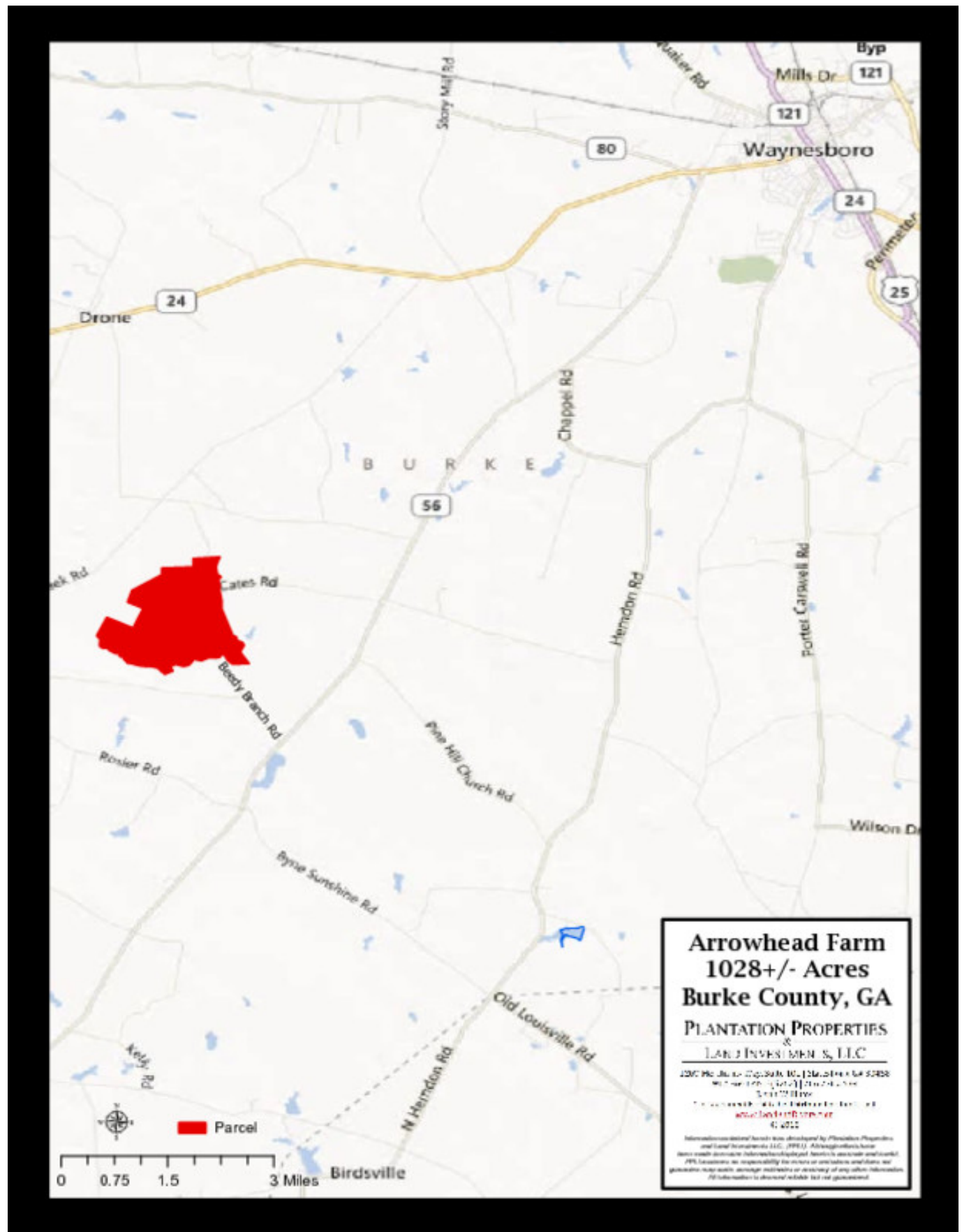
© 2019



Location

Arrowhead Farms

Published on Plantation Properties & Land Investments, LLC (<https://www.landanddrivers.com>)



Source URL: <https://www.landanddrivers.com/property/arrowhead-farms>