

Wadley Coleman - Tract 2

Published on Plantation Properties & Land Investments, LLC (<https://www.landanddrivers.com>)



Wadley Coleman - Tract 2

This 45+/- acre tract is located in Northern Emanuel County, right down from Coleman Lake. This property has highway road frontage and is well suited for anyone who enjoys hunting. Loaded with wildlife this tract is perfect for the investor or sportsman who is looking to invest. Conveniently located about 4 miles from the town of Midville and approximately 1 hour south of Augusta, GA. Call Jason today for more details or see this property. 912.764.LAND(5263)



Price: \$58,500

Property Type: Land

Status: Sold

Street/Address: Stevens crossing road

City: midville

State: Georgia

Zip code: 30441

County: emanuel

Acreage: 45

Per Acre Price: \$1,300.00

Phone Number:

Email:

Google Maps link: [View Larger Map](#)

Wadley Coleman - Tract 2

Published on Plantation Properties & Land Investments, LLC (<https://www.landanddrivers.com>)



Topo

Wadley Coleman - Tract 2

Published on Plantation Properties & Land Investments, LLC (<https://www.landanddrivers.com>)



PLANTATION PROPERTIES & LAND INVESTMENTS, LLC

1207 Merchants Way, Suite 101 | Statesboro, GA 30588
912.764.1410 (toll free) | 912.720.5000

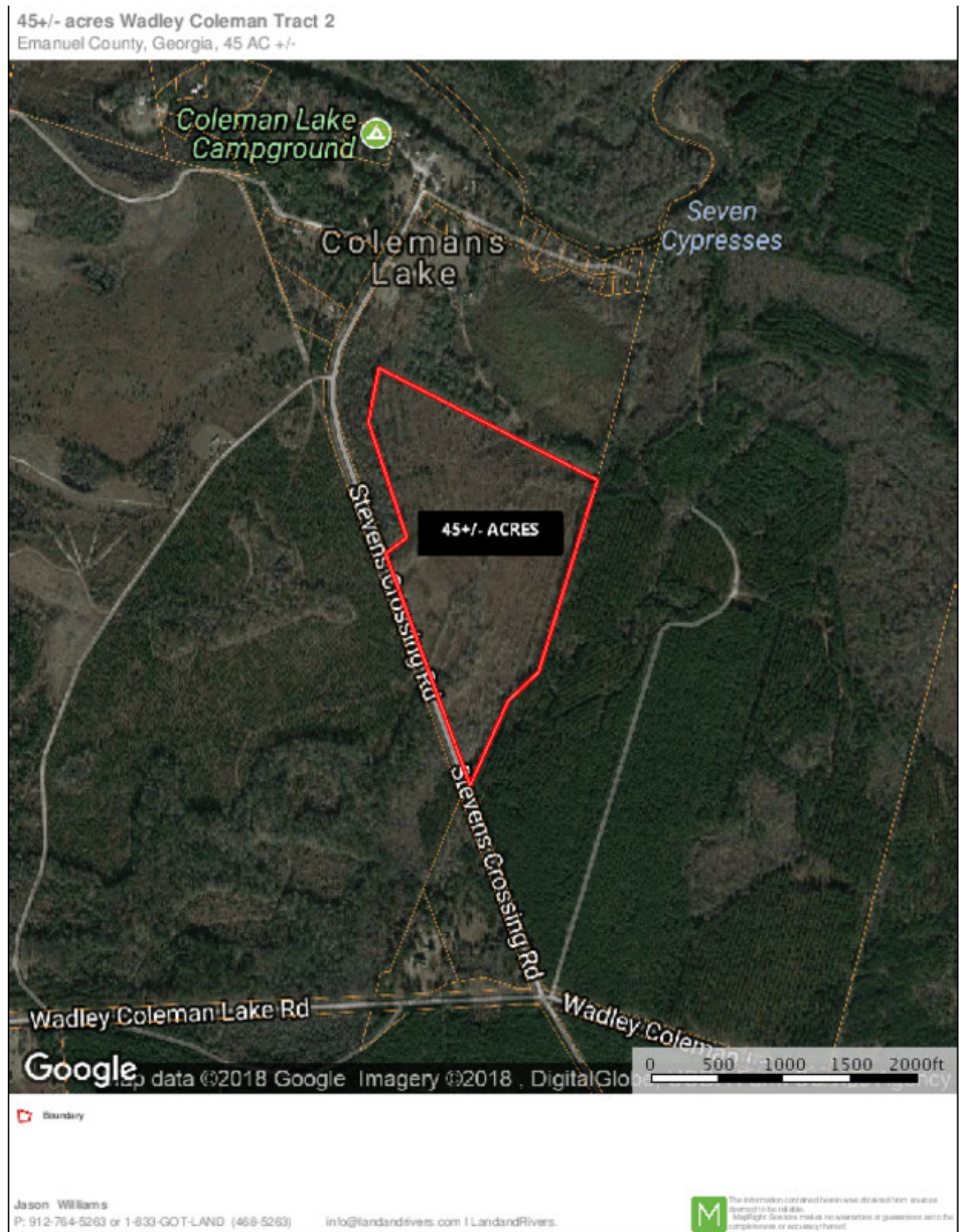
John Williams

This document is not to be distributed or reused.
www.LandandDrivers.com
© 2012



Wadley Coleman - Tract 2

Published on Plantation Properties & Land Investments, LLC (<https://www.landanddrivers.com>)



Source URL: <https://www.landanddrivers.com/property/wadley-coleman-tract-2>