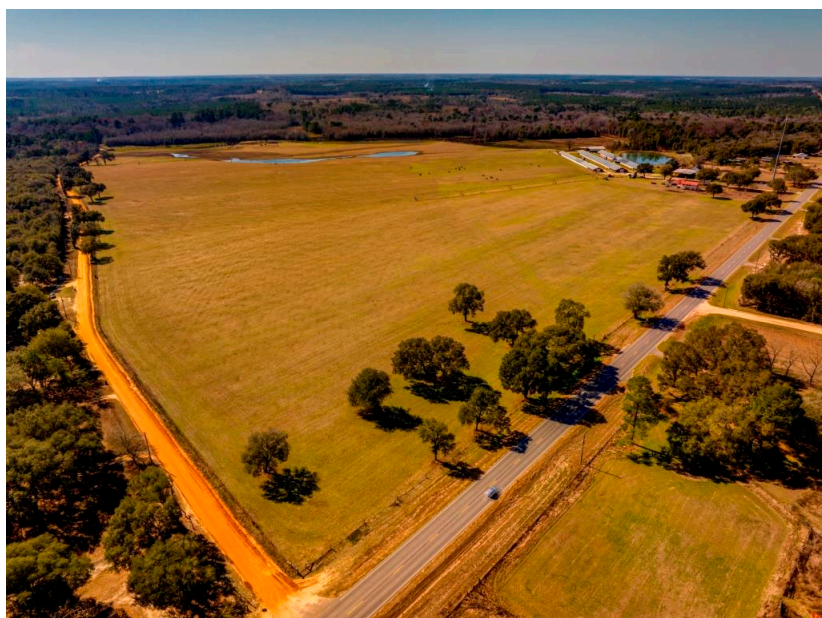




Ohooppee Chicken Farm

- 196 acres in Tattnall Co. with Ohooppee River Frontage, Irrigated AcreageHomes, Chicken Houses, Hay Barn, and Utility Shed. Irrigation & Farm Equipment Included.
- MORE DETAILS COMING SOON!



Price: \$4,500,000

Property Type: Land

Status: For Sale

Street/Address: 1110 Hwy 280 W.

City: Reidsville

State: Georgia

Zip code: 30453

County: tattnall

Acreage: 196

Per Acre Price: \$0.00

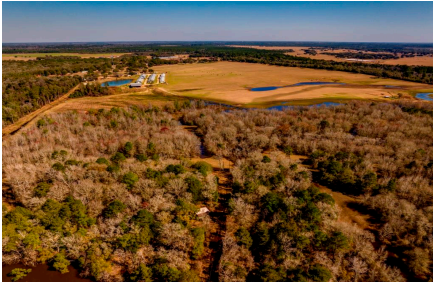
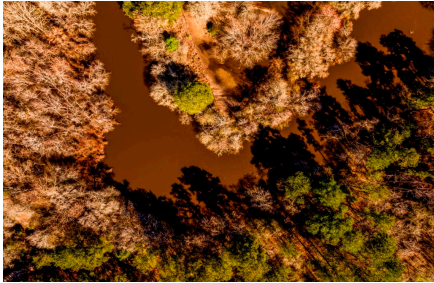
Phone Number: 912.764.LAND(5263)

Email: info@LandandRivers.com

Google Maps link: [View Larger Map](#)

Ohoopsee Chicken Farm

Published on Plantation Properties & Land Investments, LLC (<https://www.landanddrivers.com>)



Ohoopee Chicken Farm

Published on Plantation Properties & Land Investments, LLC (<https://www.landanddrivers.com>)



Ohooppee Chicken Farm

Published on Plantation Properties & Land Investments, LLC (<https://www.landanddrivers.com>)



Aerial Map

Ohoopie Chicken Farm

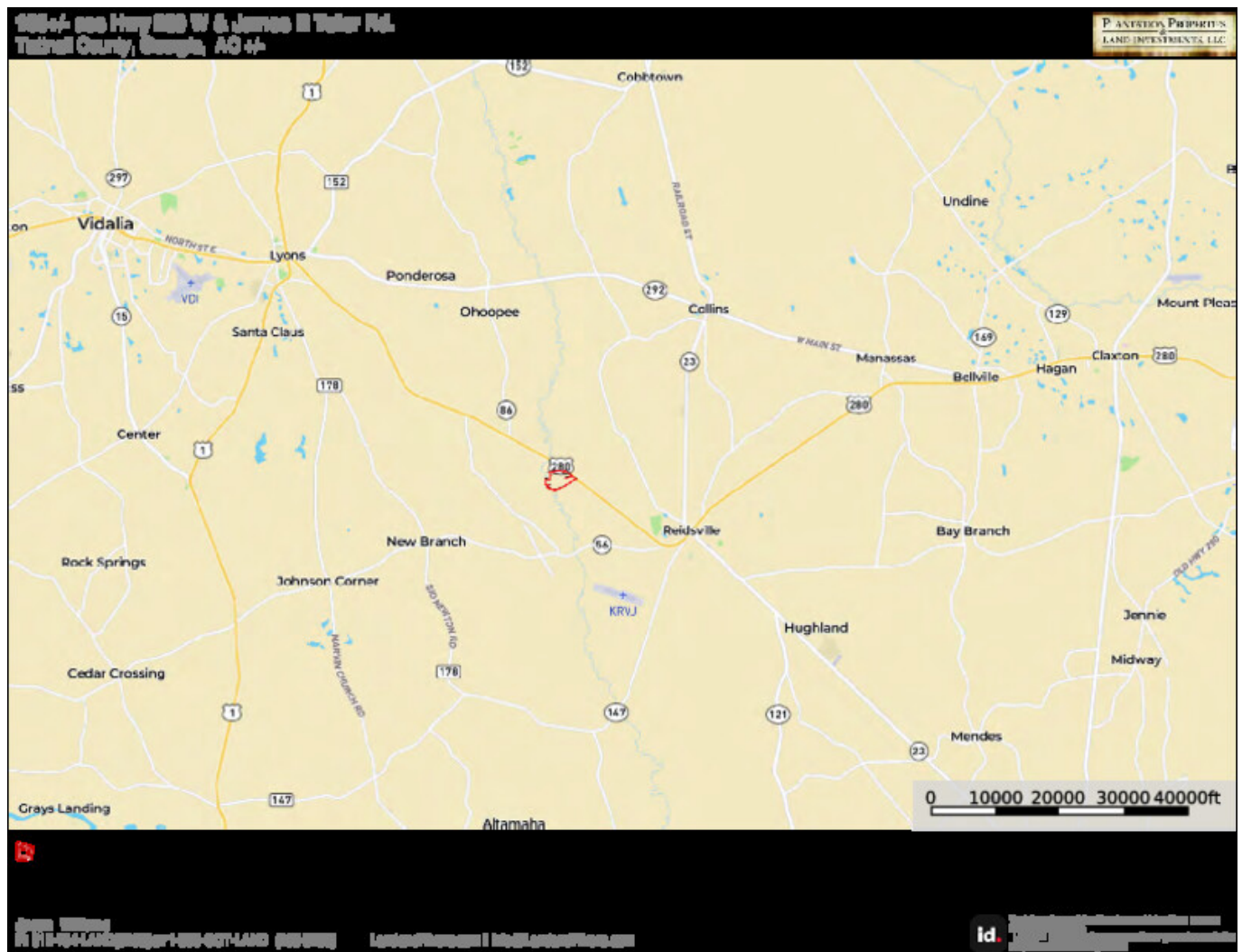
Published on Plantation Properties & Land Investments, LLC (<https://www.landanddrivers.com>)



Location Map

Ohoopée Chicken Farm

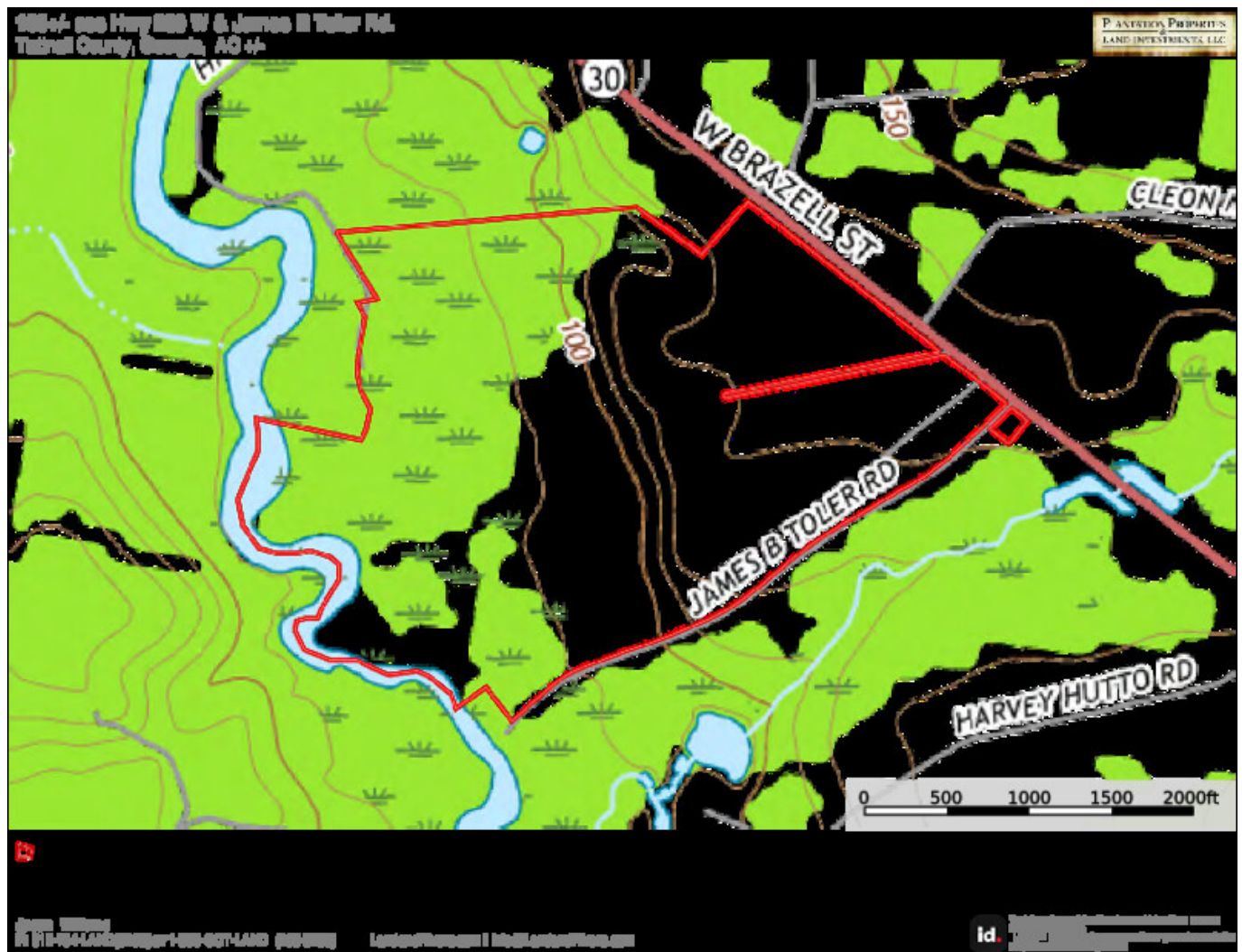
Published on Plantation Properties & Land Investments, LLC (<https://www.landanddrivers.com>)



Topo Map

Ohoopee Chicken Farm

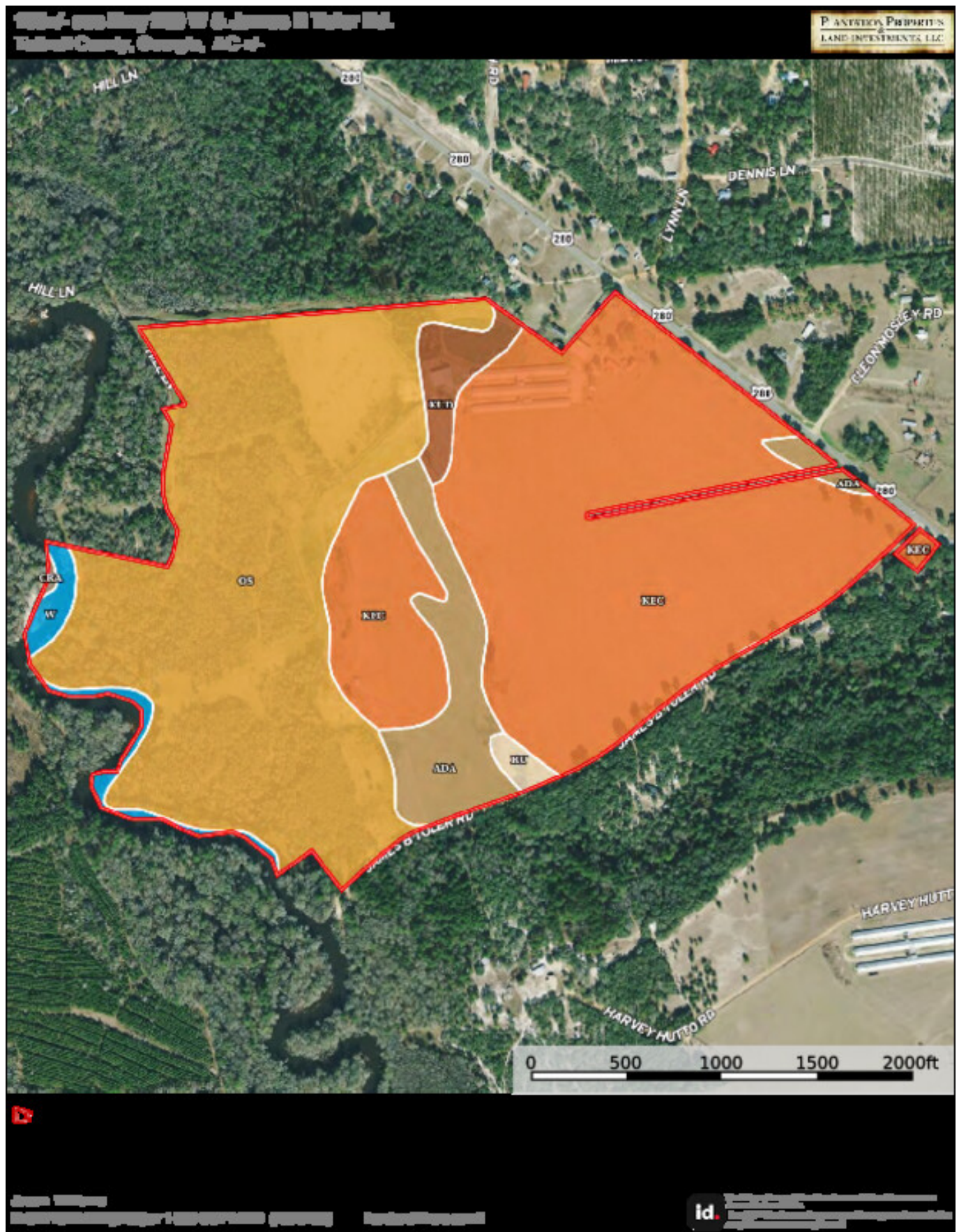
Published on Plantation Properties & Land Investments, LLC (<https://www.landanddrivers.com>)



Soil Map

Ohoopee Chicken Farm

Published on Plantation Properties & Land Investments, LLC (<https://www.landanddrivers.com>)



Source URL: <https://www.landanddrivers.com/property/ohoopee-chicken-farm>