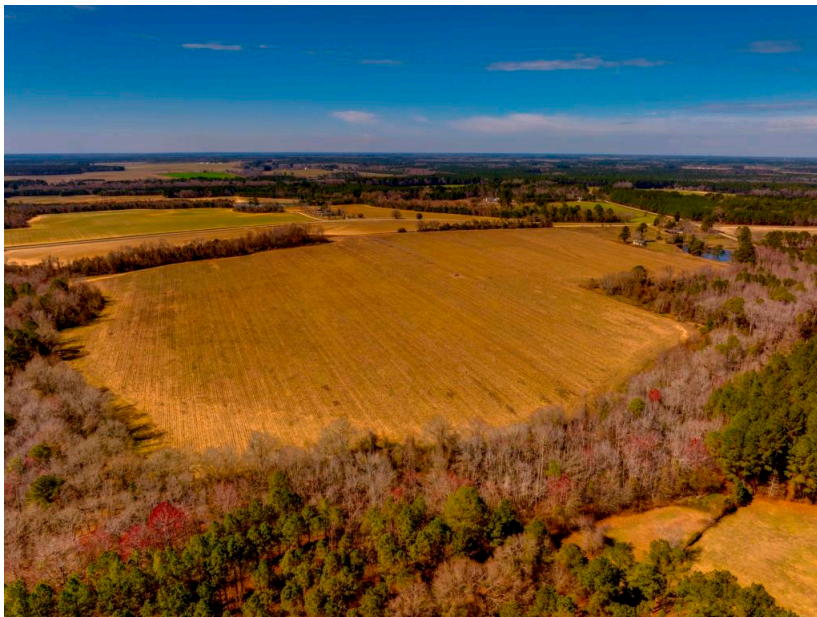




Kennedy Bridge Farm

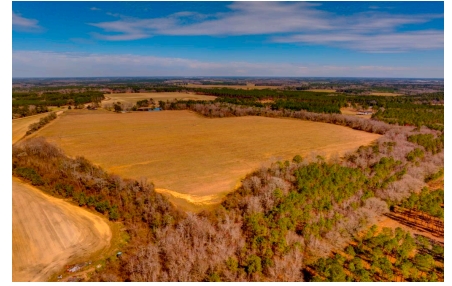
Kennedy Bridge Farm is 85± acres southwest of Statesboro, GA off of Kennedy Bridge Rd. It features 65± acres of irrigated farmland with a pivot and 6" well in place. There are woodlands bordering the southern half of the property. If you are looking for a place to start your own farm or add acreage to an existing farm operation, this is the property for you! Located just 20 minutes from Statesboro and 15 minutes from Claxton, GA. This property is also just 5 miles from I-16, where you can be in Savannah in 1 hour or Macon in just over 1.5 hours. Call us today to schedule a showing. 912.764.LAND(5263)



Price: \$1,000,000
Property Type: Land
Status: Sold
Street/Address: Kennedy Bridge Rd.
City: Register
State: Georgia
Zip code: 30452
County: bulloch
Acreage: 85
Per Acre Price: \$0.00
Phone Number: 912.764.LAND(5263)
Email: info@LandandRivers.com
Google Maps link: [View Larger Map](#)

Kennedy Bridge Farm

Published on Plantation Properties & Land Investments, LLC (<https://www.landandrivers.com>)



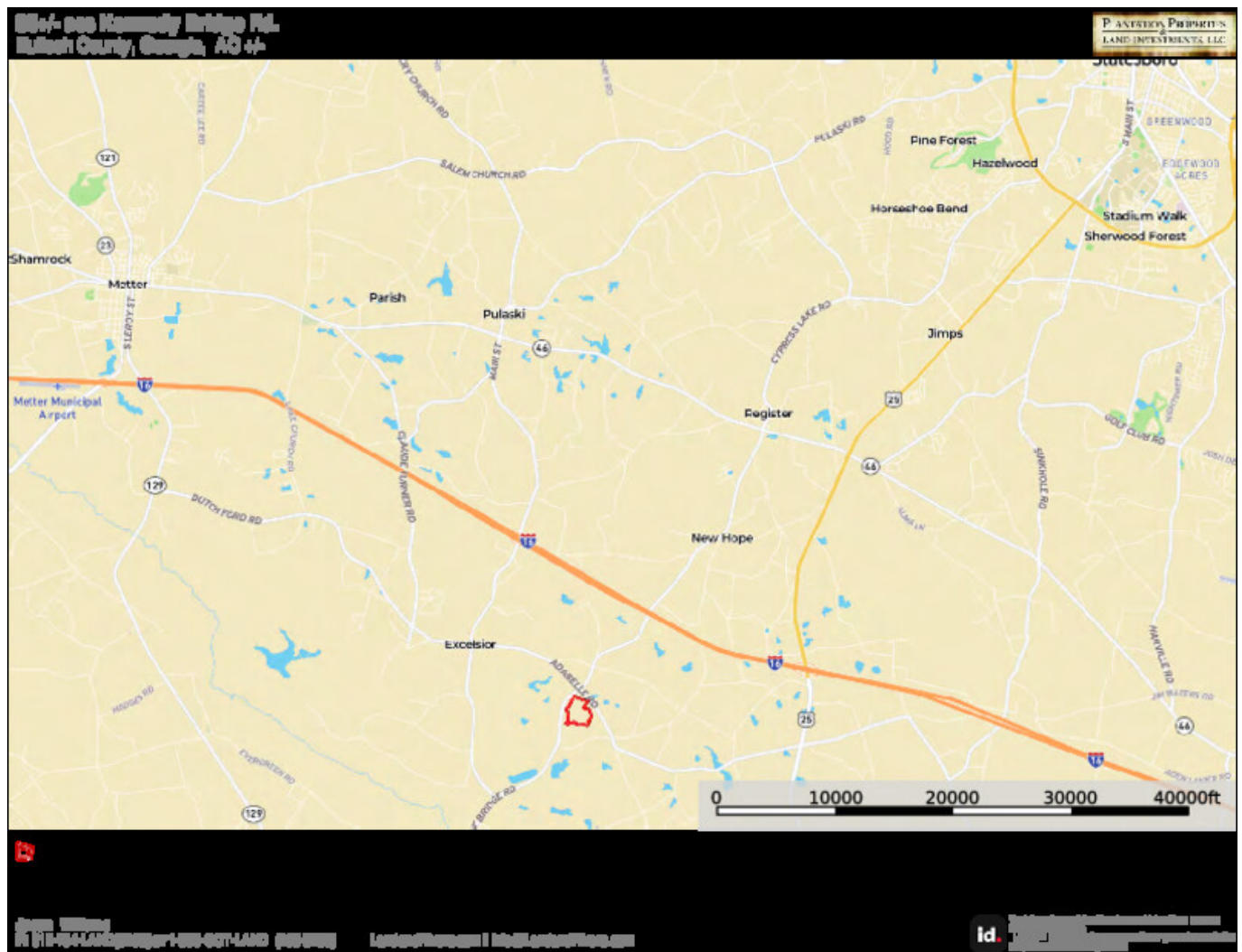
Aerial Map



Location Map

Kennedy Bridge Farm

Published on Plantation Properties & Land Investments, LLC (<https://www.landanddrivers.com>)



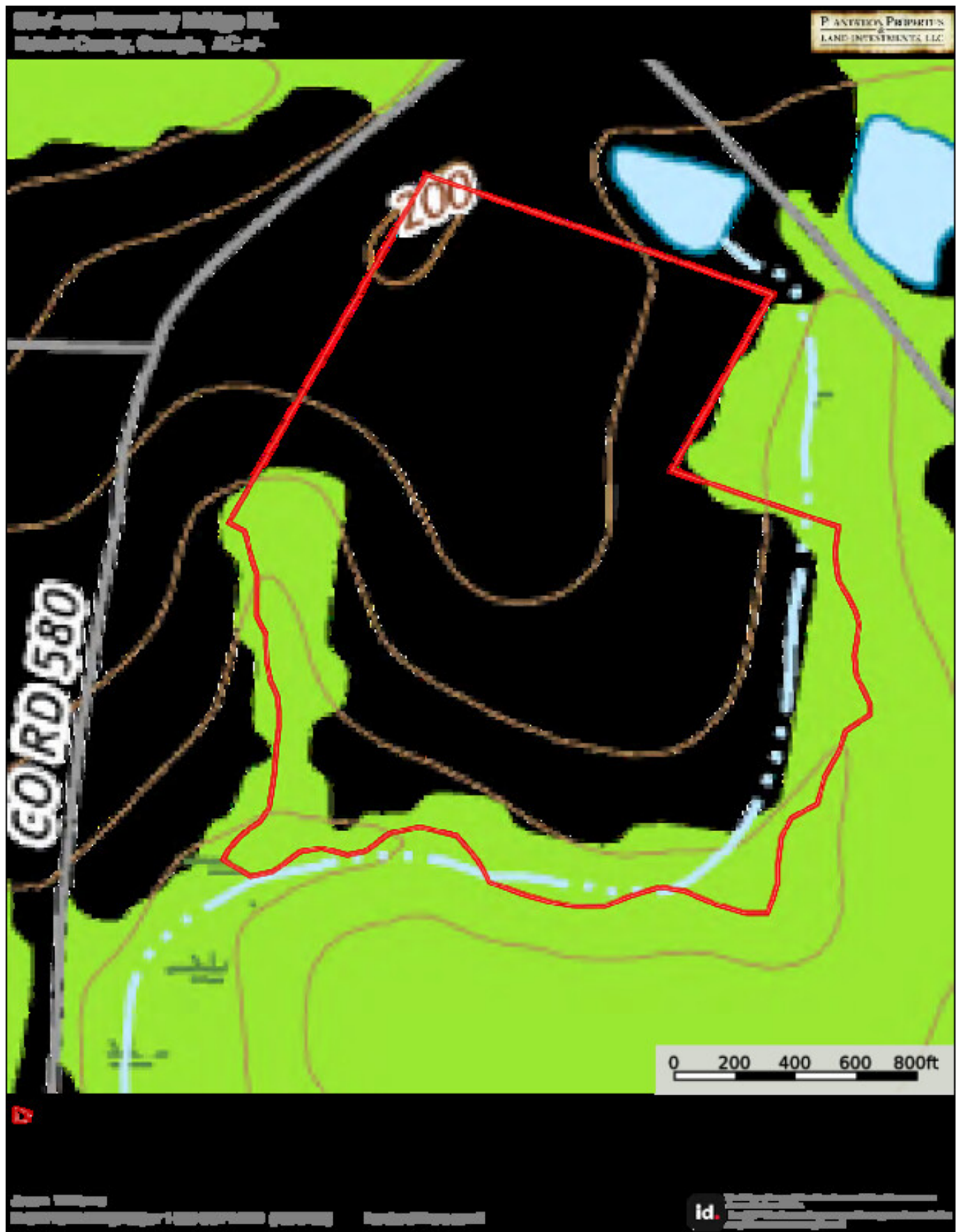
Soil Map



Topo Map

Kennedy Bridge Farm

Published on Plantation Properties & Land Investments, LLC (<https://www.landanddrivers.com>)



Source URL: <https://www.landanddrivers.com/property/kennedy-bridge-farm>