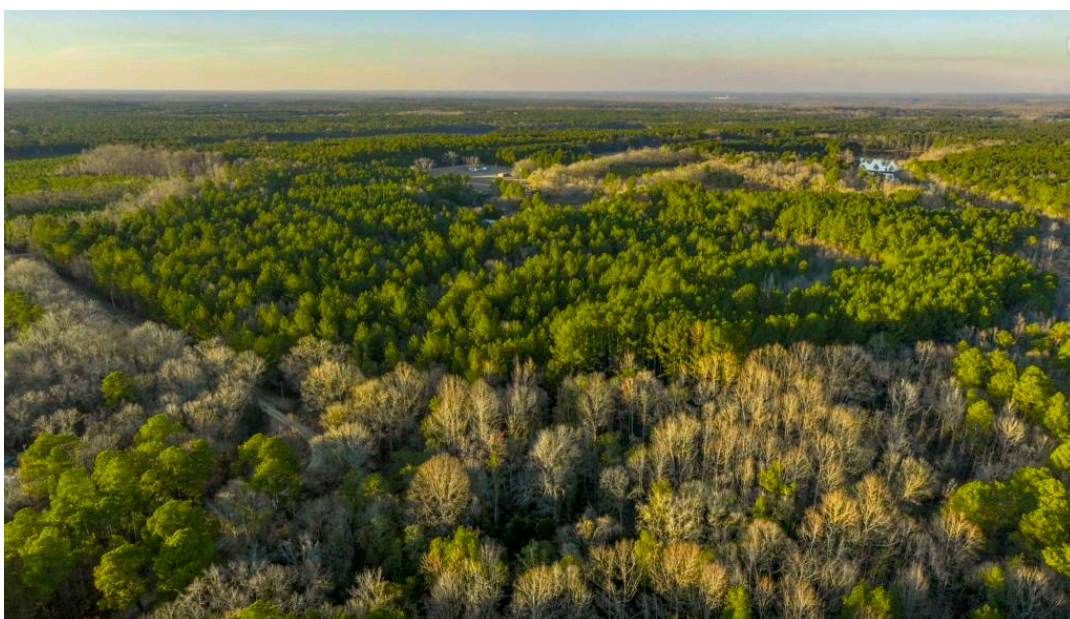




Recreational Homeplace in North Bulloch County

- Excellent Recreational Homeplace opportunity in sought after Bulloch County! Tracts such as this have been nearly non-existent in Bulloch County over the past several years.
-
- Located off of HWY 301 in North Bulloch County, this tract will give the next owner a secluded feel in an exploding area, while still being in close proximity to town.
-
- The recreational value to this tract is off the charts. There are large pockets of mature pine, old growth hardwoods, thickets for bedding area, several creeks, vast internal road system, & shared pond.
-
- Deer, turkey, & ducks have all been pursued on this tract by the current owner. There are several feeder/stand combos in place around the property. Plenty of bedding areas & natural browse are sure to hold deer on this tract. Turkeys frequent the tract, and have excellent roosting habitat in the hardwood bottom along the back property line. There are several creeks that meander along the backside of the property, and a natural duck impoundment have held ducks when wet weather occurs.
-
- Outside of the recreational aspect, the topography suggests multiple home sites. Again, with the exploding development in this area, the opportunity for homes on large acreage will continue to dwindle down as time goes on. This is a chance to have just that before it is too late. Give us a call today to see this great property for yourself!



Price: \$425,000

Property Type: Land

Status: For Sale

Recreational Homeplace in North Bulloch County

Published on Plantation Properties & Land Investments, LLC (<https://www.landanddrivers.com>)

Street/Address: 0 Maria Sorrell Road

City: Statesboro

State: Georgia

Zip code: 30461

County: bulloch

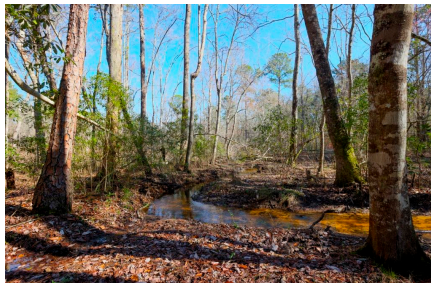
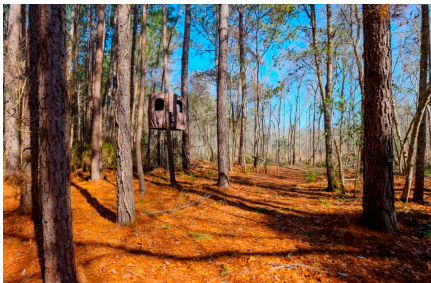
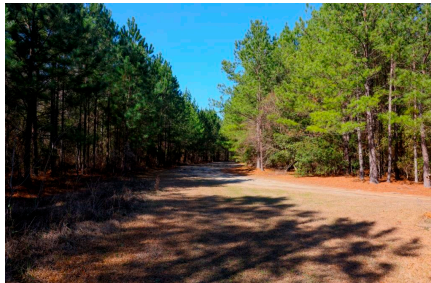
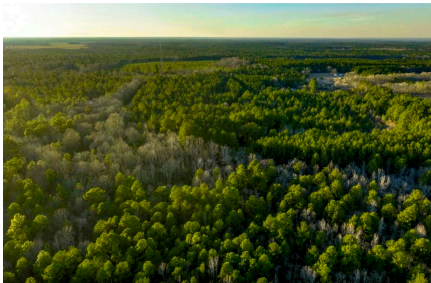
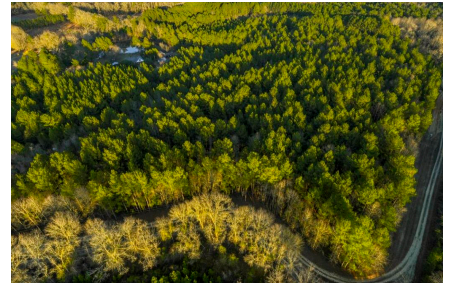
Acreage: 57

Per Acre Price: \$0.00

Phone Number: 478.972.9189

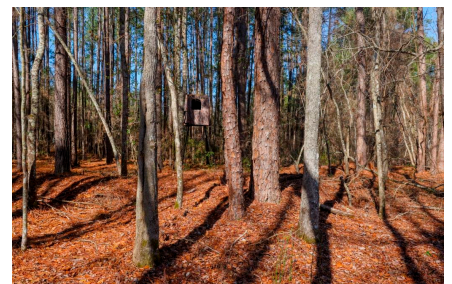
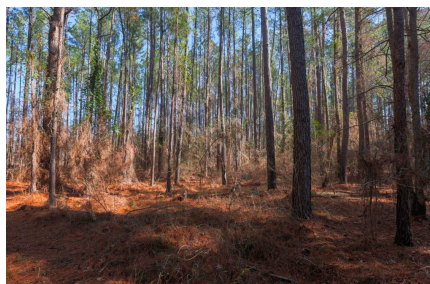
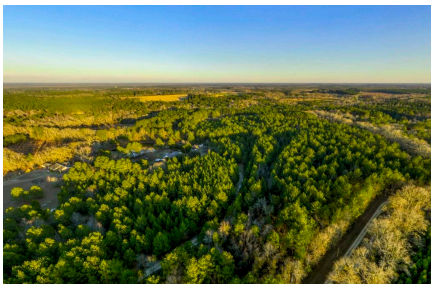
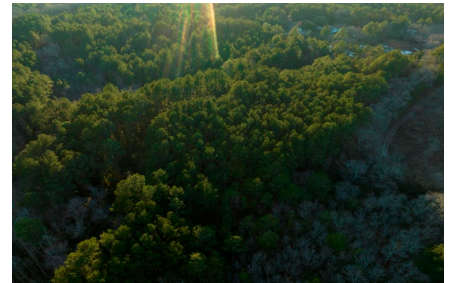
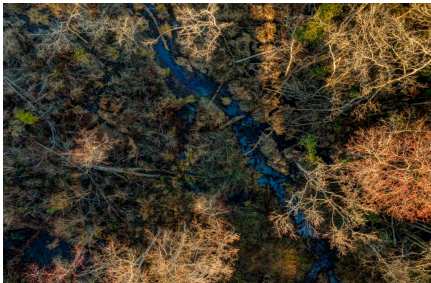
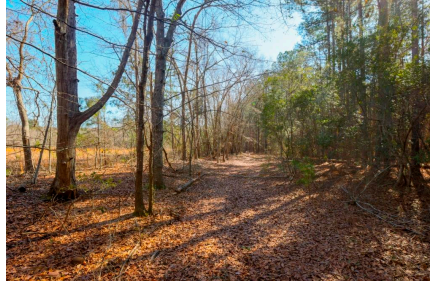
Email: cade@landanddrivers.com

Google Maps link: [View Larger Map](#)



Recreational Homeplace in North Bulloch County

Published on Plantation Properties & Land Investments, LLC (<https://www.landanddrivers.com>)



Aerial Map

Recreational Homeplace in North Bulloch County

Published on Plantation Properties & Land Investments, LLC (<https://www.landanddrivers.com>)



Topo Map

Recreational Homeplace in North Bulloch County

Published on Plantation Properties & Land Investments, LLC (<https://www.landanddrivers.com>)



Source URL: <https://www.landanddrivers.com/property/recreational-homeplace-north-bulloch-county>