



Twin Creeks

Explore the potential of this versatile 448± acre Burke County, Georgia property featuring merchantable pine and hardwood timber, frontage along Beaverdam and Brier Creeks, paved road frontage, food plots, and much more! The paved road frontage along Story Mill Rd. and excellent internal road system allows easy access throughout the property. The recreational opportunities on this property are endless. Enjoy hunting, fishing, ATV riding, and much more! In addition to fishing, the creeks provide a key water source for deer, ducks, turkey, and other wildlife. The hardwoods and pine plantation provide wildlife with natural bedding and forage areas, and combined with the food plots currently in place, this property is sure to attract loads of wildlife. Ideal timber investment combined with recreational opportunities make Twin Creeks a standout opportunity in the heart of Georgia! This property would also be a perfect place to build a cabin and make it a weekend getaway! It is located 7 miles from Waynesboro, GA and 28 miles from Augusta. Give us a call today to schedule a showing 912.764.LAND (5263)



Price: \$1,800,000
Property Type: Land
Status: For Sale
Street/Address: Story Mill Road & Spread Oak Rd.
City: Keysville
State: Georgia
Zip code: 30816
County: burke
Acreage: 448
Per Acre Price: \$4,017.00
Phone Number: 912.764.LAND(5263)
Email: info@LandandRivers.com

Twin Creeks

Published on Plantation Properties & Land Investments, LLC (<https://www.landandrivers.com>)

Google Maps link: [View Larger Map](#)



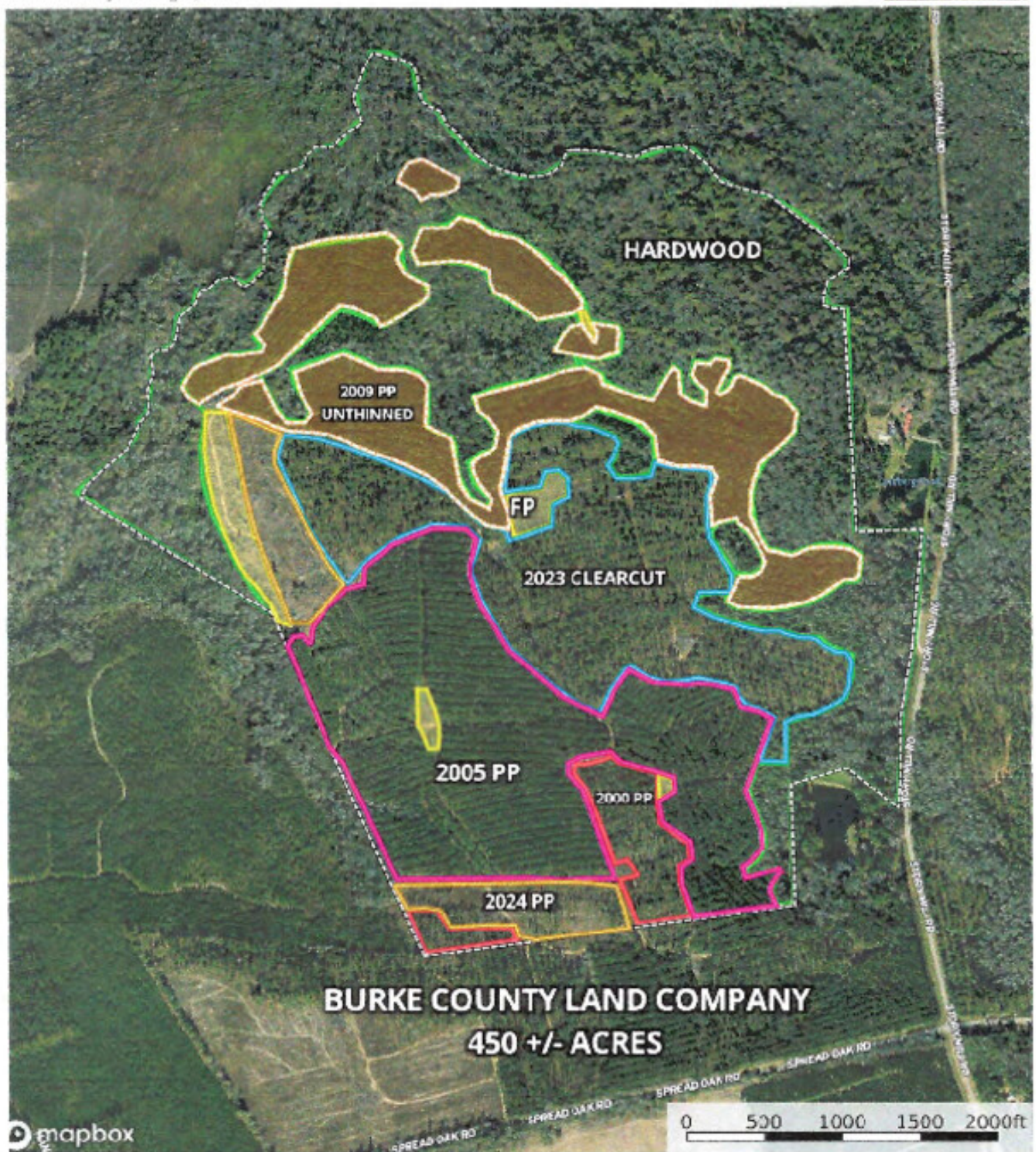
Timber Map

Twin Creeks

Published on Plantation Properties & Land Investments, LLC (<https://www.landanddrivers.com>)

Burke County Land Company
Burke County, Georgia, 450 AC +/-

PLANTATION PROPERTIES
&
LAND INVESTMENTS, LLC



2009 Planted Pine 2000 Planted Pine 2023 Clearcut Road Right Boundary 1 Boundary 2 Roadview 2000 Planted Pine 2000 Planted Pine

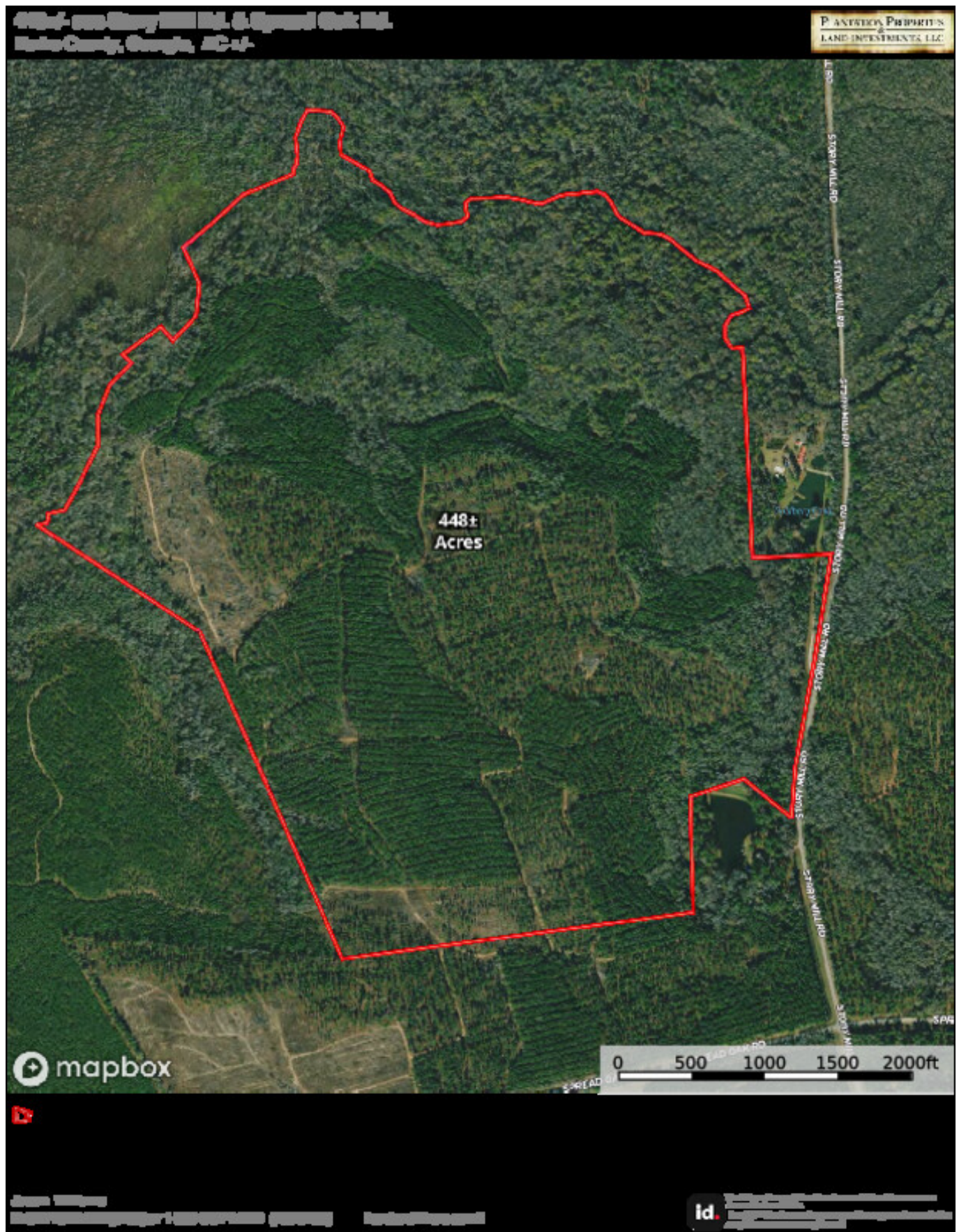
Jeremy Coulter

id. This information is provided for informational purposes only and is not intended to be used as a basis for any investment decision. Please consult with your advisor for more information.

Aerial Map

Twin Creeks

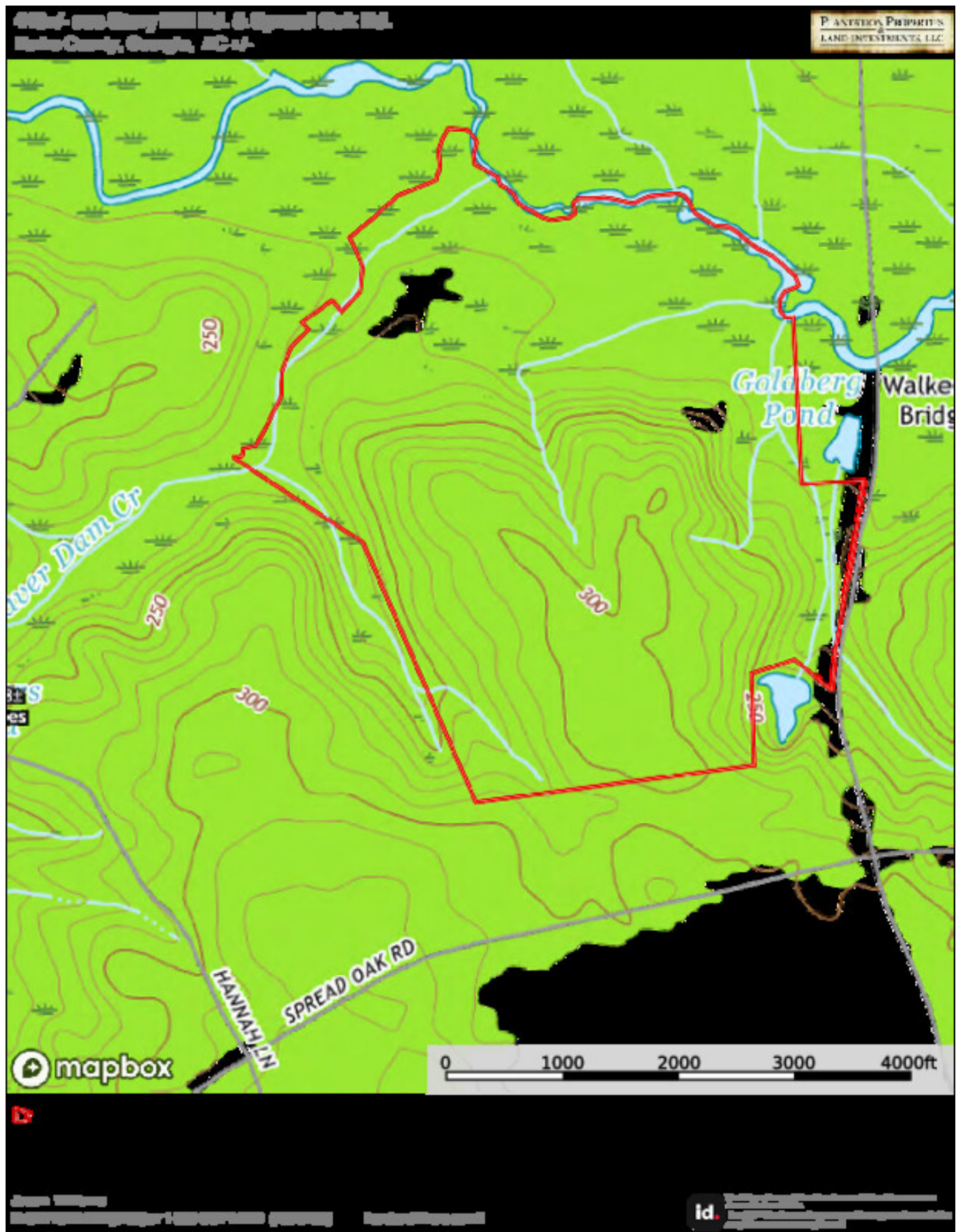
Published on Plantation Properties & Land Investments, LLC (<https://www.landanddrivers.com>)



Topo Map

Twin Creeks

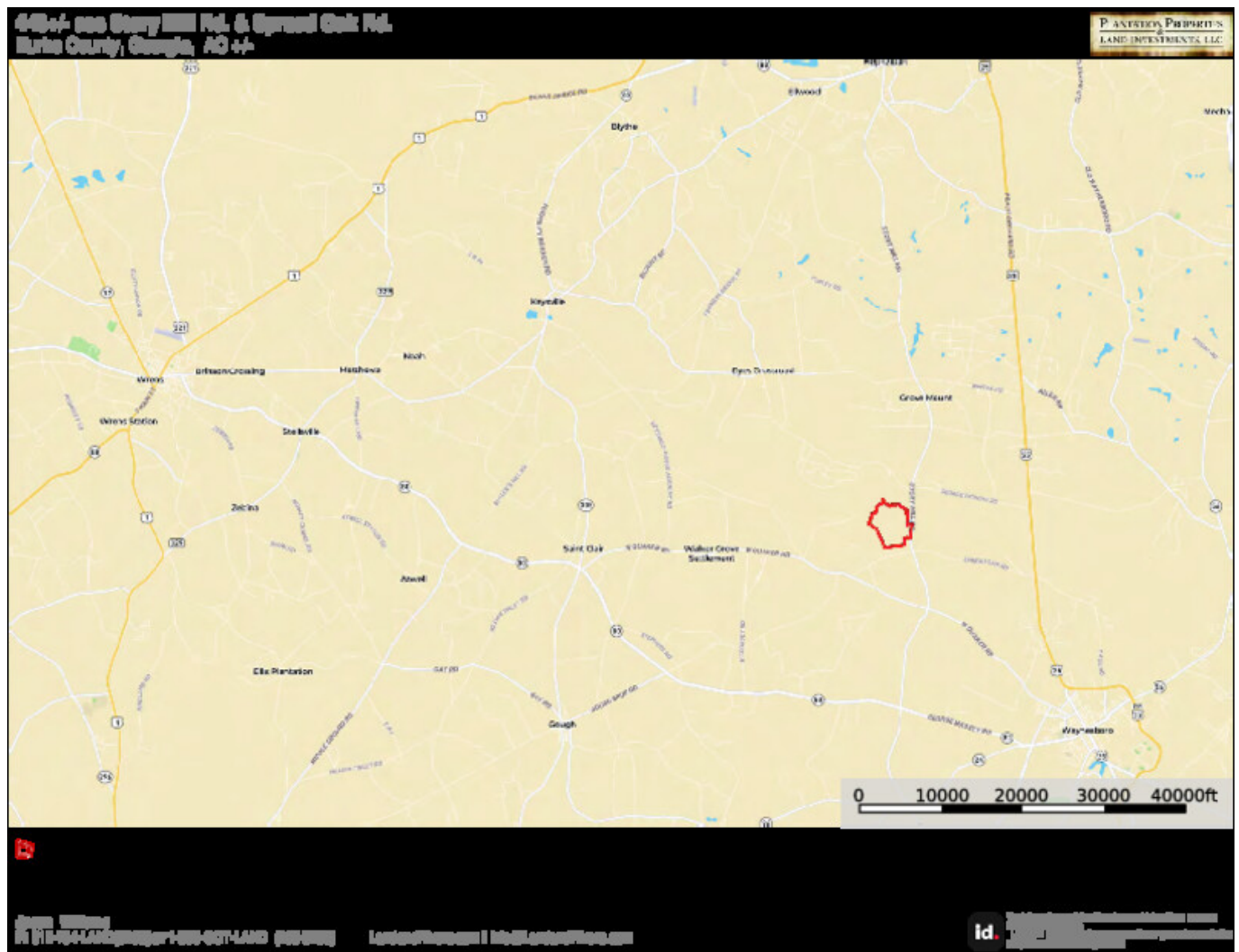
Published on Plantation Properties & Land Investments, LLC (<https://www.landanddrivers.com>)



Location Map

Twin Creeks

Published on Plantation Properties & Land Investments, LLC (<https://www.landanddrivers.com>)



Source URL: <https://www.landanddrivers.com/property/twin-creeks>