



Old Savannah Road - Tract 2

Great opportunity to own 10± acres in the heart of Jenkins County, GA. Featuring open pastures with fencing and paved road frontage along Old Savannah Road, this property offers many possibilities for potential buyers. Build your dream home and enjoy the peace of rural living, start a hobby farm with cows or horses, create a future timber investment with pine plantation, or potential development for multiple homes. More acreage available! Located 6 miles southwest of Millen, 1 hour from Augusta, and 1.5 hours from Savannah. Contact us today to arrange a showing. 912.764.LAND(5263)



Price: \$76,000

Property Type: Land

Status: For Sale

Street/Address: W Old Savannah Rd & Rosemary Church Rd

City: millen

State: Georgia

Zip code: 30442

County: jenkins

Acreage: 10

Per Acre Price: \$7,600.00

Phone Number: 912.764.LAND(5263)

Email: info@LandandRivers.com

Google Maps link: [View Larger Map](#)

Old Savannah Road - Tract 2

Published on Plantation Properties & Land Investments, LLC (<https://www.landanddrivers.com>)



Subdivided Aerial Map

Old Savannah Road - Tract 2

Published on Plantation Properties & Land Investments, LLC (<https://www.landanddrivers.com>)



Location Map

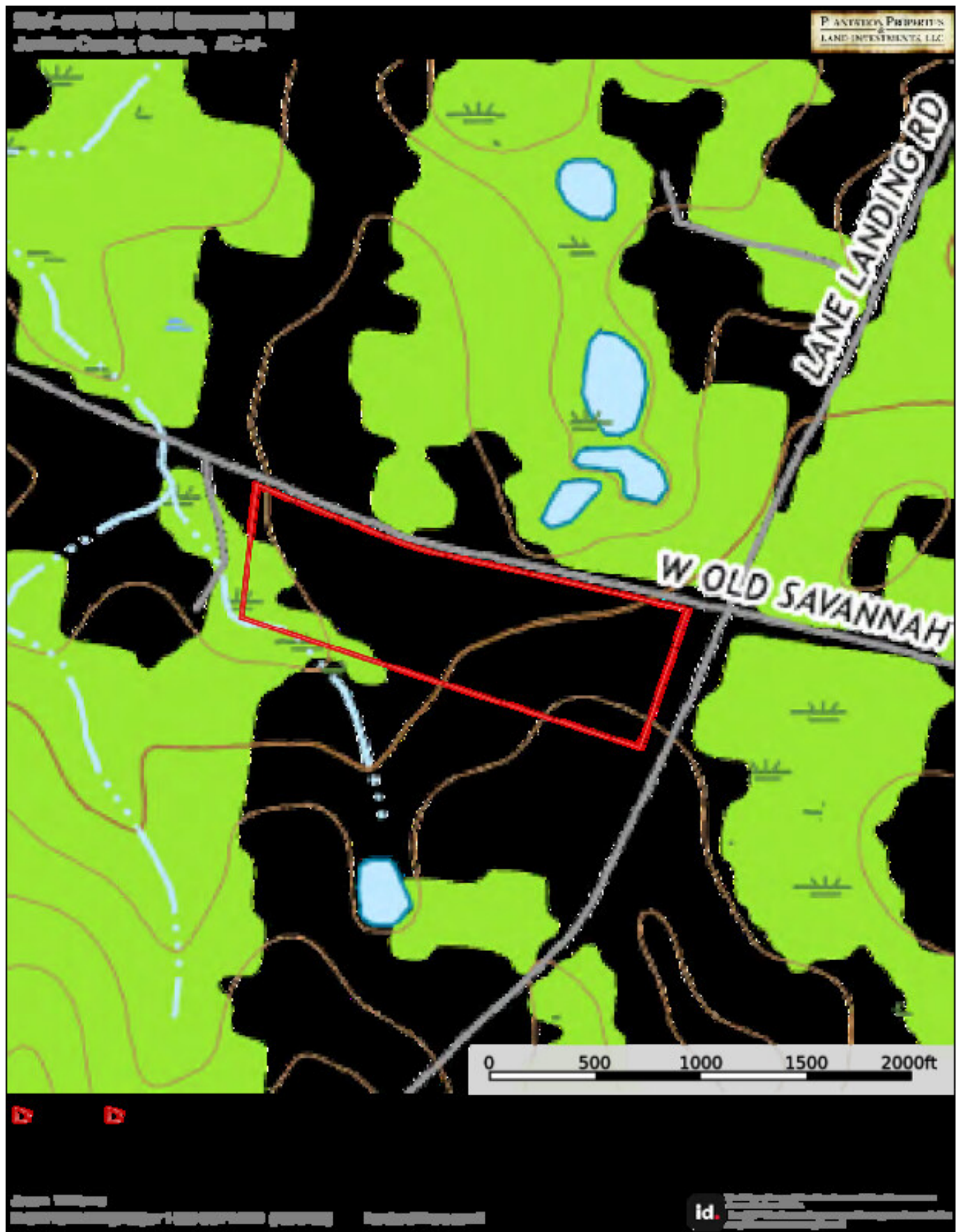
Published on Plantation Properties & Land Investments, LLC (<https://www.landandrivers.com>)

The map displays the area around Emmalane, Georgia. Key roads include Old Midville Rd, Old Louisville Rd, Old Savannah Rd, and Old Louisville Rd. Water bodies such as the Savannah River and Butts Landing are shown. A red rectangular area of interest is highlighted on Old Savannah Rd. The map includes a scale bar indicating distances up to 8000 feet.

Page 4 of 5

Old Savannah Road - Tract 2

Published on Plantation Properties & Land Investments, LLC (<https://www.landanddrivers.com>)



Source URL: <https://www.landanddrivers.com/property/old-savannah-road-tract-2>