



Rozar Farms

Rozar Farms is located in central Georgia. It is just outside of the small town of Eastman. The location makes for convenient access from Macon, Savannah, and Atlanta. Eastman has all of the necessities such as grocery stores and restaurants. The properties location just off of HWY 341 also allows for direct access to the Golden Isles area of St. Simons, Jeckyll Island, and Brunswick. The property is gently rolling with no extreme elevation changes. Power is located along the county maintained road that fronts the property. The property is dotted with pine and oak trees and is almost totally upland with only a few seasonal drains within its boundaries. These properties are being offered in tracts of 10 or 20 acres. Larger tracts are also available with Seller approval. This property will provide a quiet rural retreat for years to come. If you are looking for property for a country retreat or a permanent home in the country, you owe it to yourself to take a look at these tracts. Seller will consider owner financing on these properties.



Price: \$59,000

Property Type: Land

Status: Sold

Street/Address: Rozar Goolsby Road

City: Eastman

State: Georgia

Zip code: 31023

County: dodge

Acreage: 10

Per Acre Price: \$5,900.00

Phone Number: (478)279-2148

Email: michael@landanddrivers.com

Google Maps link: [View Larger Map](#)

Rozar Farms

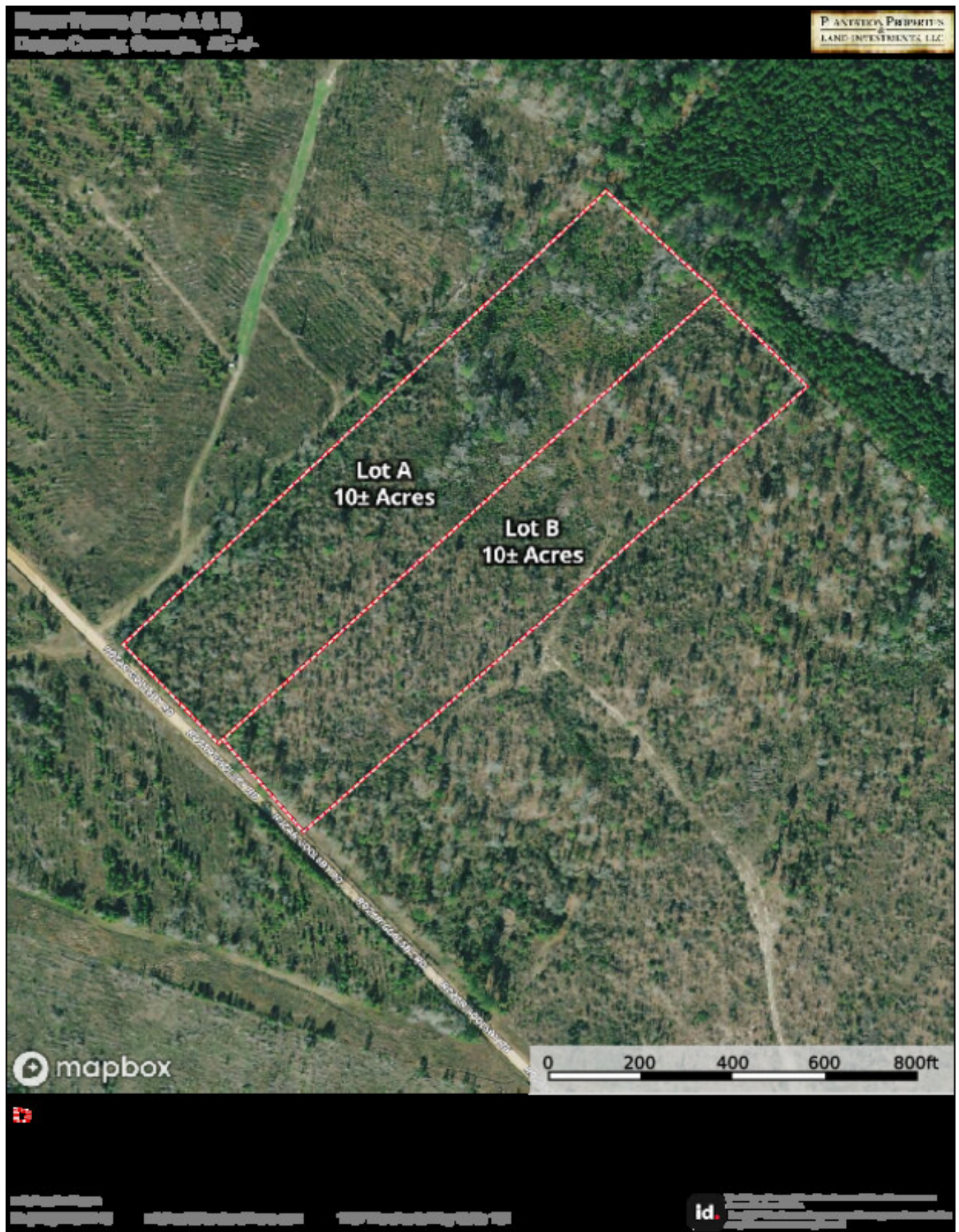
Published on Plantation Properties & Land Investments, LLC (<https://www.landanddrivers.com>)



Aerial Map

Rozar Farms

Published on Plantation Properties & Land Investments, LLC (<https://www.landanddrivers.com>)



Location Map

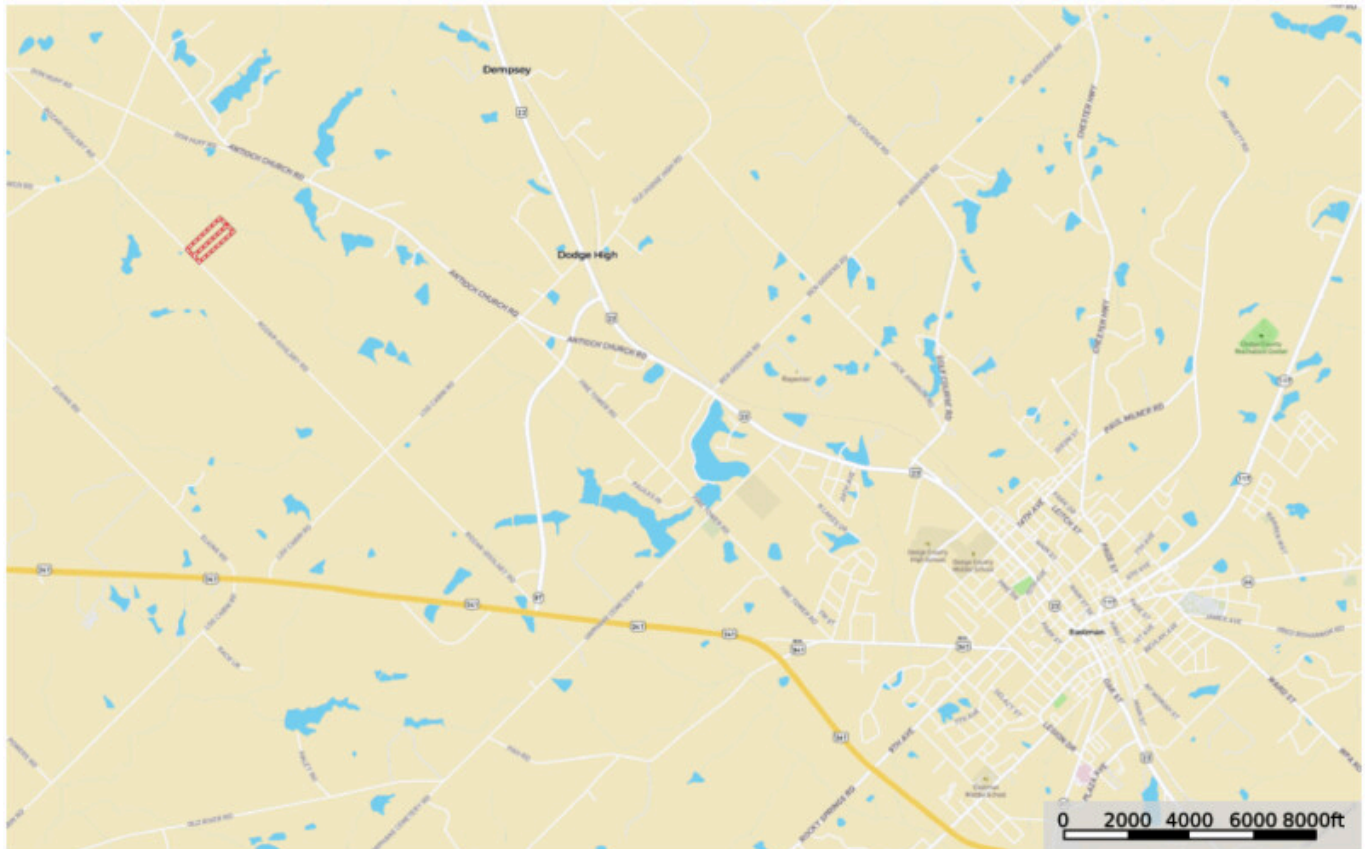
Rozar Farms

Published on Plantation Properties & Land Investments, LLC (<https://www.landanddrivers.com>)

Rozar Farms

Dodge County, Georgia, 10 AC +/-

PLANTATION PROPERTIES
&
LAND INVESTMENTS, LLC



michael wilson
P: (478) 279-2148

michael@landandinvestments.com

1207 Merchants Way Suite 101 Statesboro, GA 30458

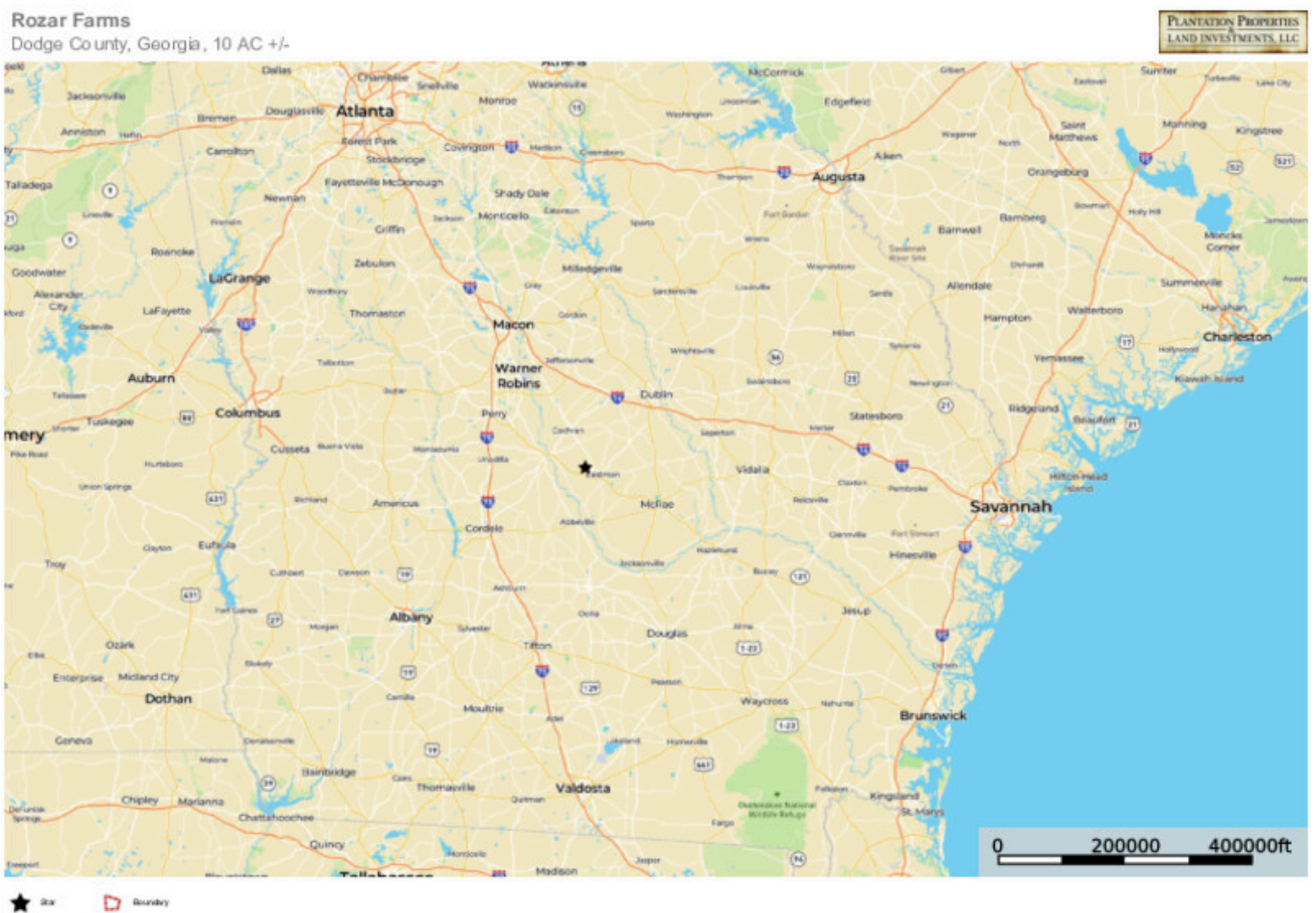


The information contained herein was obtained from sources deemed to be reliable. Landal® does not make any warranties or guarantees as to the completeness or accuracy thereof.

Location Map State

Rozar Farms

Published on Plantation Properties & Land Investments, LLC (<https://www.landanddrivers.com>)



michael wilson
P: (478) 279-2148 michael@landanddrivers.com 1207 Merchants Way Suite 101 Statesboro, GA 30458

id. The information contained herein was obtained from sources deemed to be reliable. Landall® does not make any warranties or guarantees as to the completeness or accuracy thereof.

Source URL: <https://www.landanddrivers.com/property/rozar-farms>