

Doyle Drive

Published on Plantation Properties & Land Investments, LLC (<https://www.landanddrivers.com>)



Doyle Drive

This 46.8 acre parcel just off Hwy 21 in Screven County would make a good hunting tract or homesite. The majority of the property has 5 year old pine regeneration with a small hardwood drain in the middle. There is a power line running through the northwest corner of the land. Call today to see this great property.



Price: \$185,000

Property Type: Land

Status: Sold

Street/Address: 0 Doyle Dr

City: Sylvania

State: Georgia

Zip code: 30467

County: screven

Acreage: 47

Per Acre Price: \$4,000.00

Phone Number: 912.978.0890

Email: jforehand@landanddrivers.com

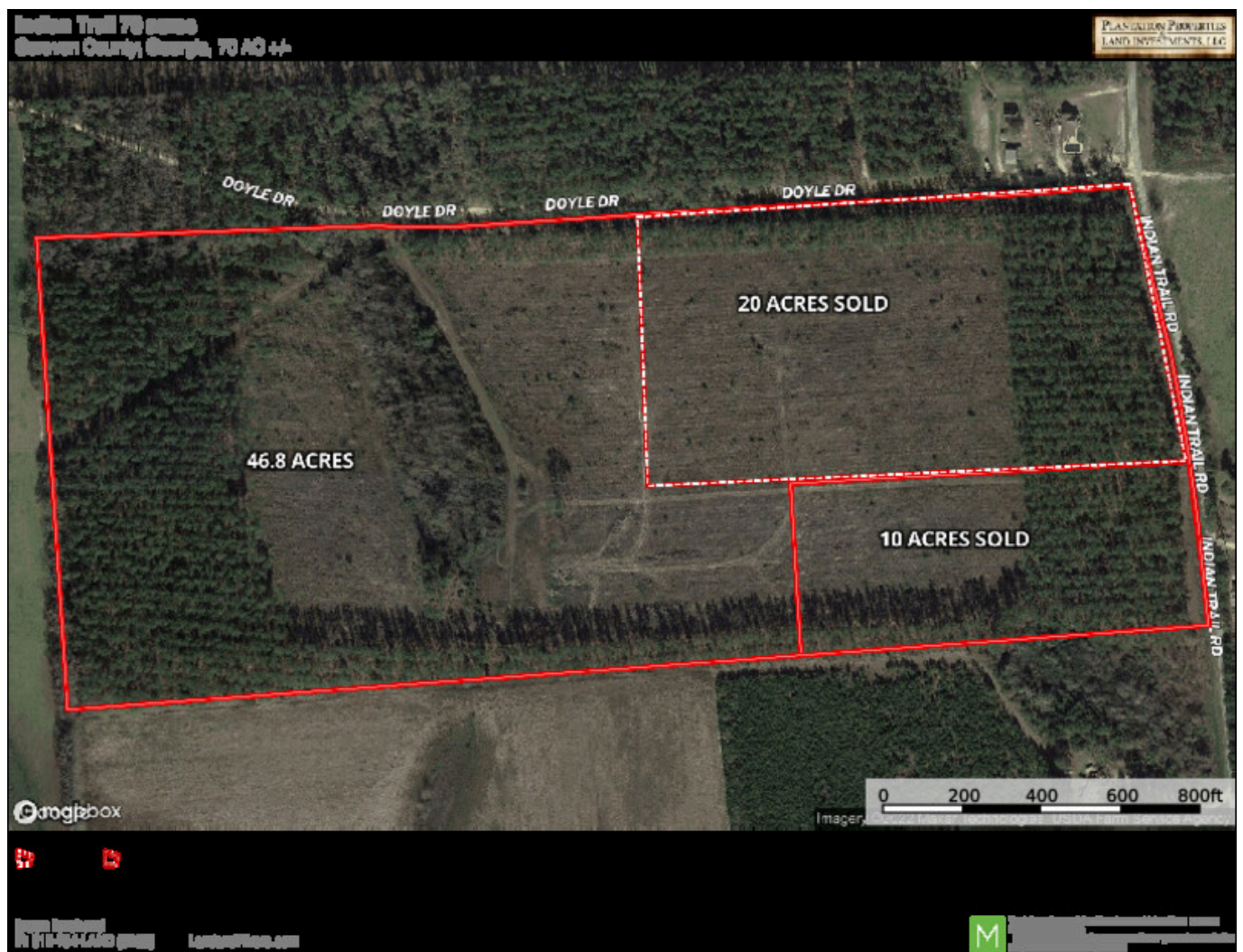
Google Maps link: [View Larger Map](#)

Doyle Drive

Published on Plantation Properties & Land Investments, LLC (<https://www.landanddrivers.com>)



Aerial Map



Source URL: <https://www.landanddrivers.com/property/doyle-drive>