

## Friendship Pines - Tract 4

Published on Plantation Properties & Land Investments, LLC (<https://www.landandrivers.com>)

---



## Friendship Pines - Tract 4

Tract 4 is a 29± acre tract with access from Cork Pond Rd. The majority of the property is made up of young planted pines with a few patches of hardwood/ pine mix. The tract would make for a great homesite, weekend retreat, or recreational tract. Call us today to schedule a viewing! 912.764.LAND(5263)

\*/



**Price:** \$101,500

**Property Type:** Land

**Status:** Sold

**Street/Address:** Friendship Rd.

**City:** Sylvania

**State:** Georgia

**Zip code:** 30467

**County:** screven

**Acreage:** 29

**Per Acre Price:** \$3,500.00

**Phone Number:** 912.764.LAND(5263)

**Email:** [info@LandandRivers.com](mailto:info@LandandRivers.com)

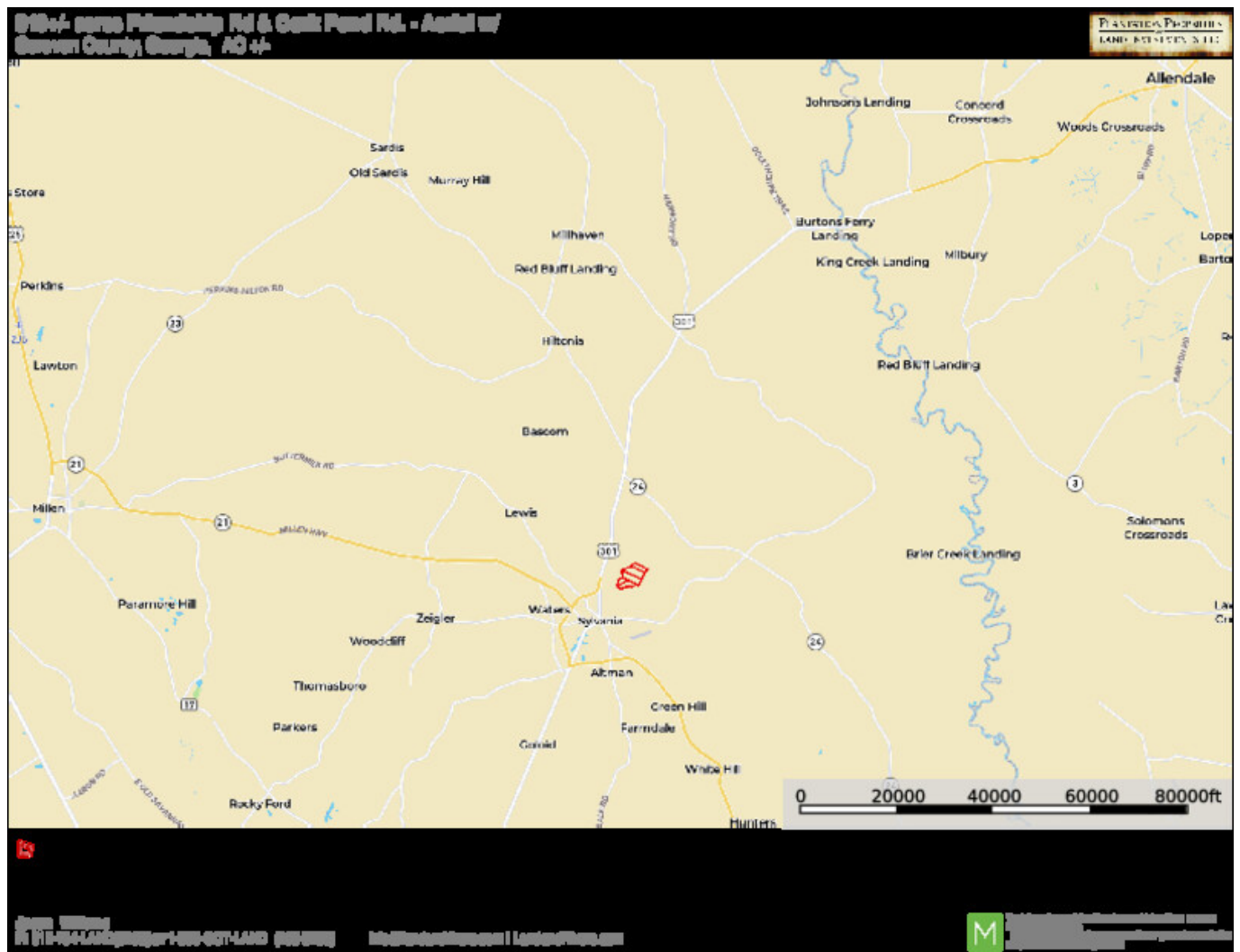
**Google Maps link:** [View Larger Map](#)

## Friendship Pines - Tract 4

Published on Plantation Properties & Land Investments, LLC (<https://www.landanddrivers.com>)



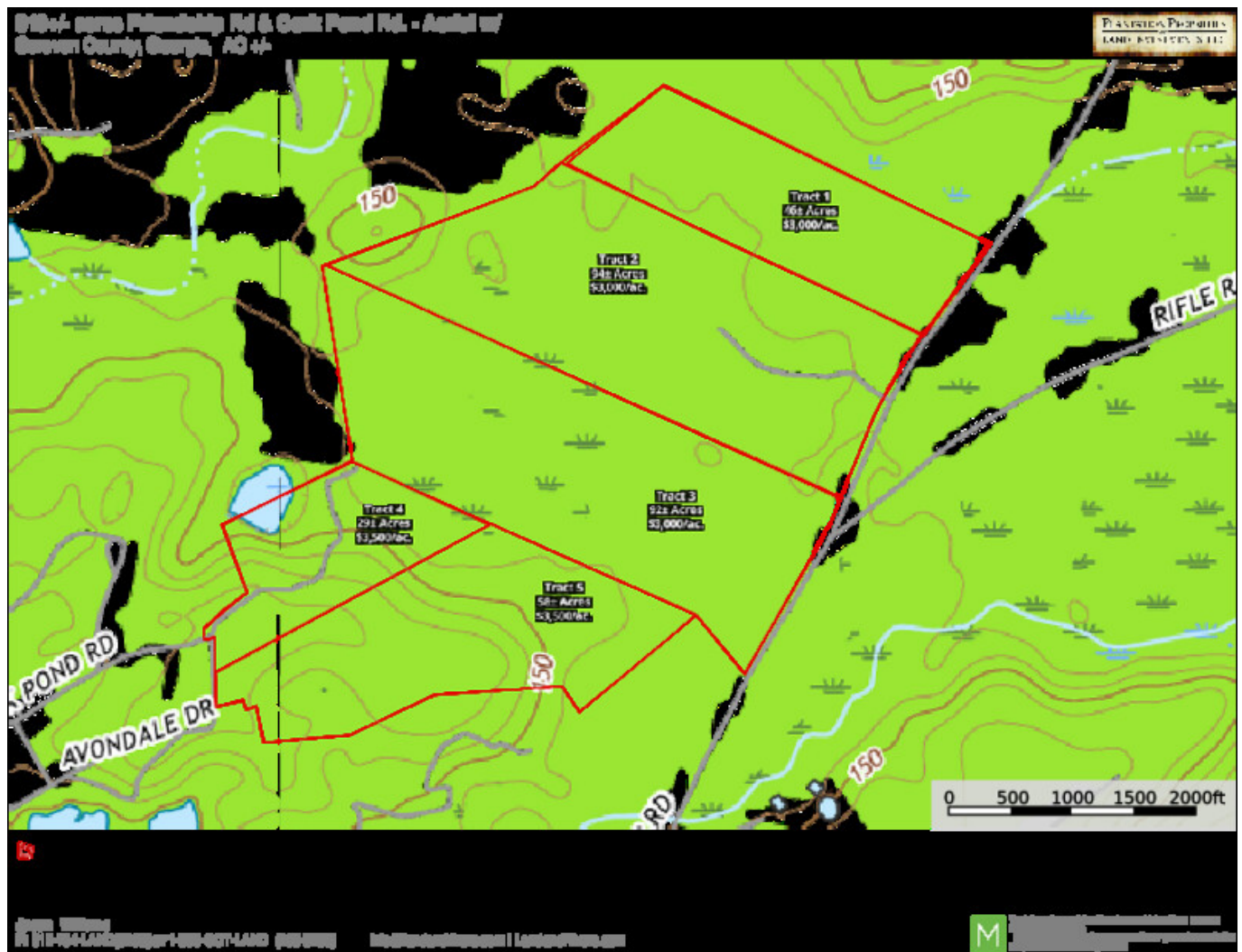
## Location Map



## Topo Map

## Friendship Pines - Tract 4

Published on Plantation Properties & Land Investments, LLC (<https://www.landanddrivers.com>)



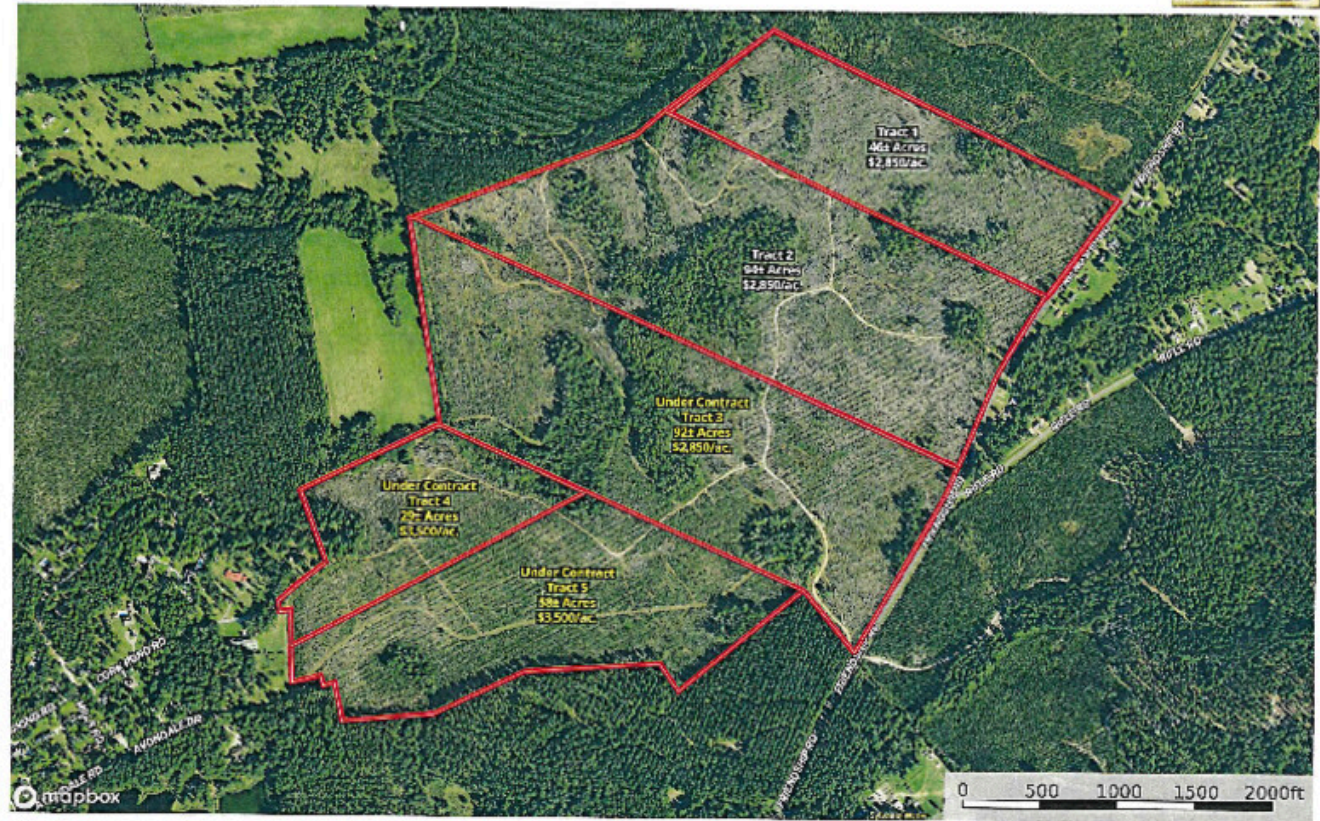
## Aerial Map



## Friendship Pines - Tract 4

Published on Plantation Properties & Land Investments, LLC (<https://www.landanddrivers.com>)

3194+/- acres Friendship Rd & Cork Pond Rd. - Divided  
Scraper County, Georgia, AC 47-



Jaden Williams  
P. 770-734-LANDISCOVER | 1-800-607-LAND | (606) 325-5511 | [info@landanddrivers.com](mailto:info@landanddrivers.com) | [landanddrivers.com](https://www.landanddrivers.com)

**M** This is a preliminary map and should not be used for legal purposes. It is intended for informational purposes only. The map is not a guarantee of accuracy and is subject to change without notice. The map is not a representation of the actual land and should not be used for legal purposes.

Source URL: <https://www.landanddrivers.com/property/friendship-pines-tract-4>