

Friendship Pines - Tract 3

Published on Plantation Properties & Land Investments, LLC (<https://www.landandrivers.com>)



Friendship Pines - Tract 3

Tract 3 is a 92± acre tract with road frontage along Friendship Rd. The property is made up of young planted pines and has a good amount of old growth hardwood/ pine mix. This lot has a good road system throughout allowing you to utilize every bit of the property. This tract would make for an ideal hunting retreat or homesite. Call us today to schedule a viewing! 912.764.LAND(5263)

*/



Price: \$262,200

Property Type: Land

Status: Sold

Street/Address: Friendship Rd.

City: Sylvania

State: Georgia

Zip code: 30467

County: screven

Acreage: 92

Per Acre Price: \$2,850.00

Phone Number: 912.764.LAND(5263)

Email: info@LandandRivers.com

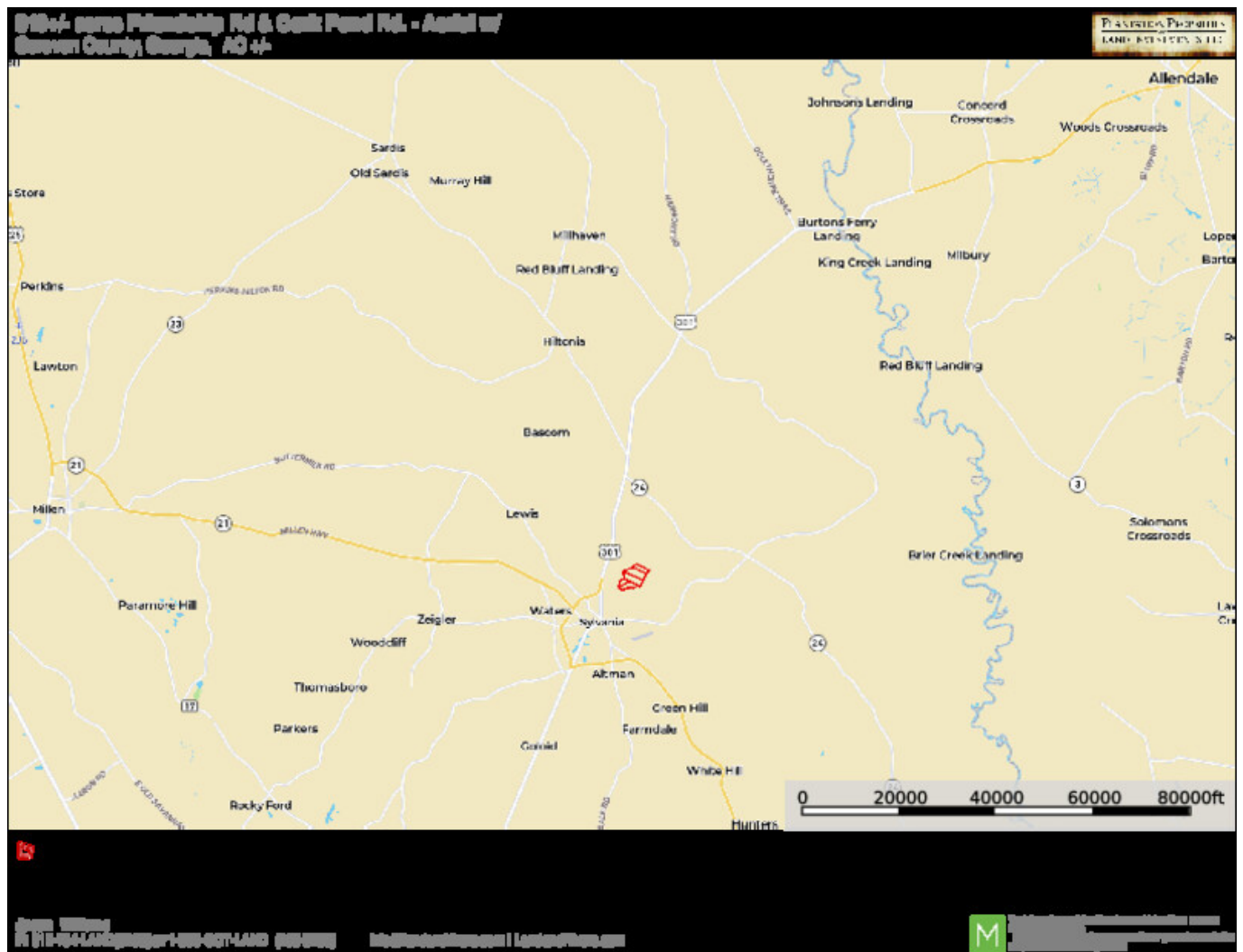
Google Maps link: [View Larger Map](#)

Friendship Pines - Tract 3

Published on Plantation Properties & Land Investments, LLC (<https://www.landandrivers.com>)



Location Map

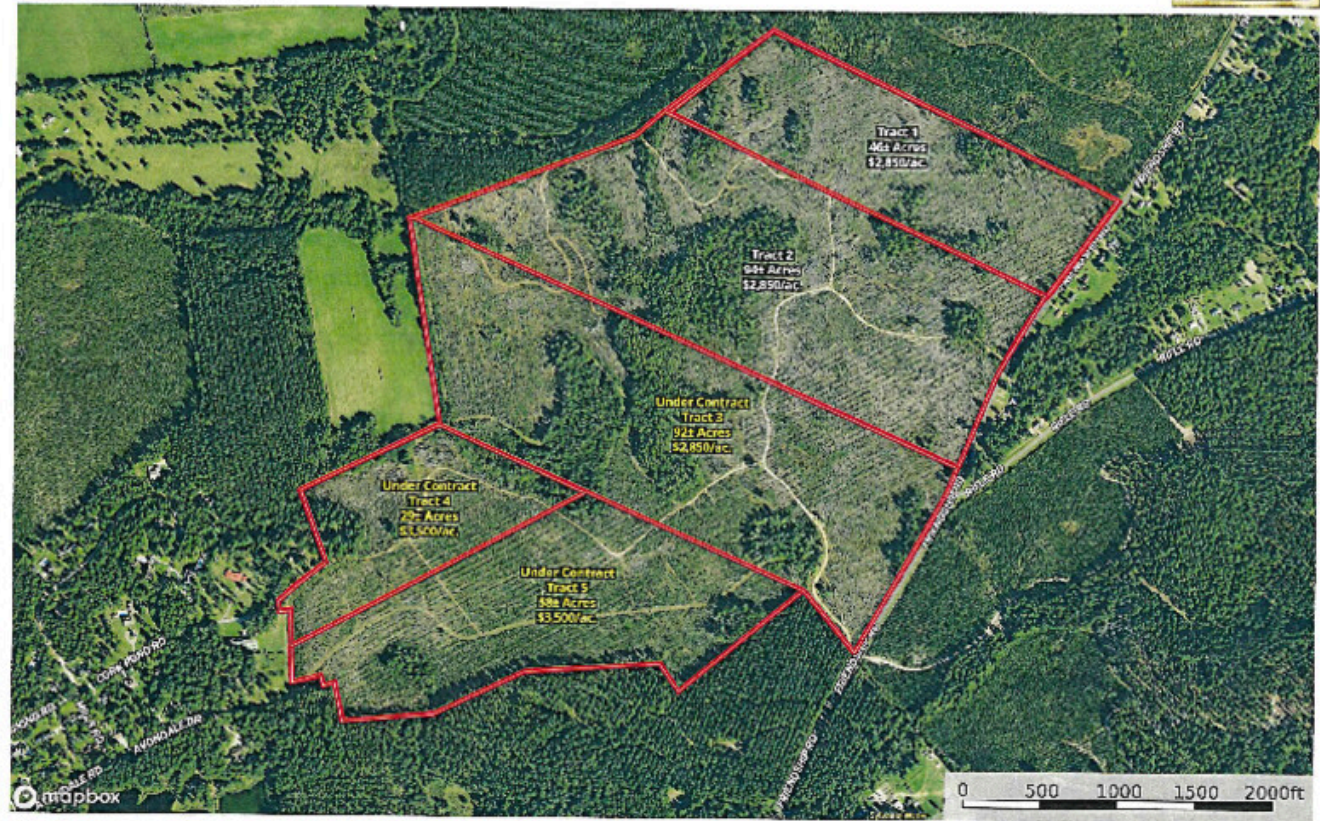


Topo Map

Friendship Pines - Tract 3

Published on Plantation Properties & Land Investments, LLC (<https://www.landanddrivers.com>)

319±/- acres Friendship Rd & Cork Pond Rd. - Divided
Scraper County, Georgia, AC 47-



Jaden Williams
P. 770-734-LANDISCOVER | 1-800-607-LAND | (606) 325-1111 | info@landanddrivers.com | [landanddrivers.com](https://www.landanddrivers.com)

M This is a preliminary map and should not be used for legal purposes. It is intended for informational purposes only. The information is provided as is, without warranty. The information is not intended to be used for legal purposes. The information is not intended to be used for legal purposes.

Source URL: <https://www.landanddrivers.com/property/friendship-pines-tract-3>