



## Greenhouse Homeplace

PRICE REDUCED!!! Greenhouse Homeplace is a 47± acre tract right outside of Metter on HWY 46. This property would make for a great future home site or weekend getaway with access from HWY 46 and Greenhouse Rd. The tract is made up of mostly volunteer pine trees with some hardwoods along the northwest edge of the property. Only an hour drive to Savannah and 20 minutes from Statesboro. Seller will divided into two separate tracts. Call today to schedule a viewing 912.764.5263(LAND)



**Price:** \$299,000

**Property Type:** Land

**Status:** Sold

**Street/Address:** E HWY 46

**City:** Metter

**State:** Georgia

**Zip code:** 30439

**County:** candler

**Acreage:** 47

**Per Acre Price:** \$6,300.00

**Phone Number:** 912.764.LAND(5263)

**Email:** [info@LandandRivers.com](mailto:info@LandandRivers.com)

**Google Maps link:** [View Larger Map](#)



## Aerial Map

47.5+/- acres on E. Hwy 46  
Candler County, Georgia, 47.5 AC +/-

PLANTATION PROPERTIES  
LAND INVESTMENTS LLC



Property

Jason Williams

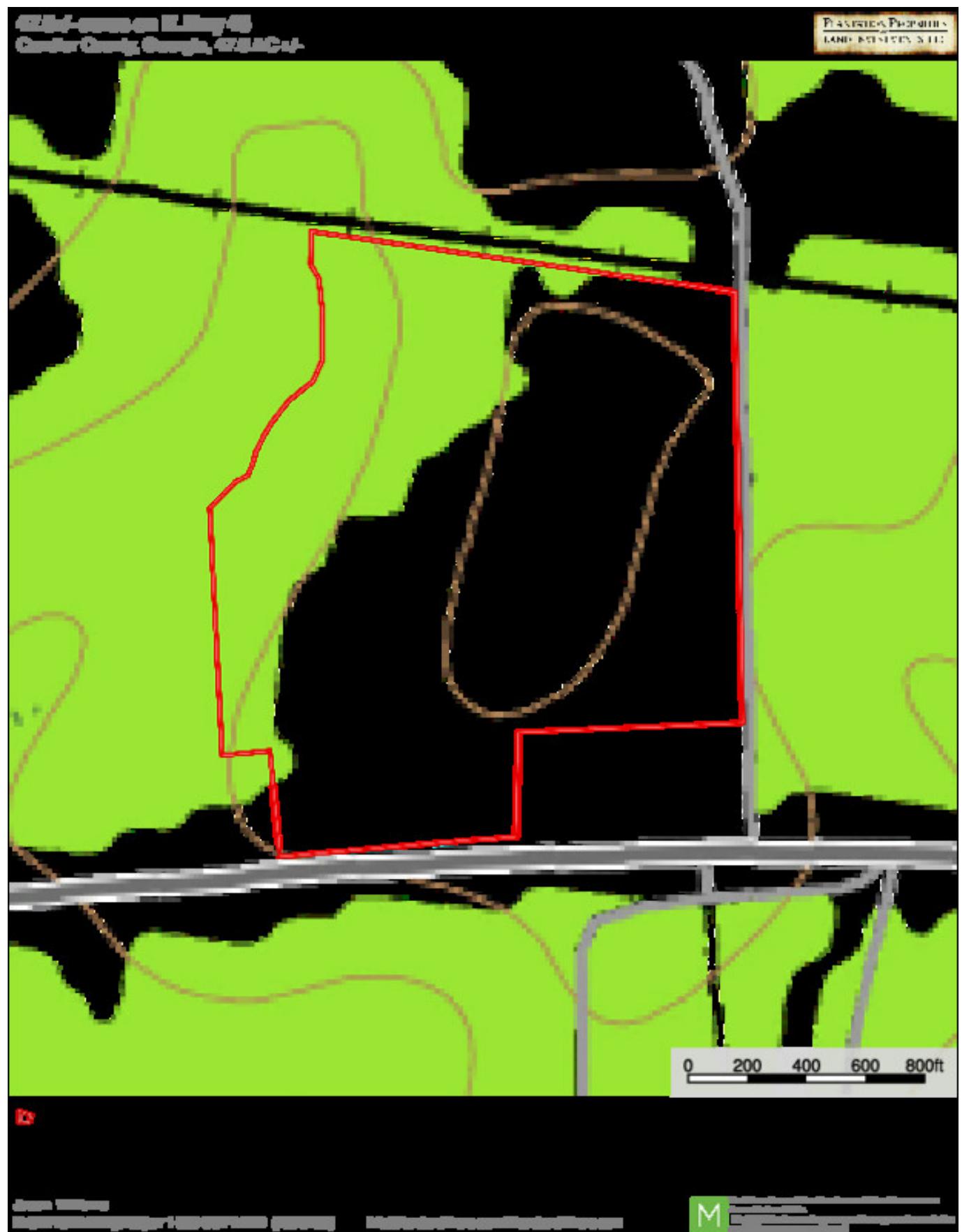
P: 912-794-1400 (T/F/S); or 1-833-807-LAND (188-5265)

[jwilliams@landanddrivers.com](mailto:jwilliams@landanddrivers.com) | [LandandDrivers.com](https://www.LandandDrivers.com)

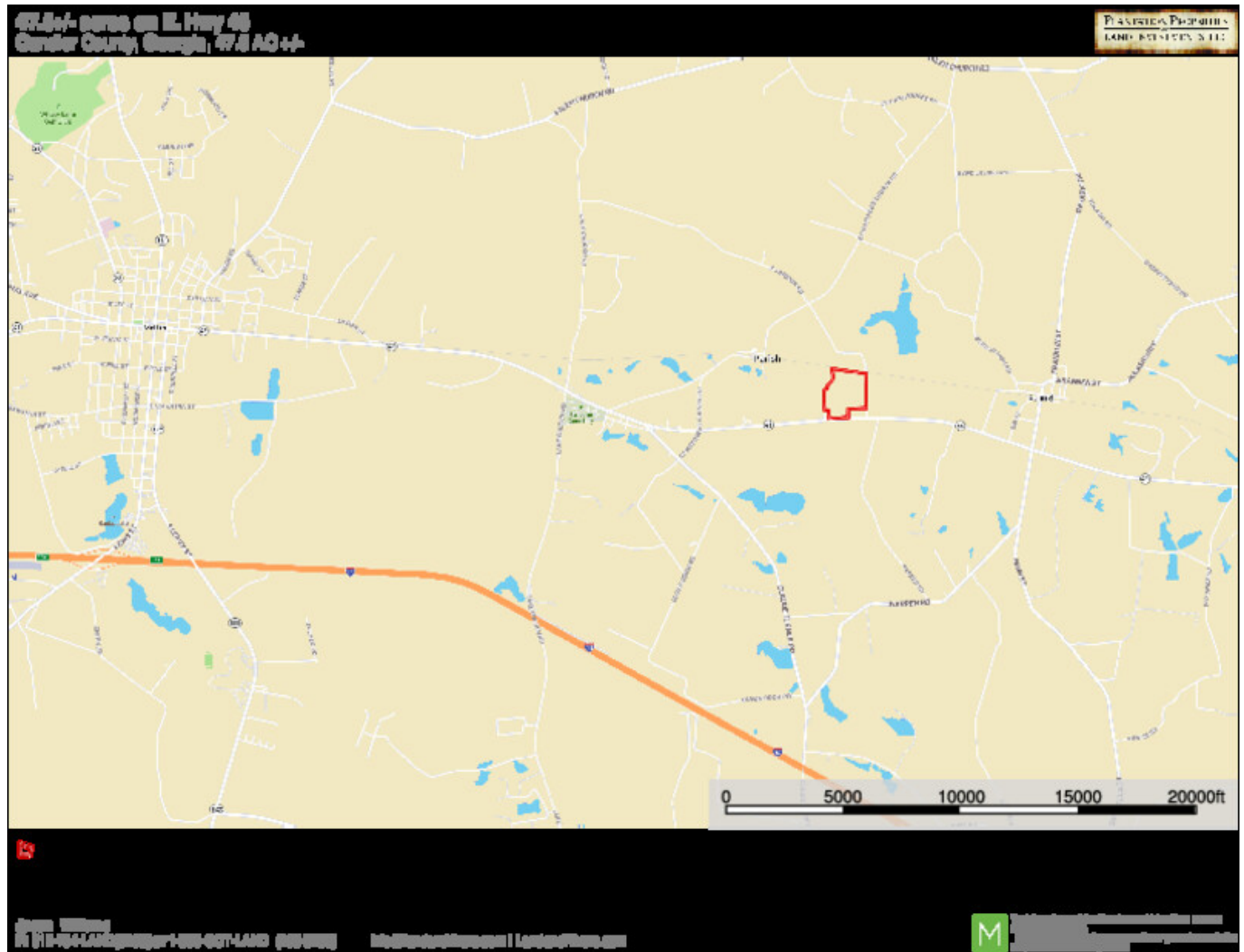


Member of the M&M Group, a subsidiary of M&M Group, Inc. (NYSE: M&M).  
M&M Group, Inc. is a publicly traded company with its headquarters in  
Candler, Georgia.

## Topo Map



## Location Map



**Source URL:** <https://www.landanddrivers.com/property/greenhouse-homeplace>