



Gibbons Tract

The Gibbons Tract is a 360± acre tract located in Jefferson County about 10 minutes outside of Louisville. The property consists of two cultivated fields totaling 55± acres, 55± acres of merchantable pine plantation, 159± acres of pine and hardwood mix, and 77± acres was previously harvested. This place is loaded with deer and turkey signs and is an excellent habitat for wildlife. It would make a great timber investment, recreational tract, homesite, weekend retreat or venture property. A MUST SEE!!! Call Jason Today! 912.764.LAND(5263)



Price: \$850,000

Property Type: Land

Status: Sold

Street/Address: Belmont Rd.

City: Louisville

State: Georgia

Zip code: 30434

County: jefferson

Acreage: 360

Per Acre Price: \$0.00

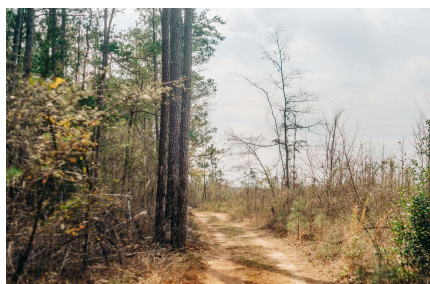
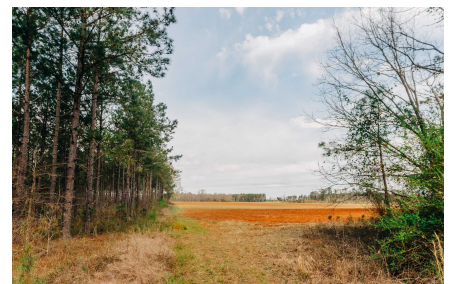
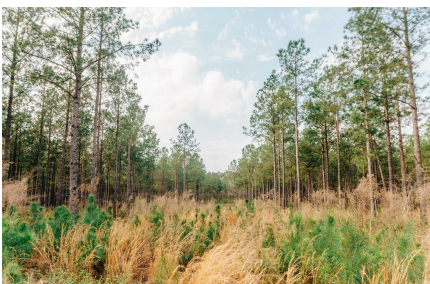
Phone Number: 912.764.LAND(5263)

Email: info@LandandRivers.com

Google Maps link: [View Larger Map](#)

Gibbons Tract

Published on Plantation Properties & Land Investments, LLC (<https://www.landanddrivers.com>)



Gibbons Tract

Published on Plantation Properties & Land Investments, LLC (<https://www.landandrivers.com>)



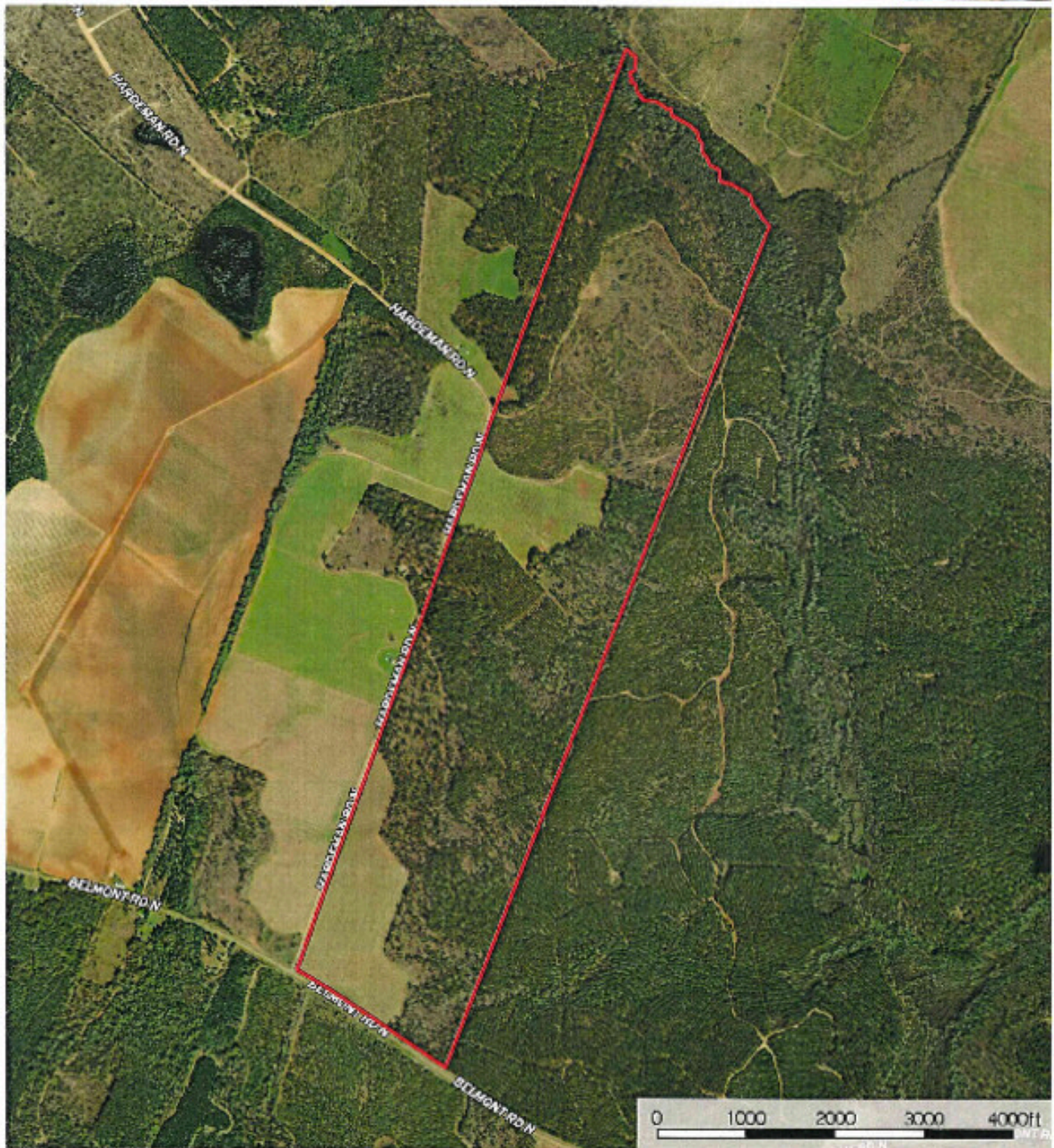
Aerial Map

Gibbons Tract

Published on Plantation Properties & Land Investments, LLC (<https://www.landanddrivers.com>)

360+/- acres on Belmont Rd.
Jefferson County, Georgia, AC 1/4

PLANTATION PROPERTIES
LAND INVESTMENTS, LLC



Boundaries

Jesse Williams
PHOTOGRAPHED BY LAND AND DRIVERS, LLC (404-575-1111)

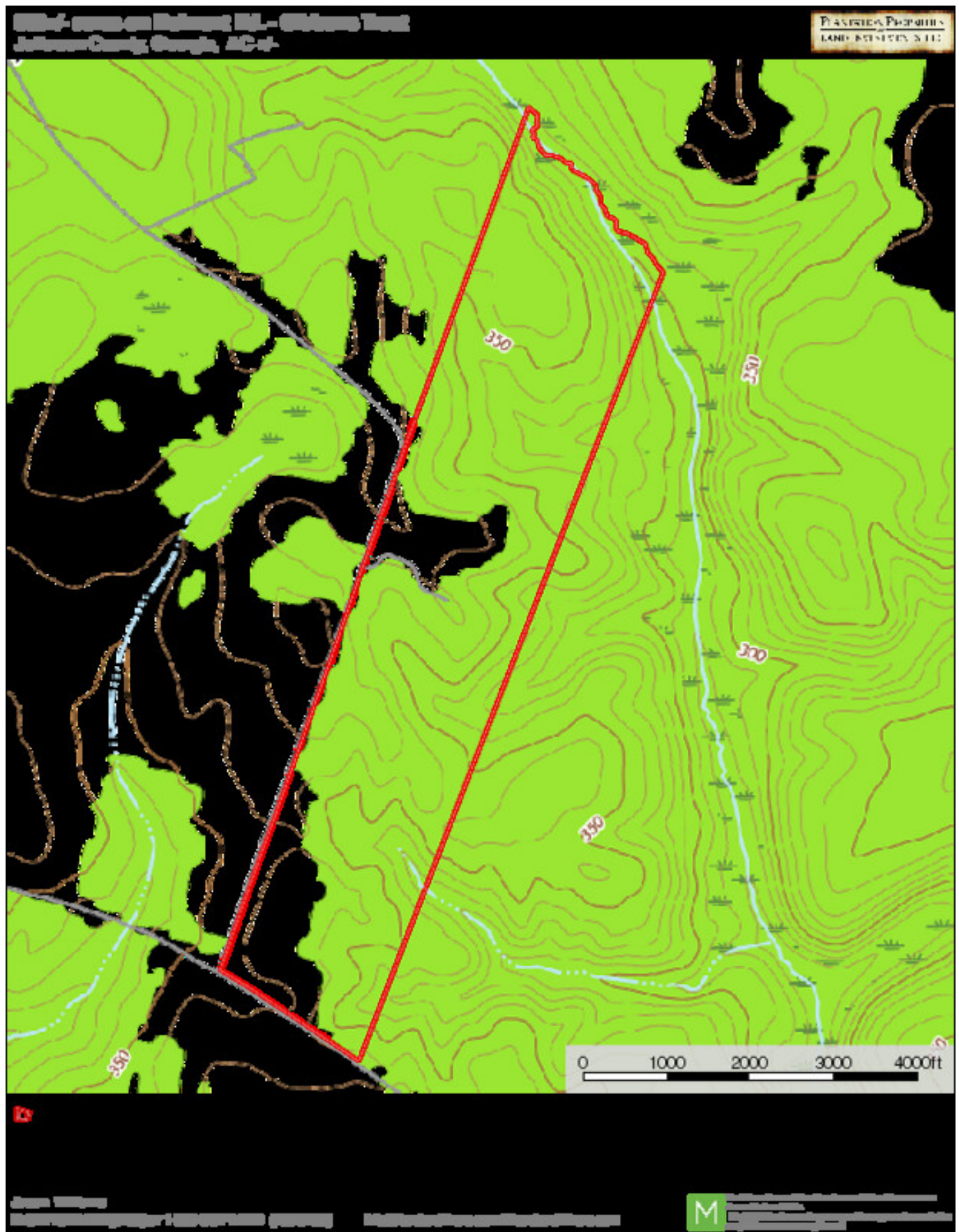
www.landanddrivers.com | [LandandDrivers.com](https://www.landanddrivers.com)

M is a professional business and real estate photography company. We provide high-quality aerial and ground-level photography for real estate, commercial, and residential properties. For more information, please contact us at www.landanddrivers.com.

Topo Map

Gibbons Tract

Published on Plantation Properties & Land Investments, LLC (<https://www.landanddrivers.com>)



Location Map

